

3月事業概況

(単位:千円, %)

| 項目 | 件数 | 金額 | 対前年比 |
|--------|--------|-------------|-------|
| 保証利用企業 | 13,551 | — | 99.4 |
| 保証申込 | 992 | 9,054,072 | 102.2 |
| 保証承諾 | 1,022 | 9,421,630 | 104.2 |
| 保証残高 | 27,652 | 200,369,683 | 94.0 |
| 代位弁済 | 39 | 413,995 | 90.9 |

資金使途別保証承諾状況

(単位:千円, %)

| | 3 月 中 | | | | 29 年 度 累 計 | | | |
|--------|-------|-----------|-------|-------|------------|------------|-------|-------|
| | 件数 | 金額 | 前年比 | 構成比 | 件数 | 金額 | 前年比 | 構成比 |
| 運転資金 | 635 | 6,301,078 | 100.1 | 66.9 | 4,841 | 50,251,974 | 100.8 | 67.7 |
| 設備資金 | 93 | 837,702 | 113.5 | 8.9 | 860 | 6,356,577 | 97.9 | 8.6 |
| 運転設備資金 | 294 | 2,282,850 | 113.5 | 24.2 | 2,408 | 17,570,550 | 101.6 | 23.7 |
| 合 計 | 1,022 | 9,421,630 | 104.2 | 100.0 | 8,109 | 74,179,101 | 100.7 | 100.0 |

期間別保証承諾状況

(単位:千円, %)

| | 3 月 中 | | | | 29 年 度 累 計 | | | |
|--------|-------|-----------|-------|-------|------------|------------|-------|-------|
| | 件数 | 金額 | 前年比 | 構成比 | 件数 | 金額 | 前年比 | 構成比 |
| 3か月以下 | 78 | 841,180 | 95.7 | 8.9 | 499 | 4,962,113 | 101.8 | 6.7 |
| 6か月以下 | 60 | 718,818 | 173.8 | 7.6 | 692 | 8,385,162 | 120.6 | 11.3 |
| 1か年以下 | 85 | 964,720 | 100.8 | 10.2 | 891 | 10,392,217 | 118.9 | 14.0 |
| 2か年以下 | 194 | 837,905 | 88.5 | 8.9 | 1,529 | 6,594,434 | 86.1 | 8.9 |
| 3か年以下 | 55 | 143,265 | 61.7 | 1.5 | 324 | 1,035,917 | 83.5 | 1.4 |
| 4か年以下 | 18 | 73,790 | 88.5 | 0.8 | 133 | 391,886 | 62.1 | 0.5 |
| 5か年以下 | 123 | 748,072 | 82.7 | 7.9 | 961 | 4,992,783 | 88.3 | 6.7 |
| 7か年以下 | 150 | 1,234,300 | 70.3 | 13.1 | 1,113 | 9,525,693 | 97.0 | 12.8 |
| 10か年以下 | 245 | 3,209,580 | 124.8 | 34.1 | 1,860 | 23,661,497 | 101.0 | 31.9 |
| 10か年超 | 14 | 650,000 | 217.9 | 6.9 | 107 | 4,237,400 | 91.3 | 5.7 |
| 合 計 | 1,022 | 9,421,630 | 104.2 | 100.0 | 8,109 | 74,179,101 | 100.7 | 100.0 |

金額別保証承諾状況

(単位:千円, %)

| | 3 月 中 | | | | 29 年 度 累 計 | | | |
|-----------|-------|-----------|-------|-------|------------|------------|-------|-------|
| | 件数 | 金額 | 前年比 | 構成比 | 件数 | 金額 | 前年比 | 構成比 |
| 100万円以下 | 202 | 152,486 | 127.8 | 1.6 | 1,259 | 941,789 | 100.0 | 1.3 |
| 200万円以下 | 109 | 195,700 | 90.9 | 2.1 | 994 | 1,762,519 | 100.6 | 2.4 |
| 300万円以下 | 117 | 337,489 | 97.4 | 3.6 | 1,051 | 3,026,820 | 84.6 | 4.1 |
| 500万円以下 | 130 | 585,513 | 80.4 | 6.2 | 1,214 | 5,503,759 | 99.7 | 7.4 |
| 1,000万円以下 | 180 | 1,504,542 | 88.0 | 16.0 | 1,623 | 13,635,935 | 98.9 | 18.4 |
| 1,500万円以下 | 91 | 1,219,780 | 112.5 | 12.9 | 587 | 7,898,438 | 85.9 | 10.6 |
| 2,000万円以下 | 113 | 2,197,235 | 137.2 | 23.3 | 721 | 13,949,673 | 111.5 | 18.8 |
| 3,000万円以下 | 42 | 1,172,800 | 70.0 | 12.4 | 330 | 9,074,386 | 91.7 | 12.2 |
| 5,000万円以下 | 28 | 1,173,085 | 139.5 | 12.5 | 225 | 9,540,480 | 105.6 | 12.9 |
| 6,000万円以下 | 1 | 60,000 | 26.8 | 0.6 | 25 | 1,459,861 | 66.8 | 2.0 |
| 7,000万円以下 | 1 | 65,000 | 51.2 | 0.7 | 12 | 812,000 | 87.9 | 1.1 |
| 8,000万円以下 | 3 | 240,000 | 105.3 | 2.5 | 30 | 2,372,500 | 169.8 | 3.2 |
| 1億円以下 | 4 | 371,000 | * | 3.9 | 28 | 2,724,940 | 158.2 | 3.7 |
| 1億2千万円以下 | 0 | 0 | * | * | 2 | 240,000 | 100.8 | 0.3 |
| 1億5千万円以下 | 1 | 147,000 | 102.1 | 1.6 | 6 | 836,000 | 212.8 | 1.1 |
| 2億円以下 | 0 | 0 | * | * | 2 | 400,000 | 71.4 | 0.5 |
| 合 計 | 1,022 | 9,421,630 | 104.2 | 100.0 | 8,109 | 74,179,101 | 100.7 | 100.0 |

新規・継続別保証承諾状況

(単位:千円, %)

| | 3 月 中 | | | | 29 年 度 累 計 | | | |
|-----|-------|-----------|-------|-------|------------|------------|-------|-------|
| | 件数 | 金額 | 前年比 | 構成比 | 件数 | 金額 | 前年比 | 構成比 |
| 新規 | 134 | 599,300 | 134.0 | 6.4 | 1,101 | 5,035,204 | 96.9 | 6.8 |
| 継続 | 888 | 8,822,330 | 102.7 | 93.6 | 7,008 | 69,143,897 | 101.0 | 93.2 |
| 合 計 | 1,022 | 9,421,630 | 104.2 | 100.0 | 8,109 | 74,179,101 | 100.7 | 100.0 |

金融機関別保証状況

(単位:千円,%)

| | 保証承諾 | | | | | | | | 3月末保債務残高 | | | | 代位弁済 (29年度累計) | | |
|-----------|-------|-----------|-------|-------|--------|------------|-------|-------|----------|-------------|------|-------|------------------|-----------|-------|
| | 3月中 | | | | 29年度累計 | | | | 件数 | 金額 | 前年比 | 構成比 | 件数 | 金額 | 前年比 |
| | 件数 | 金額 | 前年比 | 構成比 | 件数 | 金額 | 前年比 | 構成比 | | | | | | | |
| みずほ銀行 | 1 | 19,000 | 38.8 | 0.2 | 6 | 109,000 | 35.6 | 0.1 | 55 | 751,370 | 76.5 | 0.4 | 1 | 47,632 | * |
| 三菱東京UFJ銀行 | 0 | 0 | * | * | 4 | 170,000 | 170.0 | 0.2 | 37 | 568,927 | 83.0 | 0.3 | 2 | 15,551 | * |
| (都市銀行計) | 1 | 19,000 | 38.8 | 0.2 | 10 | 279,000 | 68.7 | 0.4 | 92 | 1,320,297 | 79.1 | 0.7 | 3 | 63,183 | * |
| 秋田銀行 | 449 | 3,732,295 | 78.9 | 39.6 | 3,362 | 29,004,979 | 89.5 | 39.1 | 12,326 | 90,229,050 | 92.0 | 45.0 | 182 | 1,508,267 | 86.7 |
| 北都銀行 | 390 | 4,366,954 | 169.3 | 46.4 | 2,815 | 32,361,878 | 114.1 | 43.6 | 8,748 | 73,658,609 | 97.0 | 36.8 | 114 | 782,941 | 65.3 |
| 荘内銀行 | 1 | 2,200 | 73.3 | 0.0 | 6 | 57,200 | 173.3 | 0.1 | 34 | 224,632 | 81.7 | 0.1 | 0 | 0 | * |
| 青森銀行 | 4 | 13,600 | 45.8 | 0.1 | 25 | 183,968 | 131.6 | 0.2 | 95 | 482,422 | 90.5 | 0.2 | 3 | 8,492 | * |
| 山形銀行 | 2 | 20,000 | 25.0 | 0.2 | 17 | 163,000 | 94.8 | 0.2 | 79 | 582,014 | 85.7 | 0.3 | 0 | 0 | * |
| 東北銀行 | 0 | 0 | * | * | 14 | 97,520 | 57.6 | 0.1 | 104 | 581,924 | 73.0 | 0.3 | 3 | 86,015 | 549.9 |
| 七十七銀行 | 2 | 15,000 | * | 0.2 | 4 | 26,000 | 200.0 | 0.0 | 13 | 77,388 | 66.3 | 0.0 | 4 | 22,414 | * |
| 岩手銀行 | 3 | 45,980 | 459.8 | 0.5 | 17 | 134,260 | 148.2 | 0.2 | 70 | 633,957 | 95.8 | 0.3 | 1 | 646 | * |
| みちのく銀行 | 4 | 32,290 | 53.8 | 0.3 | 38 | 274,050 | 103.6 | 0.4 | 170 | 1,099,359 | 83.3 | 0.5 | 1 | 1,354 | 80.4 |
| (地方銀行計) | 855 | 8,228,319 | 109.6 | 87.3 | 6,298 | 62,302,855 | 101.0 | 84.0 | 21,639 | 167,569,354 | 94.0 | 83.6 | 308 | 2,410,130 | 81.6 |
| 北日本銀行 | 11 | 79,300 | 99.1 | 0.8 | 67 | 571,701 | 83.0 | 0.8 | 223 | 1,558,663 | 74.6 | 0.8 | 6 | 55,652 | * |
| きらやか銀行 | 4 | 27,000 | 17.2 | 0.3 | 45 | 466,324 | 85.0 | 0.6 | 182 | 1,365,627 | 89.6 | 0.7 | 0 | 0 | * |
| (第二地方銀行計) | 15 | 106,300 | 44.9 | 1.1 | 112 | 1,038,025 | 83.9 | 1.4 | 405 | 2,924,290 | 81.0 | 1.5 | 6 | 55,652 | * |
| 秋田信用金庫 | 44 | 269,579 | 58.3 | 2.9 | 457 | 3,325,710 | 98.2 | 4.5 | 1,806 | 10,305,374 | 98.4 | 5.1 | 20 | 116,942 | 108.4 |
| 羽後信用金庫 | 63 | 317,120 | 78.5 | 3.4 | 830 | 4,063,593 | 96.4 | 5.5 | 2,264 | 9,363,784 | 94.8 | 4.7 | 47 | 473,895 | 205.3 |
| (信用金庫計) | 107 | 586,699 | 67.7 | 6.2 | 1,287 | 7,389,303 | 97.2 | 10.0 | 4,070 | 19,669,158 | 96.6 | 9.8 | 67 | 590,837 | 174.5 |
| 秋田県信用組合 | 39 | 367,720 | 119.5 | 3.9 | 382 | 2,806,630 | 108.3 | 3.8 | 1,333 | 7,279,227 | 98.7 | 3.6 | 35 | 194,487 | 62.6 |
| (信用組合計) | 39 | 367,720 | 119.5 | 3.9 | 382 | 2,806,630 | 108.3 | 3.8 | 1,333 | 7,279,227 | 98.7 | 3.6 | 35 | 194,487 | 62.6 |
| 商工組合中央金庫 | 5 | 113,592 | 156.9 | 1.2 | 20 | 363,289 | 243.4 | 0.5 | 112 | 1,427,376 | 91.6 | 0.7 | 0 | 0 | * |
| かづの農協 | 0 | 0 | * | * | 0 | 0 | * | * | 1 | 179,982 | 93.1 | 0.1 | 0 | 0 | * |
| (その他計) | 5 | 113,592 | 156.9 | 1.2 | 20 | 363,289 | 243.4 | 0.5 | 113 | 1,607,358 | 91.7 | 0.8 | 0 | 0 | * |
| 合計 | 1,022 | 9,421,630 | 104.2 | 100.0 | 8,109 | 74,179,101 | 100.7 | 100.0 | 27,652 | 200,369,683 | 94.0 | 100.0 | 419 | 3,314,289 | 92.0 |

業種別保証状況

(単位:千円,%)

| | 保証承諾 | | | | | | | | 3月末保証債務残高 | | | | 代位弁済 (29年度累計) | | |
|-------------|-------|-----------|---------|-------|--------|------------|-------|-------|-----------|-------------|-------|-------|------------------|-----------|-------|
| | 3月中 | | | | 29年度累計 | | | | 件数 | 金額 | 前年比 | 構成比 | 件数 | 金額 | 前年比 |
| | 件数 | 金額 | 前年比 | 構成比 | 件数 | 金額 | 前年比 | 構成比 | | | | | | | |
| 食料品工業 | 23 | 157,800 | 79.3 | 1.7 | 224 | 2,488,706 | 111.4 | 3.4 | 734 | 6,253,387 | 95.5 | 3.1 | 14 | 100,771 | 172.9 |
| 繊維品工業 | 18 | 170,000 | 151.2 | 1.8 | 137 | 1,157,320 | 123.7 | 1.6 | 390 | 2,651,119 | 105.1 | 1.3 | 4 | 11,289 | 18.5 |
| 木材・木製品工業 | 8 | 94,300 | 47.0 | 1.0 | 89 | 1,240,768 | 116.0 | 1.7 | 336 | 3,537,138 | 90.7 | 1.8 | 25 | 300,635 | 402.3 |
| 家具・建具工業 | 9 | 37,490 | 102.2 | 0.4 | 64 | 266,290 | 73.9 | 0.4 | 218 | 1,134,260 | 84.4 | 0.6 | 3 | 13,002 | 171.5 |
| 紙工業 | 0 | 0 | * | * | 6 | 73,180 | 105.8 | 0.1 | 28 | 318,899 | 98.0 | 0.2 | 0 | 0 | * |
| 製版・製本業 | 0 | 0 | * | * | 1 | 5,000 | 102.0 | 0.0 | 2 | 7,552 | 76.5 | 0.0 | 0 | 0 | * |
| 化学工業 | 0 | 0 | * | * | 1 | 3,000 | 50.0 | 0.0 | 5 | 56,850 | 75.0 | 0.0 | 0 | 0 | * |
| 石油石炭工業 | 0 | 0 | * | * | 1 | 20,000 | 166.7 | 0.0 | 11 | 244,517 | 91.3 | 0.1 | 0 | 0 | * |
| ゴム・プラスチック工業 | 1 | 20,000 | * | 0.2 | 14 | 125,300 | 72.2 | 0.2 | 60 | 496,704 | 91.6 | 0.2 | 0 | 0 | * |
| ゴム製品工業 | 0 | 0 | * | * | 1 | 9,000 | 112.5 | 0.0 | 6 | 18,105 | 112.4 | 0.0 | 0 | 0 | * |
| 皮革工業 | 1 | 20,000 | 133.3 | 0.2 | 28 | 277,116 | 199.6 | 0.4 | 59 | 464,458 | 96.6 | 0.2 | 0 | 0 | * |
| 窯業 | 5 | 56,000 | 112.9 | 0.6 | 22 | 222,500 | 65.9 | 0.3 | 108 | 953,765 | 86.7 | 0.5 | 0 | 0 | * |
| 機械工業 | 25 | 265,313 | 94.0 | 2.8 | 143 | 1,556,030 | 91.6 | 2.1 | 561 | 4,995,545 | 90.3 | 2.5 | 3 | 18,716 | 9.6 |
| 電気機器工業 | 2 | 33,000 | 507.7 | 0.4 | 52 | 995,019 | 113.2 | 1.3 | 223 | 2,691,777 | 91.2 | 1.3 | 0 | 0 | * |
| 車輛工業 | 0 | 0 | * | * | 10 | 245,200 | 360.6 | 0.3 | 45 | 562,014 | 103.5 | 0.3 | 0 | 0 | * |
| 船舶工業 | 0 | 0 | * | * | 1 | 4,000 | * | 0.0 | 6 | 8,185 | 77.2 | 0.0 | 0 | 0 | * |
| 金属工業 | 9 | 142,900 | 1,264.6 | 1.5 | 65 | 833,119 | 96.5 | 1.1 | 293 | 3,431,758 | 87.7 | 1.7 | 0 | 0 | * |
| ソフトウェア業 | 3 | 7,650 | 191.3 | 0.1 | 28 | 164,550 | 90.2 | 0.2 | 73 | 513,188 | 87.9 | 0.3 | 0 | 0 | * |
| 情報処理サービス業 | 0 | 0 | * | * | 3 | 19,889 | 331.5 | 0.0 | 6 | 24,477 | 112.2 | 0.0 | 0 | 0 | * |
| 農林漁業 | 1 | 2,400 | 10.3 | 0.0 | 5 | 33,900 | 88.7 | 0.0 | 50 | 245,276 | 90.7 | 0.1 | 1 | 6,095 | 15.4 |
| その他の工業 | 28 | 150,700 | 203.9 | 1.6 | 229 | 1,160,001 | 105.8 | 1.6 | 846 | 3,304,066 | 99.0 | 1.6 | 14 | 76,993 | 74.3 |
| 製造業計 | 133 | 1,157,553 | 114.1 | 12.3 | 1,124 | 10,899,888 | 107.1 | 14.7 | 4,060 | 31,913,040 | 93.0 | 15.9 | 64 | 527,500 | 87.3 |
| 鉱業 | 0 | 0 | * | * | 12 | 197,970 | 52.7 | 0.3 | 98 | 1,143,994 | 91.7 | 0.6 | 0 | 0 | * |
| 建設業 | 316 | 2,935,420 | 104.7 | 31.2 | 2,394 | 22,373,141 | 105.7 | 30.2 | 7,323 | 47,484,445 | 95.8 | 23.7 | 66 | 403,171 | 51.3 |
| 卸売業 | 70 | 831,395 | 84.4 | 8.8 | 554 | 7,541,818 | 89.2 | 10.2 | 1,979 | 19,360,723 | 89.6 | 9.7 | 67 | 802,423 | 254.4 |
| 小売業 | 236 | 1,637,026 | 106.2 | 17.4 | 1,962 | 13,466,914 | 96.8 | 18.2 | 6,698 | 35,638,722 | 93.6 | 17.8 | 160 | 1,166,763 | 120.1 |
| 運送倉庫業 | 27 | 353,061 | 108.6 | 3.7 | 186 | 2,444,003 | 93.5 | 3.3 | 874 | 8,311,165 | 89.2 | 4.1 | 9 | 58,449 | 537.5 |
| サービス業 | 175 | 1,514,990 | 107.8 | 16.1 | 1,328 | 11,346,460 | 107.0 | 15.3 | 4,580 | 34,625,699 | 94.4 | 17.3 | 49 | 325,202 | 39.7 |
| 不動産業 | 41 | 698,300 | 112.0 | 7.4 | 364 | 4,139,428 | 98.7 | 5.6 | 1,346 | 12,798,993 | 100.8 | 6.4 | 4 | 30,780 | 310.9 |
| その他 | 24 | 293,885 | 160.6 | 3.1 | 185 | 1,769,480 | 82.8 | 2.4 | 694 | 9,092,902 | 94.4 | 4.5 | 0 | 0 | * |
| 非製造業計 | 889 | 8,264,077 | 102.9 | 87.7 | 6,985 | 63,279,213 | 99.7 | 85.3 | 23,592 | 168,456,643 | 94.2 | 84.1 | 355 | 2,786,789 | 92.9 |
| 合計 | 1,022 | 9,421,630 | 104.2 | 100.0 | 8,109 | 74,179,101 | 100.7 | 100.0 | 27,652 | 200,369,683 | 94.0 | 100.0 | 419 | 3,314,289 | 92.0 |

市町村別保証状況

(単位:千円,%)

| | 保証承諾 | | | | | | | | 3月末保証債務残高 | | | | 代位弁済 (29年度累計) | | |
|-------|-------|-----------|-------|-------|--------|------------|-------|-------|-----------|-------------|-------|-------|------------------|-----------|-------|
| | 3月中 | | | | 29年度累計 | | | | 件数 | 金額 | 前年比 | 構成比 | 件数 | 金額 | 前年比 |
| | 件数 | 金額 | 前年比 | 構成比 | 件数 | 金額 | 前年比 | 構成比 | | | | | | | |
| 秋田市 | 283 | 2,830,982 | 102.5 | 30.0 | 2,261 | 22,638,573 | 97.2 | 30.5 | 8,408 | 64,944,409 | 92.9 | 32.4 | 117 | 622,089 | 73.0 |
| 能代市 | 58 | 417,700 | 96.0 | 4.4 | 455 | 3,445,082 | 83.7 | 4.6 | 1,638 | 10,675,294 | 90.9 | 5.3 | 45 | 545,921 | 152.9 |
| 横手市 | 158 | 1,407,780 | 153.7 | 14.9 | 1,048 | 9,146,154 | 109.6 | 12.3 | 2,725 | 20,405,752 | 98.9 | 10.2 | 35 | 308,162 | 70.6 |
| 大館市 | 63 | 707,313 | 89.2 | 7.5 | 596 | 5,789,453 | 99.6 | 7.8 | 2,002 | 14,153,445 | 93.8 | 7.1 | 35 | 200,167 | 76.3 |
| 北秋田市 | 22 | 255,600 | 171.9 | 2.7 | 223 | 2,343,030 | 132.6 | 3.2 | 671 | 4,716,282 | 105.2 | 2.4 | 10 | 67,454 | 36.7 |
| 由利本荘市 | 52 | 342,190 | 57.0 | 3.6 | 571 | 3,747,074 | 99.8 | 5.1 | 2,034 | 10,534,102 | 88.9 | 5.3 | 33 | 227,513 | 351.2 |
| にかほ市 | 27 | 265,300 | 66.0 | 2.8 | 283 | 2,239,944 | 76.4 | 3.0 | 1,035 | 7,789,519 | 92.0 | 3.9 | 10 | 25,632 | 9.8 |
| 男鹿市 | 24 | 160,380 | 121.5 | 1.7 | 176 | 1,831,076 | 93.8 | 2.5 | 727 | 6,070,164 | 100.0 | 3.0 | 2 | 792 | 1.7 |
| 潟上市 | 27 | 382,160 | 108.5 | 4.1 | 226 | 2,240,342 | 99.3 | 3.0 | 818 | 5,983,663 | 101.6 | 3.0 | 3 | 6,097 | 5.4 |
| 湯沢市 | 69 | 708,775 | 151.5 | 7.5 | 442 | 4,181,028 | 116.7 | 5.6 | 1,273 | 9,642,324 | 91.6 | 4.8 | 30 | 395,899 | 474.6 |
| 大仙市 | 83 | 812,500 | 88.6 | 8.6 | 653 | 5,966,947 | 101.1 | 8.0 | 2,239 | 16,661,489 | 91.7 | 8.3 | 23 | 264,845 | 243.7 |
| 仙北市 | 32 | 331,760 | 93.9 | 3.5 | 257 | 2,678,486 | 123.0 | 3.6 | 847 | 6,193,885 | 98.4 | 3.1 | 24 | 138,099 | 42.3 |
| 鹿角市 | 30 | 152,650 | 102.8 | 1.6 | 223 | 1,924,819 | 95.2 | 2.6 | 971 | 6,824,015 | 89.9 | 3.4 | 25 | 264,555 | 117.0 |
| 13市計 | 928 | 8,775,090 | 104.1 | 93.1 | 7,414 | 68,172,007 | 100.4 | 91.9 | 25,388 | 184,594,344 | 93.8 | 92.1 | 392 | 3,067,225 | 92.4 |
| 小坂町 | 6 | 30,290 | 25.1 | 0.3 | 22 | 125,390 | 54.7 | 0.2 | 100 | 873,225 | 90.7 | 0.4 | 0 | 0 | * |
| 鹿角郡計 | 6 | 30,290 | 25.1 | 0.3 | 22 | 125,390 | 54.7 | 0.2 | 100 | 873,225 | 90.7 | 0.4 | 0 | 0 | * |
| 上小阿仁村 | 4 | 25,000 | 133.0 | 0.3 | 15 | 90,300 | 89.2 | 0.1 | 56 | 418,598 | 94.2 | 0.2 | 0 | 0 | * |
| 北秋田郡計 | 4 | 25,000 | 133.0 | 0.3 | 15 | 90,300 | 89.2 | 0.1 | 56 | 418,598 | 94.2 | 0.2 | 0 | 0 | * |
| 藤里町 | 4 | 38,000 | 100.0 | 0.4 | 28 | 148,700 | 78.9 | 0.2 | 85 | 391,034 | 105.9 | 0.2 | 0 | 0 | * |
| 三種町 | 26 | 146,000 | 135.6 | 1.5 | 134 | 1,107,370 | 90.8 | 1.5 | 452 | 3,000,472 | 96.0 | 1.5 | 3 | 16,703 | 153.6 |
| 八峰町 | 3 | 27,500 | 220.0 | 0.3 | 41 | 330,350 | 218.6 | 0.4 | 157 | 802,567 | 92.8 | 0.4 | 6 | 23,287 | 250.6 |
| 山本郡計 | 33 | 211,500 | 133.7 | 2.2 | 203 | 1,586,420 | 101.7 | 2.1 | 694 | 4,194,073 | 96.2 | 2.1 | 9 | 39,990 | 198.3 |
| 五城目町 | 9 | 26,200 | 188.7 | 0.3 | 79 | 510,090 | 136.0 | 0.7 | 238 | 1,704,578 | 96.3 | 0.9 | 2 | 1,489 | 20.4 |
| 八郎潟町 | 1 | 7,300 | 37.6 | 0.1 | 33 | 138,244 | 67.7 | 0.2 | 132 | 632,609 | 86.9 | 0.3 | 1 | 9,330 | 62.0 |
| 井川町 | 4 | 12,950 | 161.9 | 0.1 | 35 | 275,750 | 219.7 | 0.4 | 96 | 541,586 | 114.1 | 0.3 | 5 | 45,717 | 941.6 |
| 大潟村 | 1 | 2,000 | 40.0 | 0.0 | 17 | 503,500 | 83.6 | 0.7 | 32 | 530,621 | 72.5 | 0.3 | 0 | 0 | * |
| 南秋田郡計 | 15 | 48,450 | 104.7 | 0.5 | 164 | 1,427,584 | 109.3 | 1.9 | 498 | 3,409,395 | 92.1 | 1.7 | 8 | 56,536 | 207.9 |
| 美郷町 | 19 | 158,100 | 70.7 | 1.7 | 145 | 1,053,550 | 83.5 | 1.4 | 437 | 2,774,697 | 102.6 | 1.4 | 1 | 805 | 2.8 |
| 仙北郡計 | 19 | 158,100 | 70.7 | 1.7 | 145 | 1,053,550 | 83.5 | 1.4 | 437 | 2,774,697 | 102.6 | 1.4 | 1 | 805 | 2.8 |
| 羽後町 | 10 | 67,000 | 446.7 | 0.7 | 94 | 825,890 | 148.7 | 1.1 | 281 | 1,495,849 | 99.3 | 0.7 | 4 | 12,532 | * |
| 東成瀬村 | 4 | 26,200 | 162.7 | 0.3 | 22 | 189,200 | 81.7 | 0.3 | 61 | 418,144 | 95.1 | 0.2 | 0 | 0 | * |
| 雄勝郡計 | 14 | 93,200 | 299.7 | 1.0 | 116 | 1,015,090 | 129.0 | 1.4 | 342 | 1,913,993 | 98.3 | 1.0 | 4 | 12,532 | * |
| 県外 | 3 | 80,000 | 533.3 | 0.8 | 30 | 708,760 | 146.8 | 1.0 | 137 | 2,191,359 | 96.3 | 1.1 | 5 | 137,201 | 65.9 |
| 合計 | 1,022 | 9,421,630 | 104.2 | 100.0 | 8,109 | 74,179,101 | 100.7 | 100.0 | 27,652 | 200,369,683 | 94.0 | 100.0 | 419 | 3,314,289 | 92.0 |

事業部・支所別状況

(単位:千円,%)

| | 保証承諾 | | | | | | | | 3月末保証債務残高 | | | | 代位弁済 (29年度累計) | | |
|--------|-------|-----------|-------|-------|--------|------------|-------|-------|-----------|-------------|------|-------|------------------|-----------|-------|
| | 3月中 | | | | 29年度累計 | | | | 件数 | 金額 | 前年比 | 構成比 | 件数 | 金額 | 前年比 |
| | 件数 | 金額 | 前年比 | 構成比 | 件数 | 金額 | 前年比 | 構成比 | | | | | | | |
| 秋田事業部 | 349 | 3,420,172 | 102.9 | 36.3 | 2,832 | 28,229,365 | 97.7 | 38.1 | 10,453 | 80,561,751 | 94.4 | 40.2 | 133 | 693,598 | 60.3 |
| 大館支所 | 127 | 1,230,853 | 104.4 | 13.1 | 1,086 | 10,391,792 | 105.0 | 14.0 | 3,828 | 27,439,023 | 94.8 | 13.7 | 71 | 532,856 | 80.5 |
| 能代支所 | 90 | 626,200 | 108.1 | 6.6 | 657 | 5,099,702 | 88.9 | 6.9 | 2,355 | 15,282,108 | 91.3 | 7.6 | 52 | 583,842 | 159.4 |
| 本荘支所 | 78 | 605,990 | 59.7 | 6.4 | 849 | 6,047,518 | 89.9 | 8.2 | 3,075 | 18,450,680 | 90.4 | 9.2 | 43 | 253,145 | 49.9 |
| 大曲支所 | 132 | 1,300,960 | 85.1 | 13.8 | 1,048 | 9,735,803 | 101.2 | 13.1 | 3,537 | 26,176,682 | 93.1 | 13.1 | 48 | 403,749 | 107.3 |
| 横手湯沢支所 | 246 | 2,237,455 | 158.1 | 23.7 | 1,637 | 14,674,922 | 114.9 | 19.8 | 4,404 | 32,459,439 | 96.7 | 16.2 | 72 | 847,098 | 156.7 |
| 合計 | 1,022 | 9,421,630 | 104.2 | 100.0 | 8,109 | 74,179,101 | 100.7 | 100.0 | 27,652 | 200,369,683 | 94.0 | 100.0 | 419 | 3,314,289 | 92.0 |

制度別保証状況

(単位:千円,%)

| | 保証承諾 | | | | | | | | 3月末保証債務残高 | | | | 代位弁済 (29年度累計) | | |
|---------------|-------|-----------|-------|-------|--------|------------|-------|-------|-----------|-------------|-------|-------|------------------|-----------|----------|
| | 3月中 | | | | 29年度累計 | | | | 件数 | 金額 | 前年比 | 構成比 | 件数 | 金額 | 前年比 |
| | 件数 | 金額 | 前年比 | 構成比 | 件数 | 金額 | 前年比 | 構成比 | | | | | | | |
| 普通保証 | 43 | 1,333,692 | 183.9 | 14.2 | 261 | 8,769,695 | 141.6 | 11.8 | 693 | 16,288,198 | 116.7 | 8.1 | 12 | 131,881 | 36.1 |
| 継続短期 | 24 | 418,000 | * | 4.4 | 190 | 2,292,300 | * | 3.1 | 161 | 1,897,800 | * | 0.9 | 0 | 0 | * |
| 長期安定 | 0 | 0 | * | * | 0 | 0 | * | * | 8 | 134,611 | 88.3 | 0.1 | 0 | 0 | * |
| 長期資金 | 0 | 0 | * | * | 0 | 0 | * | * | 12 | 425,601 | 79.4 | 0.2 | 0 | 0 | * |
| 当座貸越 | 16 | 347,000 | 71.1 | 3.7 | 124 | 2,968,000 | 84.2 | 4.0 | 220 | 5,370,958 | 91.7 | 2.7 | 2 | 60,916 | 412.9 |
| カードローン | 50 | 331,500 | 94.0 | 3.5 | 421 | 2,795,500 | 118.0 | 3.8 | 737 | 4,559,198 | 100.5 | 2.3 | 2 | 7,850 | * |
| カードmini | 119 | 152,800 | 81.9 | 1.6 | 1,032 | 1,498,250 | 66.2 | 2.0 | 2,222 | 3,501,929 | 104.2 | 1.7 | 21 | 33,314 | 115.2 |
| 流動資産(根保証) | 1 | 5,520 | 7.9 | 0.1 | 15 | 439,920 | 105.6 | 0.6 | 15 | 439,920 | 116.8 | 0.2 | 0 | 0 | * |
| 特定社債 | 1 | 80,000 | * | 0.8 | 2 | 104,000 | * | 0.1 | 9 | 421,600 | 66.3 | 0.2 | 0 | 0 | * |
| 秋田銀行提携保証 | 3 | 13,500 | 6.2 | 0.1 | 38 | 449,890 | 37.0 | 0.6 | 192 | 1,876,013 | 87.2 | 0.9 | 2 | 11,974 | 15,964.8 |
| Bizこまち | 1 | 2,000 | * | 0.0 | 9 | 43,500 | 73.1 | 0.1 | 62 | 169,692 | 111.5 | 0.1 | 0 | 0 | * |
| 北都銀行提携保証 | 78 | 988,900 | 232.8 | 10.5 | 398 | 6,058,970 | 127.3 | 8.2 | 773 | 7,920,865 | 110.0 | 4.0 | 2 | 9,337 | 43.8 |
| ほくと創業 | 4 | 13,300 | 81.6 | 0.1 | 17 | 60,300 | 59.4 | 0.1 | 63 | 196,181 | 107.6 | 0.1 | 2 | 3,446 | 94.3 |
| 秋田信金提携保証 | 0 | 0 | * | * | 0 | 0 | * | * | 10 | 13,778 | 66.9 | 0.0 | 0 | 0 | * |
| あきしん創業 | 0 | 0 | * | * | 7 | 24,100 | 65.1 | 0.0 | 21 | 68,552 | 129.2 | 0.0 | 0 | 0 | * |
| 羽後信金提携保証 | 6 | 14,800 | 925.0 | 0.2 | 40 | 83,900 | 124.9 | 0.1 | 38 | 62,819 | 115.3 | 0.0 | 2 | 3,781 | * |
| 信銀提携保証 | 0 | 0 | * | * | 4 | 23,000 | 115.0 | 0.0 | 25 | 52,530 | 77.9 | 0.0 | 1 | 5,142 | 265.4 |
| 順風満帆 | 5 | 278,000 | 279.4 | 3.0 | 35 | 1,944,400 | 135.5 | 2.6 | 71 | 3,950,663 | 157.8 | 2.0 | 0 | 0 | * |
| その他 | 0 | 0 | * | * | 0 | 0 | * | * | 6 | 35,026 | 44.2 | 0.0 | 0 | 0 | * |
| 協会制度計 | 308 | 2,645,320 | 141.2 | 28.1 | 2,332 | 18,786,030 | 115.2 | 25.3 | 4,645 | 31,097,736 | 111.4 | 15.5 | 34 | 135,759 | 76.6 |
| 国経営安定 | 1 | 50,000 | * | 0.5 | 4 | 203,544 | 290.8 | 0.3 | 77 | 1,165,296 | 99.3 | 0.6 | 7 | 32,055 | 66.1 |
| 金融安定化(金融変化対応) | 0 | 0 | * | * | 0 | 0 | * | * | 1 | 1,852 | 22.5 | 0.0 | 1 | 6,021 | * |
| 経営革新関連 | 0 | 0 | * | * | 0 | 0 | * | * | 2 | 40,536 | 91.1 | 0.0 | 0 | 0 | * |
| 安定化(借換) | 0 | 0 | * | * | 0 | 0 | * | * | 5 | 63,295 | 92.5 | 0.0 | 0 | 0 | * |
| 全国緊急 | 0 | 0 | * | * | 0 | 0 | * | * | 17 | 274,841 | 87.7 | 0.1 | 1 | 3,648 | 48.0 |
| 震災緊急 | 0 | 0 | * | * | 0 | 0 | * | * | 3 | 50,846 | 86.0 | 0.0 | 0 | 0 | * |
| 経営力強化 | 0 | 0 | * | * | 6 | 171,879 | 61.8 | 0.2 | 33 | 908,288 | 108.1 | 0.5 | 0 | 0 | * |
| 経保GL保証 | 0 | 0 | * | * | 0 | 0 | * | * | 0 | 0 | * | * | 0 | 0 | * |
| 経改サポート | 0 | 0 | * | * | 3 | 7,746 | 2.5 | 0.0 | 17 | 278,970 | 95.5 | 0.1 | 0 | 0 | * |
| 経営力向上 | 0 | 0 | * | * | 0 | 0 | * | * | 0 | 0 | * | * | 0 | 0 | * |
| 地域経済牽引 | 0 | 0 | * | * | 0 | 0 | * | * | 0 | 0 | * | * | 0 | 0 | * |
| その他 | 0 | 0 | * | * | 0 | 0 | * | * | 3 | 5,421 | 74.6 | 0.0 | 0 | 0 | * |
| 国制度計 | 1 | 50,000 | 66.5 | 0.5 | 13 | 383,169 | 58.6 | 0.5 | 158 | 2,789,345 | 99.2 | 1.4 | 9 | 41,724 | 66.1 |
| 振興資金(固定) | 17 | 205,000 | 64.3 | 2.2 | 199 | 1,883,877 | 61.9 | 2.5 | 317 | 2,267,306 | 75.9 | 1.1 | 8 | 66,623 | 47.6 |
| 振興資金(変動) | 76 | 975,501 | 95.3 | 10.4 | 668 | 9,571,216 | 97.5 | 12.9 | 2,512 | 28,530,180 | 93.0 | 14.2 | 52 | 482,486 | 127.8 |
| 振興資金(小規模) | 1 | 8,000 | 266.7 | 0.1 | 4 | 16,500 | 39.4 | 0.0 | 27 | 87,940 | 71.7 | 0.0 | 1 | 4,539 | * |
| 振興資金(23年地震) | 0 | 0 | * | * | 0 | 0 | * | * | 2,487 | 12,944,377 | 69.2 | 6.5 | 56 | 410,445 | 84.9 |
| 災害復旧 | 0 | 0 | * | * | 0 | 0 | * | * | 14 | 38,044 | 60.3 | 0.0 | 0 | 0 | * |
| 県ABL(個別保証) | 0 | 0 | * | * | 1 | 26,400 | 42.0 | 0.0 | 1 | 26,400 | * | 0.0 | 0 | 0 | * |
| 県ABL(根保証) | 3 | 45,600 | 61.3 | 0.5 | 30 | 446,000 | 104.3 | 0.6 | 29 | 430,000 | 103.5 | 0.2 | 1 | 15,863 | * |
| 経営安定受注減 | 15 | 157,880 | 44.6 | 1.7 | 159 | 2,528,611 | 72.7 | 3.4 | 617 | 7,672,775 | 96.3 | 3.8 | 15 | 209,706 | 139.2 |
| 経営安定原油対策 | 0 | 0 | * | * | 0 | 0 | * | * | 2 | 22,960 | 28.4 | 0.0 | 1 | 1,716 | * |
| 原油価格対策 | 0 | 0 | * | * | 0 | 0 | * | * | 410 | 1,308,165 | 54.6 | 0.7 | 9 | 73,734 | 76.2 |
| 県緊急対策 | 0 | 0 | * | * | 0 | 0 | * | * | 3,510 | 26,617,278 | 68.1 | 13.3 | 72 | 970,357 | 101.6 |
| 県取引安定 | 0 | 0 | * | * | 0 | 0 | * | * | 1 | 3,560 | 71.9 | 0.0 | 0 | 0 | * |
| 受注減小口 | 17 | 60,769 | 63.1 | 0.6 | 157 | 681,536 | 81.9 | 0.9 | 464 | 1,658,232 | 89.6 | 0.8 | 23 | 112,734 | 134.8 |
| 経営安定連倒 | 0 | 0 | * | * | 1 | 6,500 | * | 0.0 | 8 | 28,860 | 55.9 | 0.0 | 0 | 0 | * |
| 連倒小口 | 0 | 0 | * | * | 0 | 0 | * | * | 2 | 6,185 | 92.6 | 0.0 | 0 | 0 | * |
| 経営安定再生 | 0 | 0 | * | * | 0 | 0 | * | * | 87 | 1,014,136 | 75.7 | 0.5 | 2 | 30,774 | 53.9 |
| 経営安定電気 | 0 | 0 | * | * | 0 | 0 | * | * | 2 | 17,249 | 85.2 | 0.0 | 0 | 0 | * |
| 経営安定消費税 | 0 | 0 | * | * | 0 | 0 | * | * | 33 | 288,569 | 76.1 | 0.1 | 0 | 0 | * |
| 経営安定消費増 | 2 | 50,000 | 42.0 | 0.5 | 26 | 889,000 | 90.0 | 1.2 | 16 | 267,739 | 88.4 | 0.1 | 0 | 0 | * |
| 経営安定借換 | 9 | 171,100 | 175.2 | 1.8 | 75 | 1,488,620 | 89.4 | 2.0 | 248 | 3,983,330 | 127.4 | 2.0 | 5 | 56,633 | 258.3 |
| 経営安定借換 | 0 | 0 | * | * | 11 | 120,859 | 122.8 | 0.2 | 37 | 487,316 | 104.4 | 0.2 | 0 | 0 | * |
| 県創業支援 | 6 | 40,600 | 149.3 | 0.4 | 58 | 222,580 | 94.2 | 0.3 | 328 | 802,131 | 82.4 | 0.4 | 11 | 19,770 | 30.7 |
| 新事業事業革新 | 0 | 0 | * | * | 2 | 30,000 | 47.2 | 0.0 | 67 | 1,039,952 | 82.2 | 0.5 | 3 | 74,750 | 80.7 |
| 県支援創業関連 | 0 | 0 | * | * | 2 | 5,500 | * | 0.0 | 2 | 5,056 | * | 0.0 | 0 | 0 | * |
| 新事業総合あきた | 0 | 0 | * | * | 0 | 0 | * | * | 2 | 3,044 | 18.1 | 0.0 | 0 | 0 | * |
| 新事業フェニックス | 0 | 0 | * | * | 0 | 0 | * | * | 3 | 196,313 | 86.3 | 0.1 | 0 | 0 | * |
| 再起支援資金 | 0 | 0 | * | * | 0 | 0 | * | * | 2 | 2,790 | 78.7 | 0.0 | 0 | 0 | * |
| 事業承継資金 | 0 | 0 | * | * | 3 | 28,500 | 34.3 | 0.0 | 32 | 270,718 | 74.6 | 0.1 | 1 | 3,401 | * |
| 県小口 | 6 | 15,000 | 65.5 | 0.2 | 36 | 77,810 | 88.3 | 0.1 | 117 | 221,666 | 101.8 | 0.1 | 0 | 0 | * |
| 県アグリ | 1 | 2,400 | 75.0 | 0.0 | 3 | 30,400 | 422.2 | 0.0 | 35 | 155,996 | 89.2 | 0.1 | 1 | 6,095 | 83.3 |
| エネルギー設備 | 2 | 18,000 | * | 0.2 | 10 | 124,800 | 18.9 | 0.2 | 57 | 3,806,752 | 95.3 | 1.9 | 0 | 0 | * |
| エネルギー支援 | 0 | 0 | * | * | 0 | 0 | * | * | 19 | 951,325 | 91.5 | 0.5 | 0 | 0 | * |
| 29大雨 | 0 | 0 | * | * | 31 | 333,880 | * | 0.5 | 31 | 313,322 | * | 0.2 | 0 | 0 | * |
| 国制度計 | 155 | 1,749,850 | 81.3 | 18.6 | 1,476 | 18,512,589 | 85.2 | 25.0 | 11,519 | 95,469,664 | 80.7 | 47.6 | 261 | 2,539,527 | 99.9 |
| 市町村制度計 | 515 | 3,642,768 | 86.4 | 38.7 | 4,027 | 27,727,618 | 96.4 | 37.4 | 10,637 | 54,724,740 | 109.2 | 27.3 | 103 | 465,399 | 101.8 |
| 合計 | 1,022 | 9,421,630 | 104.2 | 100.0 | 8,109 | 74,179,101 | 100.7 | 100.0 | 27,652 | 200,369,683 | 94.0 | 100.0 | 419 | 3,314,289 | 92.0 |

市町村制度別保証状況

(単位:千円,%)

| | 保証承諾 | | | | | | | | 3月末保証債務残高 | | | | 代位弁済 (29年度累計) | | |
|------------|------|-----------|-------|-------|--------|------------|-------|-------|-----------|------------|-------|-------|------------------|---------|---------|
| | 3月中 | | | | 29年度累計 | | | | 件数 | 金額 | 前年比 | 構成比 | 件数 | 金額 | 前年比 |
| | 件数 | 金額 | 前年比 | 構成比 | 件数 | 金額 | 前年比 | 構成比 | | | | | | | |
| 秋田市 | 76 | 791,020 | 83.8 | 21.7 | 575 | 6,223,376 | 100.7 | 22.4 | 1,345 | 11,177,958 | 118.0 | 20.4 | 11 | 45,444 | 131.5 |
| 秋田市(設備) | 1 | 1,650 | * | 0.0 | 3 | 27,450 | * | 0.1 | 12 | 96,964 | 92.1 | 0.2 | 0 | 0 | * |
| 秋田市(空き店舗) | 0 | 0 | * | * | 0 | 0 | * | * | 1 | 3,400 | 18.4 | 0.0 | 0 | 0 | * |
| 秋田市(商業施設) | 0 | 0 | * | * | 0 | 0 | * | * | 0 | 0 | * | * | 0 | 0 | * |
| 秋田市(創業) | 0 | 0 | * | * | 28 | 163,020 | 113.5 | 0.6 | 125 | 514,650 | 108.3 | 0.9 | 5 | 15,931 | 2,963.2 |
| 秋田市(新分野) | 0 | 0 | * | * | 1 | 4,000 | * | 0.0 | 2 | 10,575 | 137.8 | 0.0 | 0 | 0 | * |
| 秋田市小口 | 61 | 162,050 | 106.2 | 4.4 | 455 | 1,490,290 | 139.2 | 5.4 | 1,080 | 2,625,920 | 131.6 | 4.8 | 9 | 13,627 | 130.1 |
| 秋田市中心空き店舗 | 0 | 0 | * | * | 2 | 14,700 | * | 0.1 | 6 | 46,498 | 163.8 | 0.1 | 0 | 0 | * |
| 秋田市中心市街地設備 | 0 | 0 | * | * | 2 | 10,640 | 22.6 | 0.0 | 12 | 128,265 | 91.0 | 0.2 | 0 | 0 | * |
| 男鹿市 | 5 | 46,500 | 137.6 | 1.3 | 45 | 421,896 | 161.1 | 1.5 | 128 | 852,691 | 115.2 | 1.6 | 0 | 0 | * |
| 男小口 | 4 | 17,500 | 225.8 | 0.5 | 30 | 84,850 | 123.2 | 0.3 | 86 | 176,281 | 108.6 | 0.3 | 1 | 289 | 28.7 |
| 潟上市 | 3 | 19,860 | 397.2 | 0.5 | 36 | 312,185 | 407.7 | 1.1 | 90 | 463,675 | 149.7 | 0.8 | 0 | 0 | * |
| 潟上市小口 | 6 | 15,500 | 64.6 | 0.4 | 32 | 87,718 | 87.3 | 0.3 | 94 | 219,363 | 103.4 | 0.4 | 0 | 0 | * |
| 五城目町 | 2 | 8,000 | 205.8 | 0.2 | 17 | 104,420 | 222.2 | 0.4 | 41 | 163,102 | 119.8 | 0.3 | 0 | 0 | * |
| マル五小口 | 1 | 1,800 | 40.0 | 0.0 | 13 | 34,170 | 149.5 | 0.1 | 36 | 62,441 | 102.2 | 0.1 | 2 | 1,489 | * |
| 八郎潟町 | 0 | 0 | * | * | 5 | 25,200 | 28.4 | 0.1 | 30 | 102,086 | 87.8 | 0.2 | 1 | 9,330 | 112.4 |
| マル八小口 | 1 | 2,000 | 400.0 | 0.1 | 5 | 12,000 | 88.9 | 0.0 | 11 | 23,054 | 123.7 | 0.0 | 0 | 0 | * |
| 井川町 | 1 | 7,000 | * | 0.2 | 7 | 57,000 | 518.2 | 0.2 | 11 | 74,350 | 213.3 | 0.1 | 0 | 0 | * |
| マル井小口 | 1 | 250 | * | 0.0 | 6 | 9,150 | 160.5 | 0.0 | 11 | 18,898 | 99.0 | 0.0 | 0 | 0 | * |
| 大潟村 | 1 | 2,000 | * | 0.1 | 1 | 2,000 | 10.0 | 0.0 | 0 | 0 | * | * | 0 | 0 | * |
| 潟小口 | 0 | 0 | * | * | 0 | 0 | * | * | 1 | 3,506 | 16.1 | 0.0 | 0 | 0 | * |
| 秋田事業部管内計 | 163 | 1,075,130 | 89.8 | 29.5 | 1,263 | 9,084,065 | 110.6 | 32.8 | 3,122 | 16,763,674 | 119.0 | 30.6 | 29 | 86,109 | 108.6 |
| 大館市 | 28 | 244,003 | 42.2 | 6.7 | 224 | 1,903,864 | 73.8 | 6.9 | 522 | 3,729,941 | 111.0 | 6.8 | 3 | 11,081 | 40.0 |
| 大館市小口 | 11 | 30,100 | 113.0 | 0.8 | 88 | 225,480 | 94.8 | 0.8 | 270 | 494,629 | 100.8 | 0.9 | 4 | 7,422 | 440.6 |
| 大館市(機械) | 0 | 0 | * | * | 14 | 45,010 | 92.9 | 0.2 | 103 | 136,738 | 75.9 | 0.2 | 0 | 0 | * |
| 鹿角市 | 5 | 56,000 | 131.5 | 1.5 | 75 | 565,917 | 80.5 | 2.0 | 188 | 1,263,593 | 102.9 | 2.3 | 4 | 13,728 | 68.5 |
| 鹿小口 | 7 | 14,750 | 110.1 | 0.4 | 45 | 137,760 | 96.5 | 0.5 | 127 | 304,730 | 117.5 | 0.6 | 2 | 6,579 | 1,142.3 |
| 鹿創業 | 1 | 1,000 | * | 0.0 | 6 | 29,330 | * | 0.1 | 6 | 28,222 | * | 0.1 | 0 | 0 | * |
| 北秋田市 | 6 | 20,000 | 25.7 | 0.5 | 101 | 630,030 | 85.6 | 2.3 | 240 | 1,226,656 | 124.1 | 2.2 | 3 | 18,115 | 100.5 |
| 小坂町 | 2 | 7,000 | * | 0.2 | 5 | 25,800 | 88.4 | 0.1 | 22 | 80,264 | 98.6 | 0.1 | 0 | 0 | * |
| 上小阿仁村 | 2 | 12,000 | 171.4 | 0.3 | 9 | 39,300 | 104.9 | 0.1 | 21 | 66,183 | 103.0 | 0.1 | 0 | 0 | * |
| 大館支所管内計 | 62 | 384,853 | 51.2 | 10.6 | 567 | 3,602,491 | 79.8 | 13.0 | 1,499 | 7,330,954 | 110.2 | 13.4 | 16 | 56,925 | 83.7 |
| 能代市 | 12 | 91,500 | 82.3 | 2.5 | 95 | 919,710 | 78.7 | 3.3 | 305 | 2,076,436 | 106.2 | 3.8 | 7 | 27,993 | 111.0 |
| 能小口 | 10 | 30,900 | 76.1 | 0.8 | 132 | 397,890 | 133.5 | 1.4 | 383 | 785,717 | 114.6 | 1.4 | 1 | 4,754 | 124.7 |
| 藤里町 | 0 | 0 | * | * | 5 | 39,400 | 178.3 | 0.1 | 13 | 68,281 | 110.6 | 0.1 | 0 | 0 | * |
| 藤小口 | 1 | 3,000 | 100.0 | 0.1 | 11 | 30,800 | 83.5 | 0.1 | 28 | 59,607 | 130.5 | 0.1 | 0 | 0 | * |
| 三種町 | 5 | 47,000 | 127.0 | 1.3 | 37 | 363,240 | 67.7 | 1.3 | 116 | 924,001 | 101.6 | 1.7 | 1 | 11,998 | * |
| 三小口 | 3 | 12,000 | 150.0 | 0.3 | 34 | 108,570 | 145.4 | 0.4 | 96 | 206,356 | 111.6 | 0.4 | 0 | 0 | * |
| 八峰町 | 0 | 0 | * | * | 5 | 34,800 | 98.9 | 0.1 | 25 | 112,232 | 89.1 | 0.2 | 1 | 6,615 | 91.4 |
| ぶな小口 | 0 | 0 | * | * | 9 | 26,450 | 106.7 | 0.1 | 47 | 92,451 | 87.3 | 0.2 | 0 | 0 | * |
| 能代支所管内計 | 31 | 184,400 | 89.4 | 5.1 | 328 | 1,920,860 | 87.4 | 6.9 | 1,013 | 4,325,081 | 106.2 | 7.9 | 10 | 51,360 | 141.6 |
| 由利本荘市 | 3 | 11,400 | 24.0 | 0.3 | 66 | 407,895 | 74.5 | 1.5 | 239 | 1,011,576 | 97.8 | 1.8 | 2 | 5,233 | 55.2 |
| 由利本荘小口 | 12 | 37,850 | 64.6 | 1.0 | 122 | 337,190 | 124.1 | 1.2 | 306 | 582,124 | 114.4 | 1.1 | 5 | 8,567 | 149.4 |
| 由利本荘特例 | 3 | 7,740 | 39.2 | 0.2 | 37 | 144,876 | 91.6 | 0.5 | 153 | 437,490 | 99.5 | 0.8 | 0 | 0 | * |
| にかほ市 | 13 | 186,700 | 76.1 | 5.1 | 94 | 959,780 | 84.8 | 3.5 | 288 | 2,080,453 | 109.0 | 3.8 | 1 | 5,471 | 22.2 |
| にかほ小口 | 5 | 23,300 | 91.0 | 0.6 | 62 | 228,890 | 107.2 | 0.8 | 206 | 462,042 | 99.1 | 0.8 | 3 | 2,731 | 30.1 |
| に創業 | 0 | 0 | * | * | 4 | 6,400 | * | 0.0 | 4 | 5,937 | * | 0.0 | 0 | 0 | * |
| 本荘支所管内計 | 36 | 266,990 | 67.3 | 7.3 | 385 | 2,085,031 | 89.8 | 7.5 | 1,176 | 4,579,622 | 105.1 | 8.4 | 11 | 22,001 | 44.9 |
| 大仙市 | 23 | 298,600 | 64.0 | 8.2 | 173 | 1,854,639 | 75.4 | 6.7 | 637 | 5,328,060 | 95.3 | 9.7 | 5 | 51,377 | 105.1 |
| 仙小口 | 18 | 49,800 | 63.2 | 1.4 | 138 | 438,320 | 82.9 | 1.6 | 457 | 977,380 | 94.6 | 1.8 | 5 | 17,846 | 225.7 |
| 仙創業 | 2 | 5,000 | * | 0.1 | 12 | 38,600 | * | 0.1 | 11 | 31,940 | * | 0.1 | 0 | 0 | * |
| 仙北市 | 11 | 124,030 | 163.2 | 3.4 | 105 | 999,788 | 122.7 | 3.6 | 217 | 1,565,412 | 132.5 | 2.9 | 2 | 7,157 | 40.7 |
| 七小口 | 8 | 21,730 | 224.0 | 0.6 | 50 | 136,757 | 63.5 | 0.5 | 172 | 349,537 | 89.9 | 0.6 | 0 | 0 | * |
| 七創業 | 1 | 6,500 | * | 0.2 | 6 | 26,800 | * | 0.1 | 6 | 25,084 | * | 0.0 | 0 | 0 | * |
| 美郷町 | 4 | 21,000 | 21.0 | 0.6 | 33 | 277,360 | 47.1 | 1.0 | 107 | 834,462 | 106.7 | 1.5 | 0 | 0 | * |
| 美小口 | 6 | 28,000 | 62.2 | 0.8 | 41 | 127,910 | 67.2 | 0.5 | 135 | 312,650 | 99.2 | 0.6 | 0 | 0 | * |
| 大曲支所管内計 | 73 | 554,660 | 71.4 | 15.2 | 558 | 3,900,174 | 81.3 | 14.1 | 1,742 | 9,424,525 | 101.4 | 17.2 | 12 | 76,380 | 85.7 |
| 横手市 | 68 | 838,500 | 167.9 | 23.0 | 380 | 4,472,972 | 107.2 | 16.1 | 796 | 7,410,899 | 106.2 | 13.5 | 13 | 110,949 | 134.7 |
| 横小口 | 49 | 172,780 | 117.5 | 4.7 | 318 | 1,136,650 | 123.7 | 4.1 | 707 | 1,897,209 | 108.7 | 3.5 | 4 | 9,085 | 69.6 |
| 湯沢市 | 11 | 90,255 | 55.6 | 2.5 | 129 | 1,142,676 | 90.1 | 4.1 | 268 | 2,169,136 | 100.4 | 4.0 | 6 | 45,672 | 117.5 |
| ゆ小口 | 21 | 65,200 | 93.9 | 1.8 | 92 | 347,250 | 113.4 | 1.3 | 280 | 695,211 | 113.6 | 1.3 | 1 | 4,992 | 381.2 |
| 羽後町 | 0 | 0 | * | * | 5 | 15,450 | 60.8 | 0.1 | 12 | 40,259 | 104.8 | 0.1 | 1 | 1,925 | * |
| 東成瀬村 | 1 | 10,000 | * | 0.3 | 2 | 20,000 | 100.0 | 0.1 | 9 | 51,958 | 89.6 | 0.1 | 0 | 0 | * |
| 東小口 | 0 | 0 | * | * | 0 | 0 | * | * | 13 | 36,212 | 77.6 | 0.1 | 0 | 0 | * |
| 横手湯沢支所管内計 | 150 | 1,176,735 | 132.5 | 32.3 | 926 | 7,134,998 | 106.0 | 25.7 | 2,085 | 12,300,884 | 105.7 | 22.5 | 25 | 172,623 | 127.3 |
| 合計 | 515 | 3,642,768 | 86.4 | 100.0 | 4,027 | 27,727,618 | 96.4 | 100.0 | 10,637 | 54,724,740 | 109.2 | 100.0 | 103 | 465,399 | 101.8 |

セーフティネット保証状況

①金融機関別

(単位:千円, %)

| | 保証承諾 | | | | | | 保証承諾累計 | | | | | |
|-----------|--------|-----------|-------|--------------|---------|-----|------------|------------|-------|--------------|-----------|-----|
| | 3月保証承諾 | | | 内セーフティネット保証分 | | | 29年度保証承諾累計 | | | 内セーフティネット保証分 | | |
| | 件数 | 金額 | 構成比 | 件数 | 金額 | 構成比 | 件数 | 金額 | 構成比 | 件数 | 金額 | 構成比 |
| みずほ銀行 | 1 | 19,000 | 0.2 | 0 | 0 | * | 6 | 109,000 | 0.1 | 0 | 0 | * |
| 三菱東京UFJ銀行 | 0 | 0 | * | 0 | 0 | * | 4 | 170,000 | 0.2 | 0 | 0 | * |
| (都市銀行計) | 1 | 19,000 | 0.2 | 0 | 0 | * | 10 | 279,000 | 0.4 | 0 | 0 | * |
| 秋田銀行 | 449 | 3,732,295 | 39.6 | 6 | 79,100 | 2.1 | 3,362 | 29,004,979 | 39.1 | 19 | 332,600 | 1.1 |
| 北都銀行 | 390 | 4,366,954 | 46.4 | 3 | 80,000 | 1.8 | 2,815 | 32,361,878 | 43.6 | 20 | 414,244 | 1.3 |
| 荘内銀行 | 1 | 2,200 | 0.0 | 0 | 0 | * | 6 | 57,200 | 0.1 | 0 | 0 | * |
| 青森銀行 | 4 | 13,600 | 0.1 | 0 | 0 | * | 25 | 183,968 | 0.2 | 0 | 0 | * |
| 山形銀行 | 2 | 20,000 | 0.2 | 0 | 0 | * | 17 | 163,000 | 0.2 | 0 | 0 | * |
| 東北銀行 | 0 | 0 | * | 0 | 0 | * | 14 | 97,520 | 0.1 | 1 | 5,000 | 5.1 |
| 七十七銀行 | 2 | 15,000 | 0.2 | 0 | 0 | * | 4 | 26,000 | 0.0 | 0 | 0 | * |
| 岩手銀行 | 3 | 45,980 | 0.5 | 0 | 0 | * | 17 | 134,260 | 0.2 | 1 | 11,610 | 8.6 |
| みちのく銀行 | 4 | 32,290 | 0.3 | 0 | 0 | * | 38 | 274,050 | 0.4 | 1 | 20,000 | 7.3 |
| (地方銀行計) | 855 | 8,228,319 | 87.3 | 9 | 159,100 | 1.9 | 6,298 | 62,302,855 | 84.0 | 42 | 783,454 | 1.3 |
| 北日本銀行 | 11 | 79,300 | 0.8 | 0 | 0 | * | 67 | 571,701 | 0.8 | 0 | 0 | * |
| きらやか銀行 | 4 | 27,000 | 0.3 | 0 | 0 | * | 45 | 466,324 | 0.6 | 0 | 0 | * |
| (第二地方銀行計) | 15 | 106,300 | 1.1 | 0 | 0 | * | 112 | 1,038,025 | 1.4 | 0 | 0 | * |
| 秋田信用金庫 | 44 | 269,579 | 2.9 | 0 | 0 | * | 457 | 3,325,710 | 4.5 | 4 | 62,663 | 1.9 |
| 羽後信用金庫 | 63 | 317,120 | 3.4 | 0 | 0 | * | 830 | 4,063,593 | 5.5 | 4 | 20,600 | 0.5 |
| (信用金庫計) | 107 | 586,699 | 6.2 | 0 | 0 | * | 1,287 | 7,389,303 | 10.0 | 8 | 83,263 | 1.1 |
| 秋田県信用組合 | 39 | 367,720 | 3.9 | 2 | 20,000 | 5.4 | 382 | 2,806,630 | 3.8 | 16 | 135,800 | 4.8 |
| (信用組合計) | 39 | 367,720 | 3.9 | 2 | 20,000 | 5.4 | 382 | 2,806,630 | 3.8 | 16 | 135,800 | 4.8 |
| 商工組合中央金庫 | 5 | 113,592 | 1.2 | 0 | 0 | * | 20 | 363,289 | 0.5 | 0 | 0 | * |
| (その他計) | 5 | 113,592 | 1.2 | 0 | 0 | * | 20 | 363,289 | 0.5 | 0 | 0 | * |
| 合計 | 1,022 | 9,421,630 | 100.0 | 11 | 179,100 | 1.9 | 8,109 | 74,179,101 | 100.0 | 66 | 1,002,517 | 1.4 |

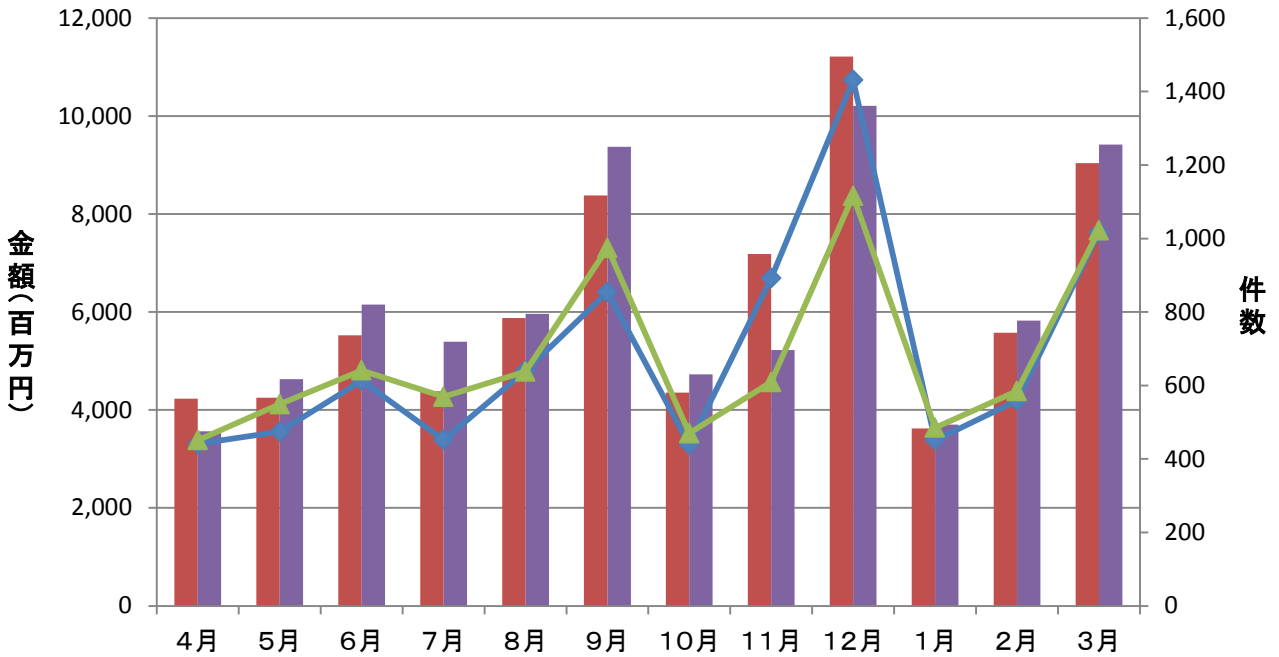
②市町村別

(単位:千円, %)

| | 保証承諾 | | | | | | 保証承諾累計 | | | | | |
|-------|--------|-----------|-------|--------------|---------|------|------------|------------|-------|--------------|-----------|-----|
| | 3月保証承諾 | | | 内セーフティネット保証分 | | | 29年度保証承諾累計 | | | 内セーフティネット保証分 | | |
| | 件数 | 金額 | 構成比 | 件数 | 金額 | 構成比 | 件数 | 金額 | 構成比 | 件数 | 金額 | 構成比 |
| 秋田市 | 283 | 2,830,982 | 30.0 | 1 | 10,000 | 0.4 | 2,261 | 22,638,573 | 30.5 | 12 | 276,973 | 1.2 |
| 能代市 | 58 | 417,700 | 4.4 | 0 | 0 | * | 455 | 3,445,082 | 4.6 | 0 | 0 | * |
| 横手市 | 158 | 1,407,780 | 14.9 | 1 | 30,000 | 2.1 | 1,048 | 9,146,154 | 12.3 | 4 | 128,000 | 1.4 |
| 大館市 | 63 | 707,313 | 7.5 | 1 | 50,000 | 7.1 | 596 | 5,789,453 | 7.8 | 17 | 290,344 | 5.0 |
| 北秋田市 | 22 | 255,600 | 2.7 | 0 | 0 | * | 223 | 2,343,030 | 3.2 | 8 | 35,000 | 1.5 |
| 由利本荘市 | 52 | 342,190 | 3.6 | 0 | 0 | * | 571 | 3,747,074 | 5.1 | 0 | 0 | * |
| にかほ市 | 27 | 265,300 | 2.8 | 0 | 0 | * | 283 | 2,239,944 | 3.0 | 1 | 9,000 | 0.4 |
| 男鹿市 | 24 | 160,380 | 1.7 | 3 | 33,000 | 20.6 | 176 | 1,831,076 | 2.5 | 4 | 53,000 | 2.9 |
| 潟上市 | 27 | 382,160 | 4.1 | 0 | 0 | * | 226 | 2,240,342 | 3.0 | 0 | 0 | * |
| 湯沢市 | 69 | 708,775 | 7.5 | 1 | 20,000 | 2.8 | 442 | 4,181,028 | 5.6 | 6 | 66,600 | 1.6 |
| 大仙市 | 83 | 812,500 | 8.6 | 2 | 16,100 | 2.0 | 653 | 5,966,947 | 8.0 | 3 | 46,100 | 0.8 |
| 仙北市 | 32 | 331,760 | 3.5 | 0 | 0 | * | 257 | 2,678,486 | 3.6 | 1 | 6,000 | 0.2 |
| 鹿角市 | 30 | 152,650 | 1.6 | 2 | 20,000 | 13.1 | 223 | 1,924,819 | 2.6 | 10 | 91,500 | 4.8 |
| 13市計 | 928 | 8,775,090 | 93.1 | 11 | 179,100 | 2.0 | 7,414 | 68,172,007 | 91.9 | 66 | 1,002,517 | 1.5 |
| 小坂町 | 6 | 30,290 | 0.3 | 0 | 0 | * | 22 | 125,390 | 0.2 | 0 | 0 | * |
| 鹿角郡計 | 6 | 30,290 | 0.3 | 0 | 0 | * | 22 | 125,390 | 0.2 | 0 | 0 | * |
| 上小阿仁村 | 4 | 25,000 | 0.3 | 0 | 0 | * | 15 | 90,300 | 0.1 | 0 | 0 | * |
| 北秋田郡計 | 4 | 25,000 | 0.3 | 0 | 0 | * | 15 | 90,300 | 0.1 | 0 | 0 | * |
| 藤里町 | 4 | 38,000 | 0.4 | 0 | 0 | * | 28 | 148,700 | 0.2 | 0 | 0 | * |
| 三種町 | 26 | 146,000 | 1.5 | 0 | 0 | * | 134 | 1,107,370 | 1.5 | 0 | 0 | * |
| 八峰町 | 3 | 27,500 | 0.3 | 0 | 0 | * | 41 | 330,350 | 0.4 | 0 | 0 | * |
| 山本郡計 | 33 | 211,500 | 2.2 | 0 | 0 | * | 203 | 1,586,420 | 2.1 | 0 | 0 | * |
| 五城目町 | 9 | 26,200 | 0.3 | 0 | 0 | * | 79 | 510,090 | 0.7 | 0 | 0 | * |
| 八郎潟町 | 1 | 7,300 | 0.1 | 0 | 0 | * | 33 | 138,244 | 0.2 | 0 | 0 | * |
| 井川町 | 4 | 12,950 | 0.1 | 0 | 0 | * | 35 | 275,750 | 0.4 | 0 | 0 | * |
| 大潟村 | 1 | 2,000 | 0.0 | 0 | 0 | * | 17 | 503,500 | 0.7 | 0 | 0 | * |
| 南秋田郡計 | 15 | 48,450 | 0.5 | 0 | 0 | * | 164 | 1,427,584 | 1.9 | 0 | 0 | * |
| 美郷町 | 19 | 158,100 | 1.7 | 0 | 0 | * | 145 | 1,053,550 | 1.4 | 0 | 0 | * |
| 仙北郡計 | 19 | 158,100 | 1.7 | 0 | 0 | * | 145 | 1,053,550 | 1.4 | 0 | 0 | * |
| 羽後町 | 10 | 67,000 | 0.7 | 0 | 0 | * | 94 | 825,890 | 1.1 | 0 | 0 | * |
| 東成瀬村 | 4 | 26,200 | 0.3 | 0 | 0 | * | 22 | 189,200 | 0.3 | 0 | 0 | * |
| 雄勝郡計 | 14 | 93,200 | 1.0 | 0 | 0 | * | 116 | 1,015,090 | 1.4 | 0 | 0 | * |
| 県外 | 3 | 80,000 | 0.8 | 0 | 0 | * | 30 | 708,760 | 1.0 | 0 | 0 | * |
| 合計 | 1,022 | 9,421,630 | 100.0 | 11 | 179,100 | 1.9 | 8,109 | 74,179,101 | 100.0 | 66 | 1,002,517 | 1.4 |

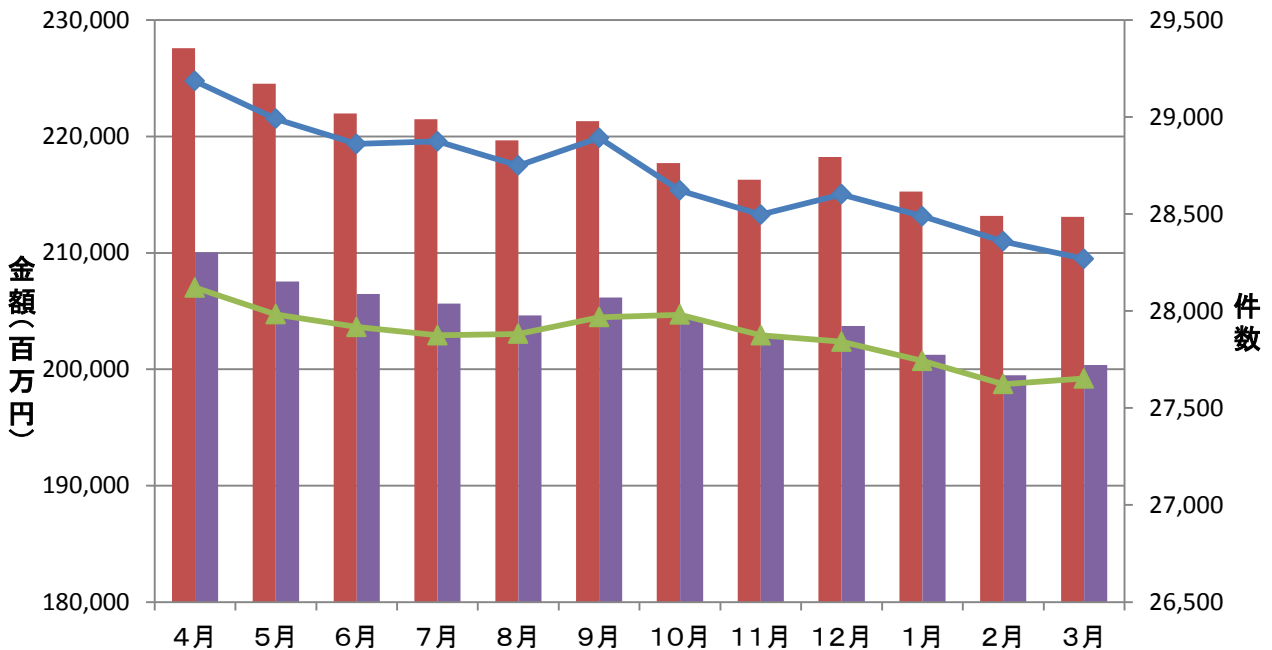
保証承諾実績

■ 平成28年度承諾金額 ■ 平成29年度承諾金額 ◆ 平成28年度承諾件数 ▲ 平成29年度承諾件数



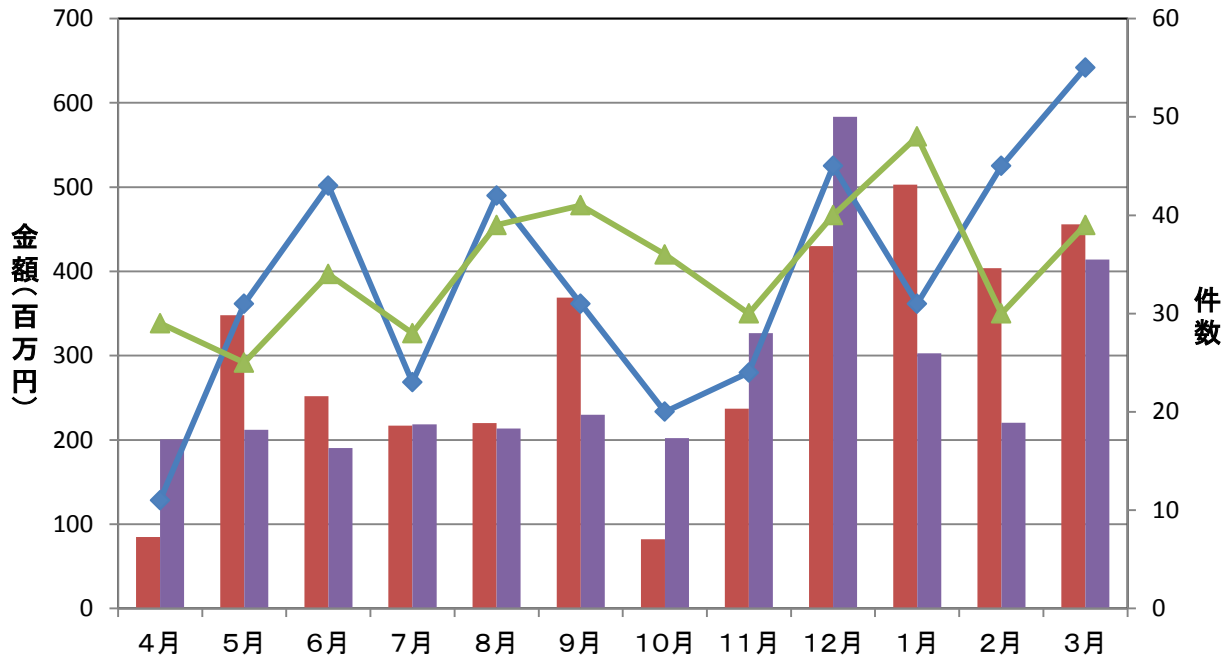
保証債務残高実績

■ 平成28年度残高 ■ 平成29年度残高 ◆ 平成28年度残高件数 ▲ 平成29年度残高件数



代位弁済実績

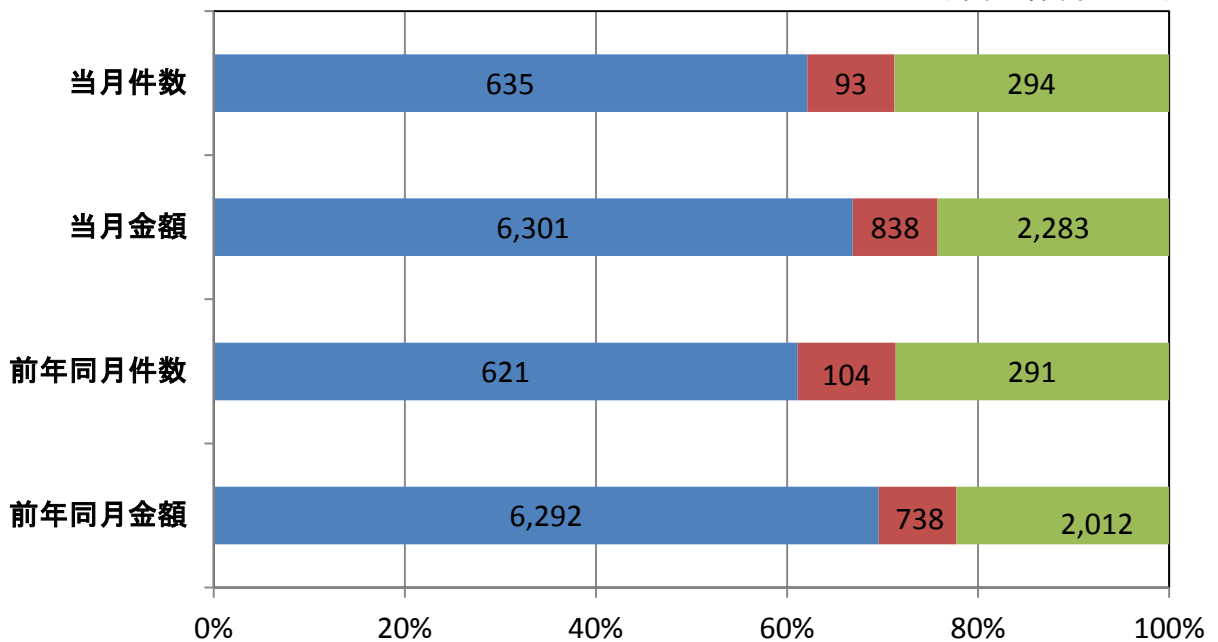
■ 平成28年度代弁金額 ■ 平成29年度代弁金額 ◆ 平成28年度代弁件数 ▲ 平成29年度代弁件数



資金使途別保証承諾実績

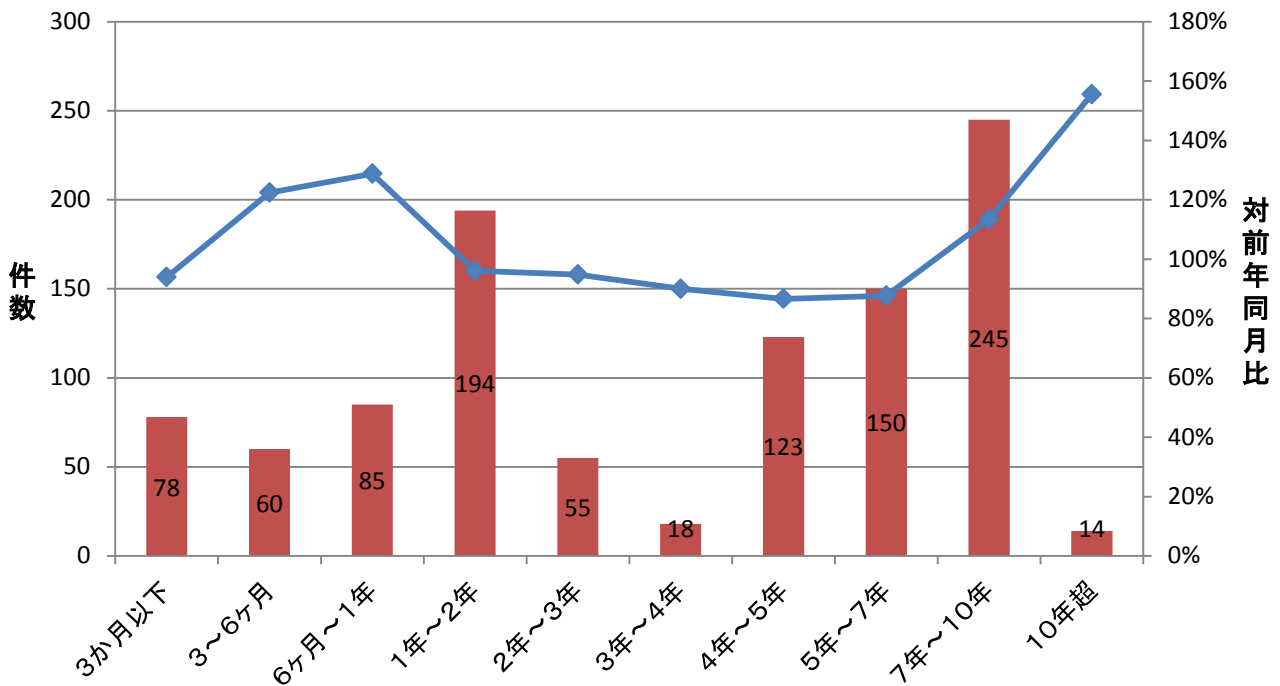
■ 運転資金 ■ 設備資金 ■ 運転設備資金

(単位: 件、百万円)



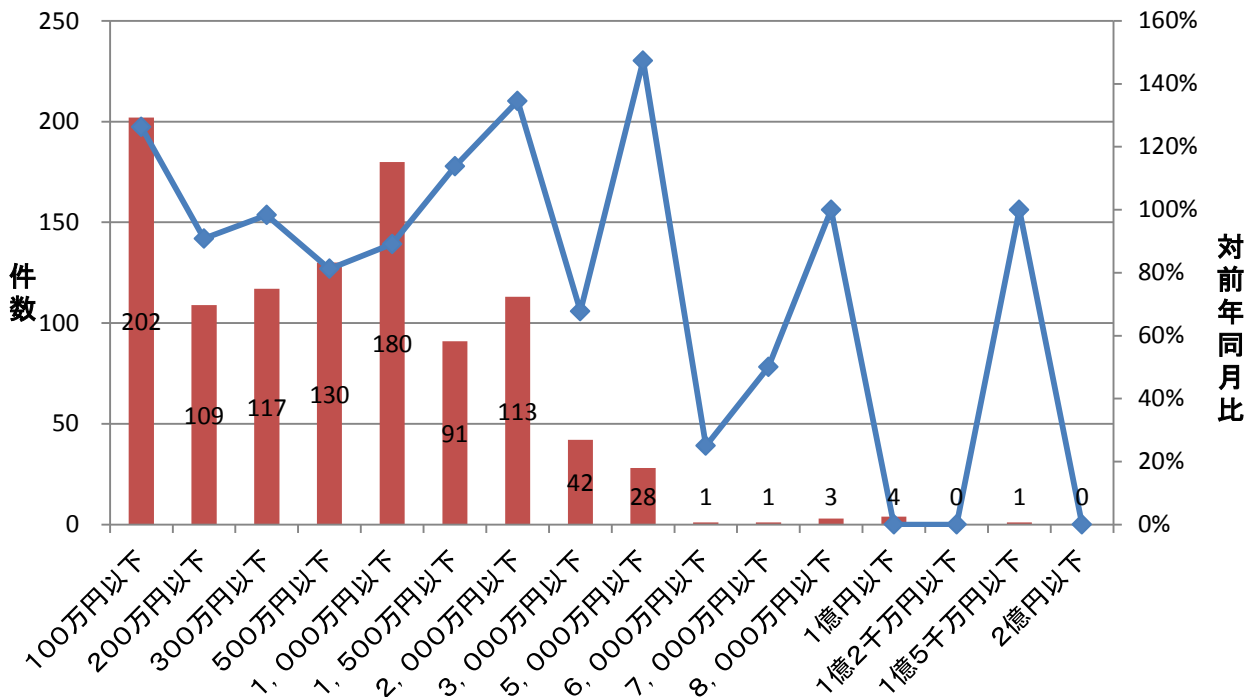
期間別保証承諾実績

■ 件数(当月) ◆ 対前年同月比



金額別保証承諾実績

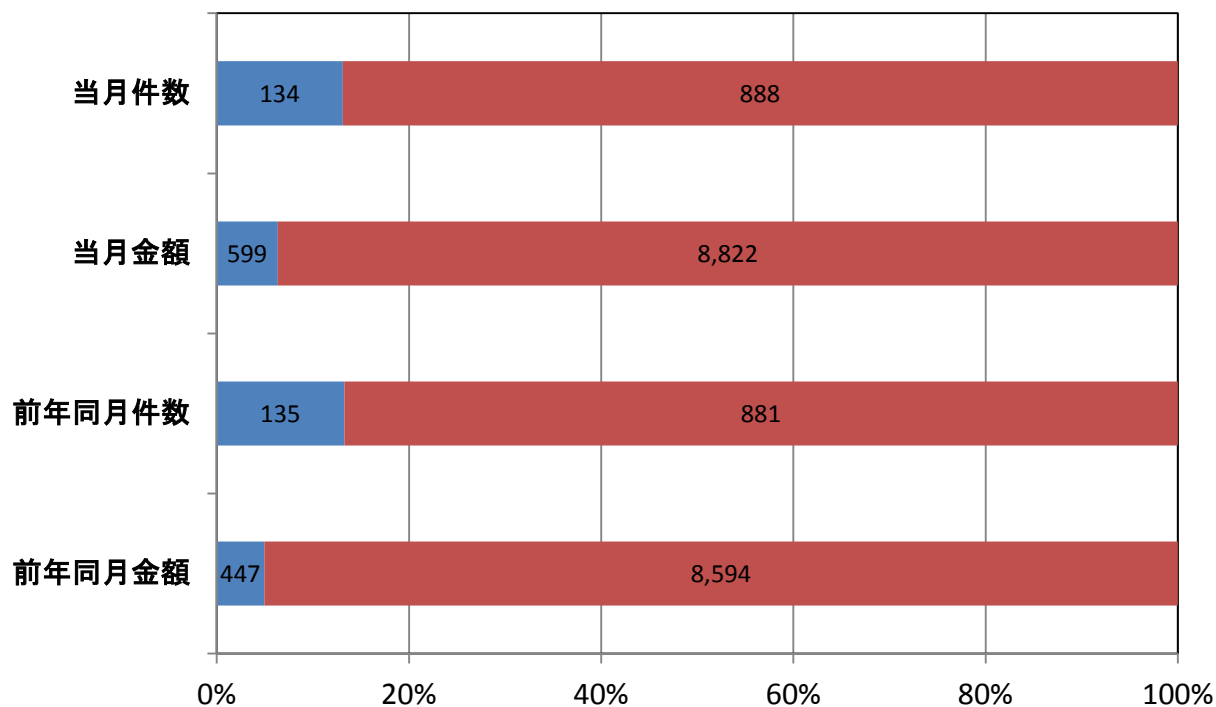
■ 件数(当月) ◆ 対前年同月比



新規・継続別保証承諾実績

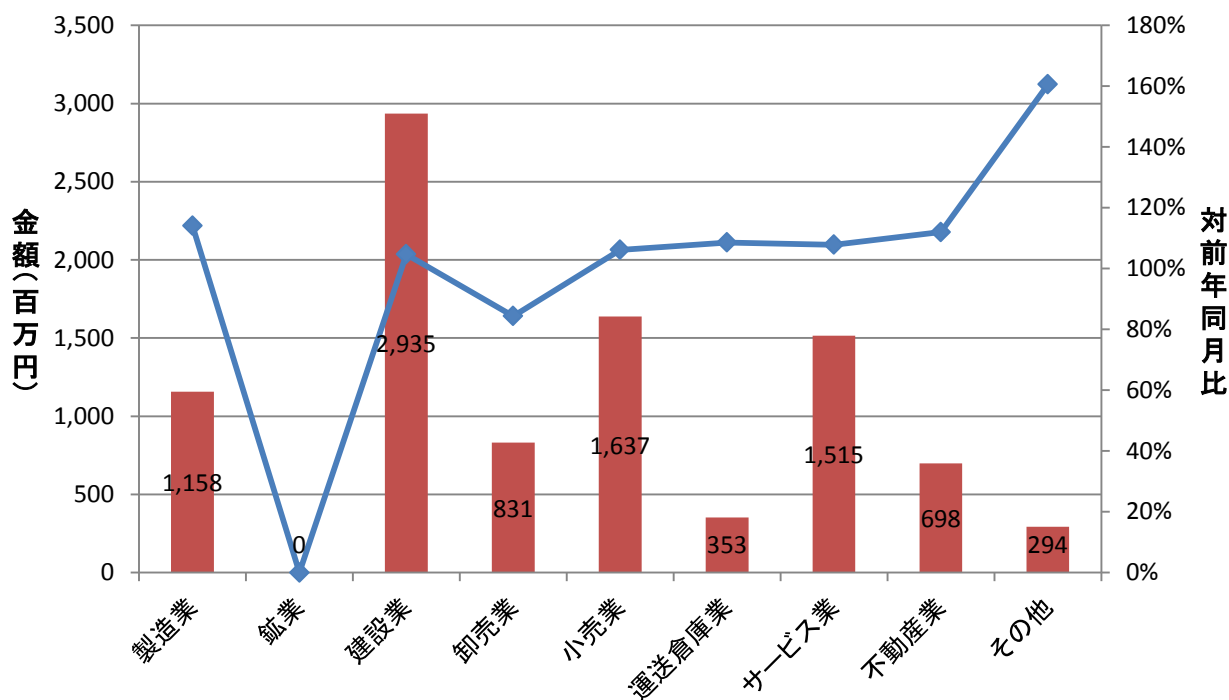
■ 新規 ■ 継続

(単位: 件、百万円)



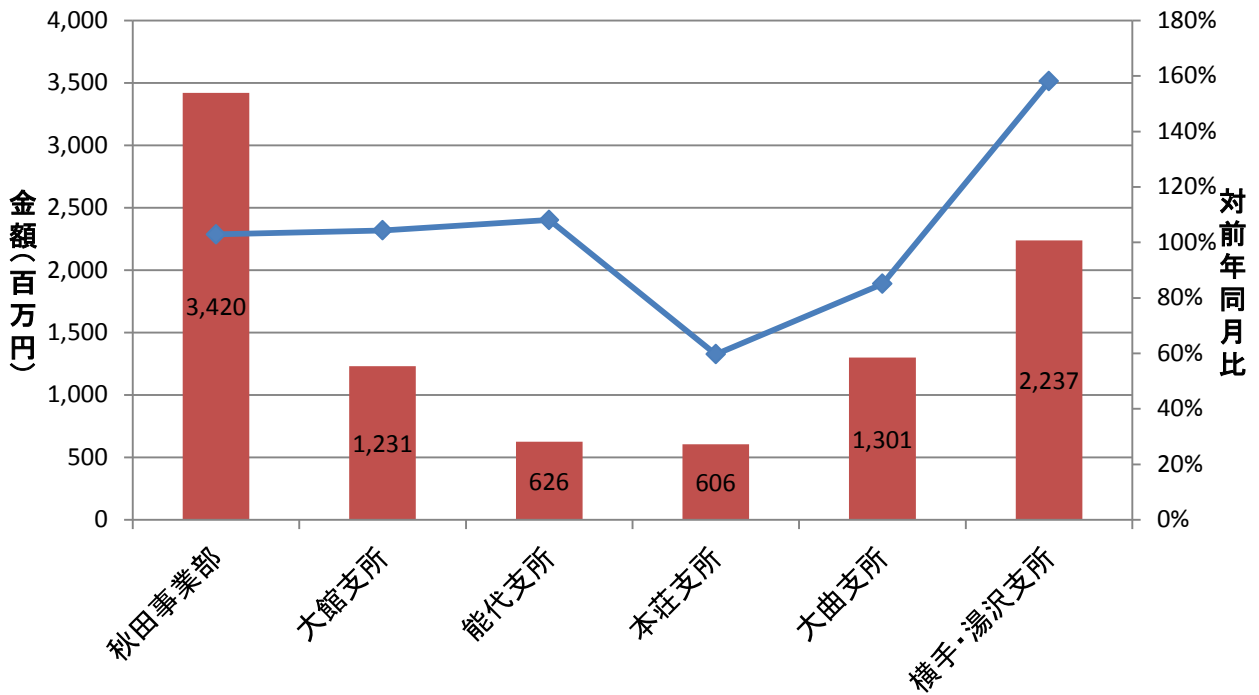
業種別保証承諾実績

■ 金額(当月) ◆ 対前年同月比

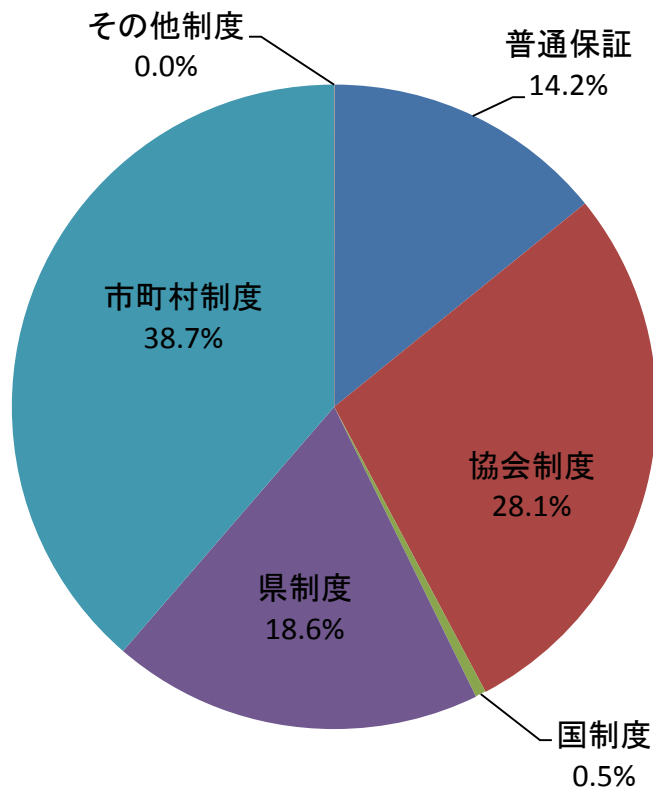


部支所別保証承諾実績

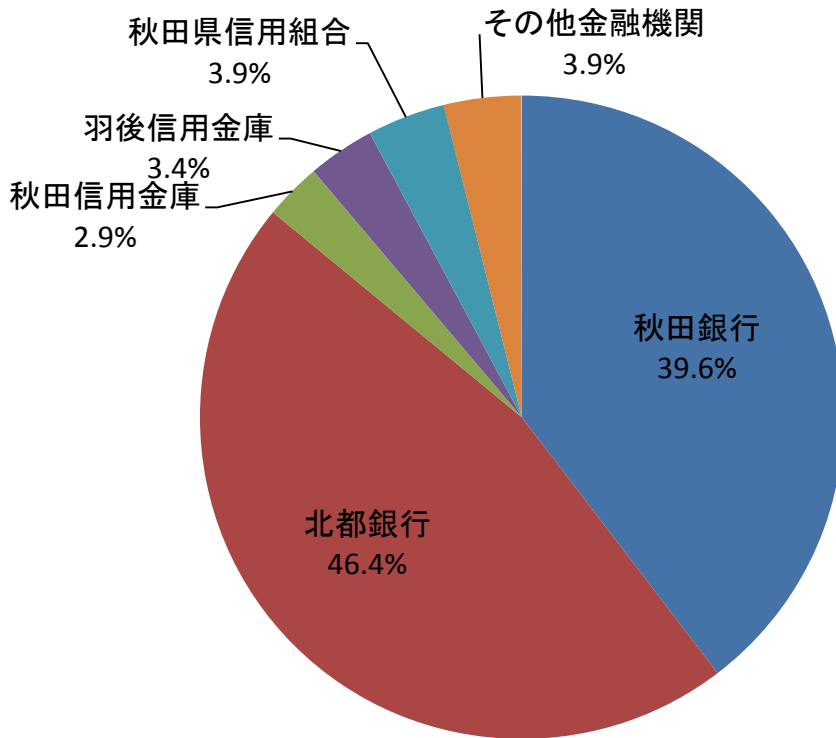
金額(当月) 対前年同月比



制度別保証金額割合(当月)



金融機関別保証承諾割合



金融機関別一般・セーフティネット保証承諾割合(金額、当月)

■ 一般 ■ セーフティ

