

5月事業概況

(単位:千円, %)

| 項目 | 件数 | 金額 | 対前年比 |
|--------|--------|-------------|-------|
| 保証利用企業 | 13,888 | — | 98.5 |
| 保証申込 | 476 | 4,371,627 | 106.0 |
| 保証承諾 | 474 | 4,251,862 | 100.7 |
| 保証残高 | 28,991 | 224,538,856 | 95.5 |
| 代位弁済 | 31 | 348,114 | 140.4 |

資金使途別保証承諾状況

(単位:千円, %)

| | 5 月 中 | | | | 28 年 度 累 計 | | | |
|--------|-------|-----------|-------|-------|------------|-----------|-------|-------|
| | 件数 | 金額 | 前年比 | 構成比 | 件数 | 金額 | 前年比 | 構成比 |
| 運転資金 | 283 | 2,834,342 | 95.5 | 66.7 | 571 | 5,863,276 | 109.8 | 69.1 |
| 設備資金 | 55 | 254,070 | 61.5 | 6.0 | 106 | 566,520 | 75.6 | 6.7 |
| 運転設備資金 | 136 | 1,163,420 | 138.4 | 27.4 | 238 | 2,050,790 | 122.8 | 24.2 |
| 合 計 | 474 | 4,251,832 | 100.7 | 100.0 | 915 | 8,480,586 | 109.3 | 100.0 |

期間別保証承諾状況

(単位:千円, %)

| | 5 月 中 | | | | 28 年 度 累 計 | | | |
|--------|-------|-----------|-------|-------|------------|-----------|-------|-------|
| | 件数 | 金額 | 前年比 | 構成比 | 件数 | 金額 | 前年比 | 構成比 |
| 3か月以下 | 30 | 329,050 | 201.7 | 7.7 | 64 | 593,722 | 221.4 | 7.0 |
| 6か月以下 | 42 | 363,600 | 60.4 | 8.6 | 79 | 666,350 | 66.8 | 7.9 |
| 1か年以下 | 34 | 499,844 | 101.9 | 11.8 | 73 | 1,074,844 | 117.1 | 12.7 |
| 2か年以下 | 67 | 332,440 | 94.2 | 7.8 | 127 | 611,896 | 78.6 | 7.2 |
| 3か年以下 | 19 | 53,710 | 170.1 | 1.3 | 33 | 78,560 | 86.4 | 0.9 |
| 4か年以下 | 12 | 25,540 | 95.7 | 0.6 | 19 | 41,100 | 50.3 | 0.5 |
| 5か年以下 | 64 | 311,040 | 82.6 | 7.3 | 114 | 605,370 | 95.3 | 7.1 |
| 7か年以下 | 83 | 647,910 | 83.5 | 15.2 | 155 | 1,424,966 | 101.4 | 16.8 |
| 10か年以下 | 114 | 1,395,198 | 126.9 | 32.8 | 237 | 2,935,678 | 135.8 | 34.6 |
| 10か年超 | 9 | 293,500 | 96.5 | 6.9 | 14 | 448,100 | 105.1 | 5.3 |
| 合 計 | 474 | 4,251,832 | 100.7 | 100.0 | 915 | 8,480,586 | 109.3 | 100.0 |

金額別保証承諾状況

(単位:千円, %)

| | 5 月 中 | | | | 28 年 度 累 計 | | | |
|-----------|-------|-----------|-------|-------|------------|-----------|-------|-------|
| | 件数 | 金額 | 前年比 | 構成比 | 件数 | 金額 | 前年比 | 構成比 |
| 100万円以下 | 49 | 40,134 | 110.8 | 0.9 | 88 | 72,302 | 85.7 | 0.9 |
| 200万円以下 | 65 | 115,090 | 88.8 | 2.7 | 112 | 195,250 | 79.6 | 2.3 |
| 300万円以下 | 68 | 193,770 | 104.6 | 4.6 | 135 | 384,070 | 106.1 | 4.5 |
| 500万円以下 | 75 | 342,490 | 87.9 | 8.1 | 148 | 670,760 | 89.4 | 7.9 |
| 1,000万円以下 | 100 | 835,000 | 112.6 | 19.6 | 202 | 1,709,600 | 114.5 | 20.2 |
| 1,500万円以下 | 42 | 565,600 | 106.3 | 13.3 | 76 | 1,030,056 | 125.3 | 12.1 |
| 2,000万円以下 | 36 | 701,050 | 124.0 | 16.5 | 73 | 1,418,350 | 123.7 | 16.7 |
| 3,000万円以下 | 25 | 684,398 | 97.9 | 16.1 | 46 | 1,257,398 | 118.0 | 14.8 |
| 5,000万円以下 | 8 | 338,800 | 45.7 | 8.0 | 26 | 1,067,300 | 69.3 | 12.6 |
| 6,000万円以下 | 2 | 112,000 | 186.7 | 2.6 | 3 | 172,000 | 155.0 | 2.0 |
| 7,000万円以下 | 2 | 133,500 | 190.7 | 3.1 | 2 | 133,500 | 190.7 | 1.6 |
| 8,000万円以下 | 0 | 0 | * | * | 1 | 80,000 | 110.8 | 0.9 |
| 1億円以下 | 2 | 190,000 | * | 4.5 | 3 | 290,000 | * | 3.4 |
| 1億2千万円以下 | 0 | 0 | * | * | 0 | 0 | * | * |
| 1億5千万円以下 | 0 | 0 | * | * | 0 | 0 | * | * |
| 2億円以下 | 0 | 0 | * | * | 0 | 0 | * | * |
| 合 計 | 474 | 4,251,832 | 100.7 | 100.0 | 915 | 8,480,586 | 109.3 | 100.0 |

新規・継続別保証承諾状況

(単位:千円, %)

| | 5 月 中 | | | | 28 年 度 累 計 | | | |
|-----|-------|-----------|-------|-------|------------|-----------|-------|-------|
| | 件数 | 金額 | 前年比 | 構成比 | 件数 | 金額 | 前年比 | 構成比 |
| 新規 | 54 | 294,280 | 217.6 | 6.9 | 80 | 426,640 | 143.4 | 5.0 |
| 継続 | 420 | 3,957,552 | 96.8 | 93.1 | 835 | 8,053,946 | 107.9 | 95.0 |
| 合 計 | 474 | 4,251,832 | 100.7 | 100.0 | 915 | 8,480,586 | 109.3 | 100.0 |

金融機関別保証状況

(単位:千円,%)

| | 保証承諾 | | | | | | | | 5月末保債務残高 | | | | 代位弁済 (28年度累計) | | |
|-----------|------|-----------|-------|-------|--------|-----------|-------|-------|----------|-------------|-------|-------|------------------|---------|-------|
| | 5月中 | | | | 28年度累計 | | | | 件数 | 金額 | 前年比 | 構成比 | 件数 | 金額 | 前年比 |
| | 件数 | 金額 | 前年比 | 構成比 | 件数 | 金額 | 前年比 | 構成比 | | | | | | | |
| みずほ銀行 | 1 | 30,000 | 75.0 | 0.7 | 2 | 70,000 | 77.8 | 0.8 | 60 | 1,017,958 | 82.5 | 0.5 | 0 | 0 | * |
| 三菱東京UFJ銀行 | 0 | 0 | * | * | 0 | 0 | * | * | 49 | 789,848 | 81.2 | 0.4 | 0 | 0 | * |
| (都市銀行計) | 1 | 30,000 | 75.0 | 0.7 | 2 | 70,000 | 77.8 | 0.8 | 109 | 1,807,806 | 81.9 | 0.8 | 0 | 0 | * |
| 秋田銀行 | 202 | 1,856,248 | 107.0 | 43.7 | 363 | 3,430,084 | 107.9 | 40.4 | 12,764 | 103,383,446 | 94.9 | 46.0 | 12 | 113,698 | 97.2 |
| 北都銀行 | 150 | 1,612,840 | 101.6 | 37.9 | 306 | 3,567,152 | 120.8 | 42.1 | 9,336 | 79,401,603 | 95.8 | 35.4 | 19 | 279,259 | 160.5 |
| 荘内銀行 | 1 | 20,000 | * | 0.5 | 1 | 20,000 | * | 0.2 | 38 | 333,890 | 75.0 | 0.1 | 0 | 0 | * |
| 青森銀行 | 0 | 0 | * | * | 1 | 940 | 9.4 | 0.0 | 105 | 642,264 | 83.3 | 0.3 | 0 | 0 | * |
| 山形銀行 | 1 | 10,000 | 17.2 | 0.2 | 2 | 25,000 | 24.5 | 0.3 | 95 | 815,038 | 97.8 | 0.4 | 0 | 0 | * |
| 東北銀行 | 0 | 0 | * | * | 4 | 30,000 | 197.4 | 0.4 | 128 | 902,441 | 84.1 | 0.4 | 2 | 15,643 | * |
| 七十七銀行 | 0 | 0 | * | * | 0 | 0 | * | * | 19 | 129,388 | 69.9 | 0.1 | 0 | 0 | * |
| 岩手銀行 | 0 | 0 | * | * | 0 | 0 | * | * | 74 | 732,167 | 111.8 | 0.3 | 0 | 0 | * |
| みちのく銀行 | 4 | 32,500 | 104.8 | 0.8 | 4 | 32,500 | 78.3 | 0.4 | 185 | 1,632,879 | 89.1 | 0.7 | 0 | 0 | * |
| (地方銀行計) | 358 | 3,531,588 | 103.2 | 83.1 | 681 | 7,105,676 | 112.8 | 83.8 | 22,744 | 187,973,115 | 95.2 | 83.7 | 33 | 408,601 | 140.4 |
| 北日本銀行 | 2 | 5,780 | 6.8 | 0.1 | 5 | 14,780 | 14.7 | 0.2 | 291 | 2,196,161 | 90.8 | 1.0 | 0 | 0 | * |
| きらやか銀行 | 4 | 17,544 | 93.7 | 0.4 | 10 | 32,780 | 101.7 | 0.4 | 224 | 1,700,430 | 103.3 | 0.8 | 0 | 0 | * |
| (第二地方銀行計) | 6 | 23,324 | 22.5 | 0.5 | 15 | 47,560 | 35.8 | 0.6 | 515 | 3,896,591 | 95.8 | 1.7 | 0 | 0 | * |
| 秋田信用金庫 | 23 | 144,040 | 48.3 | 3.4 | 50 | 298,880 | 62.3 | 3.5 | 1,877 | 10,988,600 | 96.1 | 4.9 | 1 | 1,073 | * |
| 羽後信用金庫 | 46 | 241,080 | 171.4 | 5.7 | 95 | 471,180 | 132.5 | 5.6 | 2,265 | 10,043,780 | 99.8 | 4.5 | 6 | 14,550 | 90.1 |
| (信用金庫計) | 69 | 385,120 | 87.8 | 9.1 | 145 | 770,060 | 92.2 | 9.1 | 4,142 | 21,032,380 | 97.9 | 9.4 | 7 | 15,623 | 96.7 |
| 秋田県信用組合 | 40 | 281,800 | 146.4 | 6.6 | 72 | 487,290 | 127.7 | 5.7 | 1,361 | 7,849,279 | 99.9 | 3.5 | 2 | 8,599 | 224.7 |
| (信用組合計) | 40 | 281,800 | 146.4 | 6.6 | 72 | 487,290 | 127.7 | 5.7 | 1,361 | 7,849,279 | 99.9 | 3.5 | 2 | 8,599 | 224.7 |
| 商工組合中央金庫 | 0 | 0 | * | * | 0 | 0 | * | * | 119 | 1,779,684 | 92.4 | 0.8 | 0 | 0 | * |
| かづの農協 | 0 | 0 | * | * | 0 | 0 | * | * | 1 | 200,000 | * | 0.1 | 0 | 0 | * |
| (その他計) | 0 | 0 | * | * | 0 | 0 | * | * | 120 | 1,979,684 | 102.8 | 0.9 | 0 | 0 | * |
| 合計 | 474 | 4,251,832 | 100.7 | 100.0 | 915 | 8,480,586 | 109.3 | 100.0 | 28,991 | 224,538,856 | 95.5 | 100.0 | 42 | 432,822 | 121.2 |

業種別保証状況

(単位:千円,%)

| | 保証承諾 | | | | | | | | 5月末保証債務残高 | | | | 代位弁済 (28年度累計) | | |
|-------------|------|-----------|----------|-------|--------|-----------|-------|-------|-----------|-------------|-------|-------|------------------|---------|-------|
| | 5月中 | | | | 28年度累計 | | | | 件数 | 金額 | 前年比 | 構成比 | 件数 | 金額 | 前年比 |
| | 件数 | 金額 | 前年比 | 構成比 | 件数 | 金額 | 前年比 | 構成比 | | | | | | | |
| 食料品工業 | 14 | 147,600 | 140.2 | 3.5 | 21 | 196,600 | 73.3 | 2.3 | 794 | 6,807,290 | 92.5 | 3.0 | 0 | 0 | * |
| 繊維品工業 | 3 | 33,000 | 48.3 | 0.8 | 5 | 58,000 | 56.8 | 0.7 | 393 | 2,566,556 | 93.2 | 1.1 | 0 | 0 | * |
| 木材・木製品工業 | 5 | 27,900 | 27.1 | 0.7 | 13 | 122,900 | 82.8 | 1.4 | 388 | 4,542,290 | 91.8 | 2.0 | 0 | 0 | * |
| 家具・建具工業 | 5 | 31,000 | 356.3 | 0.7 | 7 | 44,000 | 125.4 | 0.5 | 241 | 1,403,713 | 95.0 | 0.6 | 3 | 7,581 | 7.2 |
| 紙工業 | 1 | 8,000 | 100.0 | 0.2 | 1 | 8,000 | 50.0 | 0.1 | 26 | 319,901 | 96.2 | 0.1 | 0 | 0 | * |
| 製版・製本業 | 0 | 0 | * | * | 0 | 0 | * | * | 4 | 11,779 | 77.7 | 0.0 | 0 | 0 | * |
| 化学工業 | 0 | 0 | * | * | 0 | 0 | * | * | 8 | 93,408 | 81.7 | 0.0 | 0 | 0 | * |
| 石油石炭工業 | 0 | 0 | * | * | 0 | 0 | * | * | 11 | 290,268 | 106.8 | 0.1 | 0 | 0 | * |
| ゴム・プラスチック工業 | 2 | 26,000 | 216.7 | 0.6 | 4 | 39,000 | 325.0 | 0.5 | 53 | 540,906 | 90.3 | 0.2 | 0 | 0 | * |
| ゴム製品工業 | 0 | 0 | * | * | 0 | 0 | * | * | 8 | 34,337 | 79.2 | 0.0 | 0 | 0 | * |
| 皮革工業 | 0 | 0 | * | * | 0 | 0 | * | * | 57 | 462,025 | 91.0 | 0.2 | 0 | 0 | * |
| 窯業 | 1 | 30,000 | 120.0 | 0.7 | 3 | 57,500 | 124.7 | 0.7 | 134 | 1,299,083 | 91.9 | 0.6 | 0 | 0 | * |
| 機械工業 | 7 | 108,400 | 69.2 | 2.5 | 10 | 174,400 | 64.1 | 2.1 | 603 | 5,949,593 | 91.0 | 2.6 | 0 | 0 | * |
| 電気機器工業 | 6 | 141,000 | 14,100.0 | 3.3 | 10 | 176,700 | 669.3 | 2.1 | 253 | 3,415,823 | 87.8 | 1.5 | 0 | 0 | * |
| 車輛工業 | 1 | 25,000 | * | 0.6 | 1 | 25,000 | * | 0.3 | 46 | 612,815 | 89.4 | 0.3 | 0 | 0 | * |
| 船舶工業 | 0 | 0 | * | * | 0 | 0 | * | * | 6 | 13,401 | 64.1 | 0.0 | 0 | 0 | * |
| 金属工業 | 2 | 31,000 | 36.7 | 0.7 | 7 | 123,550 | 91.3 | 1.5 | 337 | 4,347,517 | 97.5 | 1.9 | 0 | 0 | * |
| ソフトウェア業 | 1 | 10,000 | * | 0.2 | 2 | 14,000 | 25.0 | 0.2 | 64 | 581,661 | 103.3 | 0.3 | 0 | 0 | * |
| 情報処理サービス業 | 0 | 0 | * | * | 0 | 0 | * | * | 8 | 25,759 | 75.8 | 0.0 | 0 | 0 | * |
| 農林漁業 | 0 | 0 | * | * | 1 | 4,000 | * | * | 75 | 411,995 | 89.3 | 0.2 | 0 | 0 | * |
| その他の工業 | 11 | 52,500 | 97.2 | 1.2 | 27 | 158,450 | 156.3 | 1.9 | 908 | 3,713,976 | 94.9 | 1.7 | 0 | 0 | * |
| 製造業計 | 59 | 671,400 | 106.4 | 15.8 | 112 | 1,202,100 | 97.5 | 14.2 | 4,417 | 37,444,096 | 92.7 | 16.7 | 3 | 7,581 | 6.1 |
| 鉱業 | 2 | 33,500 | 145.7 | 0.8 | 3 | 39,500 | 171.7 | 0.5 | 109 | 1,339,466 | 100.0 | 0.6 | 0 | 0 | * |
| 建設業 | 139 | 1,176,400 | 97.8 | 27.7 | 286 | 2,464,048 | 121.5 | 29.1 | 7,532 | 52,623,073 | 94.5 | 23.4 | 8 | 122,131 | 231.1 |
| 卸売業 | 32 | 443,500 | 83.4 | 10.4 | 81 | 1,097,030 | 109.2 | 12.9 | 2,187 | 22,827,659 | 91.8 | 10.2 | 10 | 116,778 | 282.4 |
| 小売業 | 119 | 770,572 | 99.3 | 18.1 | 211 | 1,450,702 | 104.2 | 17.1 | 7,198 | 39,545,620 | 93.5 | 17.6 | 15 | 88,742 | 120.7 |
| 運送倉庫業 | 11 | 282,120 | 239.1 | 6.6 | 23 | 442,620 | 152.8 | 5.2 | 914 | 9,863,702 | 92.5 | 4.4 | 0 | 0 | * |
| サービス業 | 80 | 677,080 | 96.4 | 15.9 | 139 | 1,263,296 | 101.7 | 14.9 | 4,671 | 39,135,991 | 97.5 | 17.4 | 3 | 92,022 | 143.3 |
| 不動産業 | 22 | 143,750 | 68.0 | 3.4 | 47 | 441,780 | 96.9 | 5.2 | 1,307 | 12,599,561 | 102.6 | 5.6 | 1 | 1,650 | * |
| その他 | 10 | 53,510 | 214.0 | 1.3 | 13 | 79,510 | 83.9 | 0.9 | 656 | 9,159,687 | 123.5 | 4.1 | 2 | 3,918 | * |
| 非製造業計 | 415 | 3,580,432 | 99.7 | 84.2 | 803 | 7,278,486 | 111.5 | 85.8 | 24,574 | 187,094,759 | 96.1 | 83.3 | 39 | 425,241 | 183.3 |
| 合計 | 474 | 4,251,832 | 100.7 | 100.0 | 915 | 8,480,586 | 109.3 | 100.0 | 28,991 | 224,538,856 | 95.5 | 100.0 | 42 | 432,822 | 121.2 |

市町村別保証状況

(単位:千円, %)

| | 保証承諾 | | | | | | | | 5月末保証債務残高 | | | | 代位弁済 (28年度累計) | | |
|-------|------|-----------|---------|-------|--------|-----------|---------|-------|-----------|-------------|-------|-------|------------------|---------|---------|
| | 5月中 | | | | 28年度累計 | | | | 件数 | 金額 | 前年比 | 構成比 | 件数 | 金額 | 前年比 |
| | 件数 | 金額 | 前年比 | 構成比 | 件数 | 金額 | 前年比 | 構成比 | | | | | | | |
| 秋田市 | 139 | 1,176,828 | 71.4 | 27.7 | 268 | 2,742,778 | 88.6 | 32.3 | 8,706 | 73,201,544 | 96.9 | 32.6 | 5 | 13,532 | 24.3 |
| 能代市 | 26 | 295,950 | 156.2 | 7.0 | 53 | 622,050 | 205.2 | 7.3 | 1,768 | 12,907,328 | 97.9 | 5.7 | 2 | 5,751 | 89.2 |
| 横手市 | 48 | 338,940 | 114.0 | 8.0 | 93 | 681,840 | 114.8 | 8.0 | 2,710 | 21,297,760 | 91.9 | 9.5 | 11 | 129,368 | 3,375.1 |
| 大館市 | 38 | 386,090 | 81.6 | 9.1 | 66 | 635,740 | 81.4 | 7.5 | 2,122 | 15,271,185 | 93.6 | 6.8 | 7 | 142,781 | 7,434.7 |
| 北秋田市 | 17 | 150,000 | 305.8 | 3.5 | 35 | 302,500 | 262.8 | 3.6 | 713 | 4,824,254 | 93.4 | 2.1 | 1 | 5,754 | 84.2 |
| 由利本荘市 | 28 | 166,494 | 86.2 | 3.9 | 59 | 420,380 | 100.5 | 5.0 | 2,155 | 12,940,594 | 92.4 | 5.8 | 3 | 6,969 | 14.6 |
| にかほ市 | 19 | 170,040 | 71.6 | 4.0 | 33 | 267,390 | 77.5 | 3.2 | 1,161 | 9,062,882 | 103.5 | 4.0 | 0 | 0 | * |
| 男鹿市 | 15 | 163,000 | 421.2 | 3.8 | 24 | 202,600 | 128.2 | 2.4 | 792 | 6,373,012 | 95.2 | 2.8 | 0 | 0 | * |
| 潟上市 | 15 | 227,130 | 135.0 | 5.3 | 30 | 367,830 | 157.1 | 4.3 | 792 | 5,844,347 | 100.0 | 2.6 | 1 | 584 | 9.4 |
| 湯沢市 | 27 | 194,900 | 79.9 | 4.6 | 49 | 352,388 | 85.0 | 4.2 | 1,397 | 10,965,647 | 89.8 | 4.9 | 3 | 7,581 | 5.3 |
| 大仙市 | 37 | 372,710 | 321.1 | 8.8 | 73 | 699,240 | 201.8 | 8.2 | 2,337 | 19,098,398 | 97.3 | 8.5 | 0 | 0 | * |
| 仙北市 | 18 | 210,900 | 218.3 | 5.0 | 32 | 345,600 | 183.2 | 4.1 | 890 | 6,782,699 | 94.9 | 3.0 | 3 | 49,126 | 188.9 |
| 鹿角市 | 14 | 111,100 | 108.4 | 2.6 | 25 | 176,400 | 117.8 | 2.1 | 1,076 | 8,190,587 | 93.8 | 3.6 | 6 | 71,376 | * |
| 13市計 | 441 | 3,964,082 | 102.9 | 93.2 | 840 | 7,816,736 | 109.4 | 92.2 | 26,619 | 206,760,237 | 95.5 | 92.1 | 42 | 432,822 | 144.8 |
| 小坂町 | 1 | 3,000 | 35.3 | 0.1 | 1 | 3,000 | 31.6 | 0.0 | 111 | 1,074,730 | 90.1 | 0.5 | 0 | 0 | * |
| 鹿角郡計 | 1 | 3,000 | 35.3 | 0.1 | 1 | 3,000 | 31.6 | 0.0 | 111 | 1,074,730 | 90.1 | 0.5 | 0 | 0 | * |
| 上小阿仁村 | 2 | 17,000 | 54.8 | 0.4 | 3 | 20,000 | 60.6 | 0.2 | 58 | 470,277 | 123.9 | 0.2 | 0 | 0 | * |
| 北秋田郡計 | 2 | 17,000 | 54.8 | 0.4 | 3 | 20,000 | 60.6 | 0.2 | 58 | 470,277 | 123.9 | 0.2 | 0 | 0 | * |
| 藤里町 | 1 | 2,000 | * | 0.0 | 3 | 10,700 | * | 0.1 | 78 | 304,647 | 107.6 | 0.1 | 0 | 0 | * |
| 三種町 | 7 | 83,950 | 205.1 | 2.0 | 12 | 132,350 | 158.1 | 1.6 | 476 | 3,283,468 | 95.1 | 1.5 | 0 | 0 | * |
| 八峰町 | 3 | 24,000 | 1,200.0 | 0.6 | 5 | 33,000 | 1,650.0 | 0.4 | 188 | 1,068,241 | 85.6 | 0.5 | 0 | 0 | * |
| 山本郡計 | 11 | 109,950 | 256.1 | 2.6 | 20 | 176,050 | 205.4 | 2.1 | 742 | 4,656,356 | 93.4 | 2.1 | 0 | 0 | * |
| 五城目町 | 2 | 6,200 | 35.0 | 0.1 | 4 | 11,500 | 22.7 | 0.1 | 252 | 1,873,318 | 110.0 | 0.8 | 0 | 0 | * |
| 八郎潟町 | 0 | 0 | * | * | 4 | 48,600 | 324.0 | 0.6 | 149 | 834,869 | 91.6 | 0.4 | 0 | 0 | * |
| 井川町 | 1 | 20,000 | 34.5 | 0.5 | 2 | 22,000 | 34.4 | 0.3 | 87 | 555,064 | 86.5 | 0.2 | 0 | 0 | * |
| 大潟村 | 0 | 0 | * | * | 2 | 40,000 | 36.4 | 0.5 | 38 | 763,144 | 106.1 | 0.3 | 0 | 0 | * |
| 南秋田郡計 | 3 | 26,200 | 16.8 | 0.6 | 12 | 122,100 | 51.0 | 1.4 | 526 | 4,026,395 | 101.3 | 1.8 | 0 | 0 | * |
| 美郷町 | 7 | 40,600 | 461.4 | 1.0 | 20 | 116,300 | 202.6 | 1.4 | 422 | 2,826,313 | 98.0 | 1.3 | 0 | 0 | * |
| 仙北郡計 | 7 | 40,600 | 461.4 | 1.0 | 20 | 116,300 | 202.6 | 1.4 | 422 | 2,826,313 | 98.0 | 1.3 | 0 | 0 | * |
| 羽後町 | 5 | 35,000 | 53.4 | 0.8 | 9 | 49,900 | 65.2 | 0.6 | 303 | 1,571,447 | 86.6 | 0.7 | 0 | 0 | * |
| 東成瀬村 | 1 | 5,000 | 125.0 | 0.1 | 6 | 85,500 | 342.0 | 1.0 | 60 | 548,238 | 84.0 | 0.2 | 0 | 0 | * |
| 雄勝郡計 | 6 | 40,000 | 57.6 | 0.9 | 15 | 135,400 | 133.4 | 1.6 | 363 | 2,119,685 | 85.9 | 0.9 | 0 | 0 | * |
| 県外 | 3 | 51,000 | 98.1 | 1.2 | 4 | 91,000 | 98.9 | 1.1 | 150 | 2,604,865 | 92.6 | 1.2 | 0 | 0 | * |
| 合計 | 474 | 4,251,832 | 100.7 | 100.0 | 915 | 8,480,586 | 109.3 | 100.0 | 28,991 | 224,538,856 | 95.5 | 100.0 | 42 | 432,822 | 121.2 |

事業部・支所別状況

(単位:千円, %)

| | 保証承諾 | | | | | | | | 5月末保証債務残高 | | | | 代位弁済 (28年度累計) | | |
|--------|------|-----------|-------|-------|--------|-----------|-------|-------|-----------|-------------|------|-------|------------------|---------|---------|
| | 5月中 | | | | 28年度累計 | | | | 件数 | 金額 | 前年比 | 構成比 | 件数 | 金額 | 前年比 |
| | 件数 | 金額 | 前年比 | 構成比 | 件数 | 金額 | 前年比 | 構成比 | | | | | | | |
| 秋田事業部 | 172 | 1,569,760 | 78.0 | 36.9 | 335 | 3,413,110 | 91.6 | 40.2 | 10,803 | 89,145,871 | 97.2 | 39.7 | 6 | 14,116 | 19.6 |
| 大館支所 | 74 | 693,190 | 102.5 | 16.3 | 132 | 1,163,640 | 105.6 | 13.7 | 4,112 | 30,360,819 | 94.1 | 13.5 | 14 | 219,911 | 1,145.1 |
| 能代支所 | 37 | 405,900 | 174.6 | 9.5 | 73 | 798,100 | 205.8 | 9.4 | 2,541 | 18,274,927 | 96.4 | 8.1 | 2 | 5,751 | 13.0 |
| 本荘支所 | 46 | 336,034 | 71.1 | 7.9 | 91 | 726,070 | 85.5 | 8.6 | 3,333 | 22,343,760 | 96.4 | 10.0 | 3 | 6,969 | 14.6 |
| 大曲支所 | 61 | 640,328 | 297.7 | 15.1 | 124 | 1,177,258 | 200.8 | 13.9 | 3,680 | 29,550,760 | 97.0 | 13.2 | 3 | 49,126 | 188.9 |
| 横手湯沢支所 | 84 | 606,620 | 98.8 | 14.3 | 160 | 1,202,408 | 108.0 | 14.2 | 4,522 | 34,862,719 | 90.4 | 15.5 | 14 | 136,949 | 92.4 |
| 合計 | 474 | 4,251,832 | 100.7 | 100.0 | 915 | 8,480,586 | 109.3 | 100.0 | 28,991 | 224,538,856 | 95.5 | 100.0 | 42 | 432,822 | 121.2 |

制度別保証状況

(単位:千円, %)

| | 保証承諾 | | | | | | | | 5月末保証債務残高 | | | | 代位弁済 (28年度累計) | | |
|---------------|------|-----------|-------|-------|--------|-----------|---------|-------|-----------|-------------|---------|-------|------------------|---------|-------|
| | 5月中 | | | | 28年度累計 | | | | 件数 | 金額 | 前年比 | 構成比 | 件数 | 金額 | 前年比 |
| | 件数 | 金額 | 前年比 | 構成比 | 件数 | 金額 | 前年比 | 構成比 | | | | | | | |
| 普通保証 | 10 | 293,000 | 145.3 | 6.9 | 22 | 673,530 | 173.1 | 7.9 | 557 | 12,572,914 | 137.4 | 5.6 | 1 | 4,206 | * |
| 長期安定 | 0 | 0 | * | * | 0 | 0 | * | * | 8 | 167,239 | 87.8 | 0.1 | 0 | 0 | * |
| 季節資金中元 | 0 | 0 | * | * | 0 | 0 | * | * | 0 | 0 | * | * | 0 | 0 | * |
| 季節資金年末 | 0 | 0 | * | * | 0 | 0 | * | * | 1 | 30,000 | 100.0 | 0.0 | 0 | 0 | * |
| 季節資金期末 | 0 | 0 | * | * | 0 | 0 | * | * | 0 | 0 | * | * | 0 | 0 | * |
| 長期資金 | 0 | 0 | * | * | 0 | 0 | * | * | 15 | 600,092 | 83.6 | 0.3 | 0 | 0 | * |
| 当座貸越 | 6 | 150,000 | 63.6 | 3.5 | 10 | 240,000 | 65.0 | 2.8 | 231 | 5,508,000 | 100.9 | 2.5 | 1 | 14,755 | * |
| カードローン | 20 | 112,700 | 121.2 | 2.7 | 45 | 291,200 | 101.8 | 3.4 | 757 | 4,521,745 | 105.1 | 2.0 | 0 | 0 | * |
| カードmini | 40 | 71,100 | 84.7 | 1.7 | 70 | 129,100 | 75.3 | 1.5 | 2,172 | 3,364,908 | 108.5 | 1.5 | 2 | 5,060 | 165.5 |
| 流動資産(根保証) | 3 | 45,600 | 100.0 | 1.1 | 5 | 109,600 | 100.0 | 1.3 | 20 | 594,320 | 96.9 | 0.3 | 0 | 0 | * |
| 流動資産(個別保証) | 0 | 0 | * | * | 0 | 0 | * | * | 0 | 0 | * | * | 0 | 0 | * |
| 特定社債 | 0 | 0 | * | * | 0 | 0 | * | * | 10 | 648,000 | 91.2 | 0.3 | 0 | 0 | * |
| 秋田銀行提携保証 | 3 | 28,000 | 560.0 | 0.7 | 11 | 172,400 | 3,448.0 | 2.0 | 168 | 1,993,722 | 519.9 | 0.9 | 0 | 0 | * |
| Bizこまち | 0 | 0 | * | * | 1 | 10,000 | 357.1 | 0.1 | 40 | 120,143 | 185.4 | 0.1 | 0 | 0 | * |
| 北都銀行提携保証 | 28 | 328,700 | 117.6 | 7.7 | 49 | 702,200 | 144.9 | 8.3 | 608 | 6,543,063 | 206.2 | 2.9 | 1 | 8,342 | * |
| ほくと創業 | 4 | 21,000 | * | 0.5 | 4 | 21,000 | * | 0.2 | 29 | 107,441 | 1,074.4 | 0.0 | 0 | 0 | * |
| 秋田信金提携保証 | 0 | 0 | * | * | 0 | 0 | * | * | 17 | 32,209 | 74.1 | 0.0 | 0 | 0 | * |
| あきしん創業 | 1 | 10,000 | * | 0.2 | 1 | 10,000 | * | 0.1 | 7 | 34,711 | * | * | 0 | 0 | * |
| 羽後信金提携保証 | 4 | 14,000 | 140.0 | 0.3 | 5 | 15,300 | 127.5 | 0.2 | 30 | 48,499 | 157.1 | 0.0 | 0 | 0 | * |
| 県信組提携保証 | 2 | 6,500 | 433.3 | 0.2 | 3 | 8,500 | 81.0 | 0.1 | 41 | 80,087 | 72.7 | 0.0 | 0 | 0 | * |
| 順風満帆 | 3 | 199,500 | * | 4.7 | 5 | 259,500 | * | 3.1 | 30 | 1,681,275 | * | 0.7 | 0 | 0 | * |
| その他 | 0 | 0 | * | * | 2 | 6,406 | * | 0.1 | 17 | 89,160 | 105.3 | 0.0 | 0 | 0 | * |
| 協会制度計 | 114 | 987,100 | 130.3 | 23.2 | 211 | 1,975,206 | 136.0 | 23.3 | 4,201 | 26,164,615 | 137.5 | 11.7 | 4 | 28,156 | 921.1 |
| 無担保・無保証人 | 0 | 0 | * | * | 0 | 0 | * | * | 0 | 0 | * | * | 0 | 0 | * |
| 国営安定 | 0 | 0 | * | * | 1 | 50,000 | * | 0.6 | 99 | 1,363,663 | 118.0 | 0.6 | 0 | 0 | * |
| エネルギー対策 | 0 | 0 | * | * | 0 | 0 | * | * | 0 | 0 | * | * | 0 | 0 | * |
| 海外 | 0 | 0 | * | * | 0 | 0 | * | * | 0 | 0 | * | * | 0 | 0 | * |
| 新事業・事業開拓 | 0 | 0 | * | * | 0 | 0 | * | * | 0 | 0 | * | * | 0 | 0 | * |
| 金融安定化(金融変化対応) | 0 | 0 | * | * | 0 | 0 | * | * | 4 | 23,737 | 14.4 | 0.0 | 0 | 0 | * |
| 新事業創出 | 0 | 0 | * | * | 0 | 0 | * | * | 0 | 0 | * | * | 0 | 0 | * |
| 経営革新関連 | 0 | 0 | * | * | 0 | 0 | * | * | 2 | 47,796 | 2,473.9 | 0.0 | 0 | 0 | * |
| 安定化(借換) | 0 | 0 | * | * | 0 | 0 | * | * | 5 | 72,714 | 72.6 | 0.0 | 0 | 0 | * |
| 国再挑戦 | 0 | 0 | * | * | 0 | 0 | * | * | 0 | 0 | * | * | 0 | 0 | * |
| 全国緊急 | 0 | 0 | * | * | 0 | 0 | * | * | 22 | 395,712 | 86.6 | 0.2 | 0 | 0 | * |
| 予約保証 | 0 | 0 | * | * | 0 | 0 | * | * | 0 | 0 | * | * | 0 | 0 | * |
| 事業再生円滑化 | 0 | 0 | * | * | 0 | 0 | * | * | 0 | 0 | * | * | 0 | 0 | * |
| 激甚災害(地震) | 0 | 0 | * | * | 0 | 0 | * | * | 0 | 0 | * | * | 0 | 0 | * |
| 震災緊急 | 0 | 0 | * | * | 0 | 0 | * | * | 4 | 75,532 | 86.6 | 0.0 | 0 | 0 | * |
| 経営力強化 | 0 | 0 | * | * | 0 | 0 | * | * | 26 | 777,966 | 99.3 | 0.3 | 0 | 0 | * |
| 経保GL保証 | 0 | 0 | * | * | 0 | 0 | * | * | 1 | 9,436 | 58.6 | 0.0 | 0 | 0 | * |
| その他 | 0 | 0 | * | * | 0 | 0 | * | * | 4 | 8,554 | 53.9 | 0.0 | 0 | 0 | * |
| 国制度計 | 0 | 0 | * | * | 1 | 50,000 | 67.6 | 0.6 | 167 | 2,775,110 | 99.7 | 1.2 | 0 | 0 | * |
| 事業円滑化資金(固定型) | 0 | 0 | * | * | 0 | 0 | * | * | 0 | 0 | * | * | 0 | 0 | * |
| 事業円滑化資金(変動型) | 0 | 0 | * | * | 0 | 0 | * | * | 12 | 23,849 | 18.2 | 0.0 | 1 | 1,650 | * |
| 秋田産業総合 | 0 | 0 | * | * | 0 | 0 | * | * | 0 | 0 | * | * | 0 | 0 | * |
| 新事業革新 | 0 | 0 | * | * | 0 | 0 | * | * | 0 | 0 | * | * | 0 | 0 | * |
| 新事業総合ベンチャー | 0 | 0 | * | * | 0 | 0 | * | * | 0 | 0 | * | * | 0 | 0 | * |
| 新事業総合21 | 0 | 0 | * | * | 0 | 0 | * | * | 3 | 10,399 | 26.6 | 0.0 | 0 | 0 | * |
| 新事業総合転換 | 0 | 0 | * | * | 0 | 0 | * | * | 3 | 63,323 | 83.6 | 0.0 | 0 | 0 | * |
| 公害防止設備資金 | 0 | 0 | * | * | 0 | 0 | * | * | 0 | 0 | * | * | 0 | 0 | * |
| 振興資金(固定) | 20 | 205,350 | 93.4 | 4.8 | 47 | 352,310 | 75.3 | 4.2 | 495 | 3,211,703 | 81.8 | 1.4 | 1 | 1,073 | * |
| 振興資金(変動) | 47 | 734,142 | 72.7 | 17.3 | 104 | 1,519,942 | 85.5 | 17.9 | 2,617 | 32,556,179 | 98.1 | 14.5 | 5 | 38,822 | 64.4 |
| 振興資金(小規模) | 0 | 0 | * | * | 1 | 5,000 | 147.1 | 0.1 | 49 | 133,264 | 82.6 | 0.1 | 0 | 0 | * |
| 振興資金(23年地震) | 0 | 0 | * | * | 0 | 0 | * | * | 3,317 | 24,083,196 | 77.6 | 10.7 | 5 | 68,736 | 95.5 |
| 災害復旧 | 0 | 0 | * | * | 0 | 0 | * | * | 26 | 83,187 | 65.4 | 0.0 | 0 | 0 | * |
| マル災(23地震) | 0 | 0 | * | * | 0 | 0 | * | * | 0 | 0 | * | * | 0 | 0 | * |
| 県ABL(個別保証) | 0 | 0 | * | * | 0 | 0 | * | * | 0 | 0 | * | * | 0 | 0 | * |
| 県ABL(根保証) | 2 | 26,400 | 100.0 | 0.6 | 3 | 34,400 | 130.3 | 0.4 | 26 | 366,000 | 89.0 | 0.2 | 0 | 0 | * |
| 経営安定受注減 | 14 | 178,100 | 58.9 | 4.2 | 24 | 323,100 | 78.0 | 3.8 | 590 | 7,045,870 | 113.3 | 3.1 | 2 | 43,704 | * |
| 経営安定原油対策 | 0 | 0 | * | * | 0 | 0 | * | * | 32 | 137,749 | 63.9 | 0.1 | 0 | 0 | * |
| 原油価格対策 | 0 | 0 | * | * | 0 | 0 | * | * | 584 | 3,648,429 | 69.1 | 1.6 | 3 | 28,901 | * |
| 県緊急対策 | 0 | 0 | * | * | 0 | 0 | * | * | 5,401 | 51,863,224 | 76.1 | 23.1 | 7 | 82,252 | 59.3 |
| 県取引安定 | 0 | 0 | * | * | 0 | 0 | * | * | 2 | 7,359 | 43.4 | 0.0 | 0 | 0 | * |
| 受注減小口 | 22 | 79,500 | 240.2 | 1.9 | 41 | 158,300 | 169.2 | 1.9 | 497 | 1,924,790 | 111.2 | 0.9 | 2 | 16,823 | 337.6 |
| 経営安定連倒 | 0 | 0 | * | * | 0 | 0 | * | * | 16 | 74,867 | 62.9 | 0.0 | 0 | 0 | * |
| 連倒小口 | 0 | 0 | * | * | 0 | 0 | * | * | 5 | 7,731 | 54.7 | 0.0 | 0 | 0 | * |
| 経営安定金融破綻 | 0 | 0 | * | * | 0 | 0 | * | * | 0 | 0 | * | * | 0 | 0 | * |
| 破綻小口 | 0 | 0 | * | * | 0 | 0 | * | * | 0 | 0 | * | * | 0 | 0 | * |
| 経営安定再生 | 0 | 0 | * | * | 0 | 0 | * | * | 118 | 1,600,879 | 75.6 | 0.7 | 0 | 0 | * |
| 経営安定電気 | 0 | 0 | * | * | 0 | 0 | * | * | 2 | 22,749 | 88.3 | 0.0 | 0 | 0 | * |
| 経営安定消費税 | 0 | 0 | * | * | 0 | 0 | * | * | 44 | 505,988 | 66.1 | 0.2 | 0 | 0 | * |
| 経営安定消費強化 | 2 | 50,000 | 96.2 | 1.2 | 4 | 110,000 | 77.5 | 1.3 | 21 | 354,452 | 158.4 | 0.2 | 0 | 0 | * |
| 経営安定借換 | 9 | 168,000 | 161.5 | 4.0 | 10 | 177,500 | 130.0 | 2.1 | 127 | 1,914,264 | 207.4 | 0.9 | 0 | 0 | * |
| 経営安定借換 | 1 | 27,500 | * | 0.6 | 1 | 27,500 | * | 0.3 | 26 | 481,346 | 102.8 | 0.2 | 0 | 0 | * |
| 県創業支援 | 5 | 23,800 | 841.0 | 0.6 | 6 | 30,200 | 115.6 | 0.4 | 406 | 1,101,470 | 85.1 | 0.5 | 1 | 11,111 | 253.7 |
| 新事業事業革新 | 0 | 0 | * | * | 1 | 49,000 | 122.5 | 0.6 | 97 | 1,571,568 | 81.8 | 0.7 | 1 | 45,440 | * |
| 新事業総合あきた | 0 | 0 | * | * | 0 | 0 | * | * | 4 | 29,965 | 55.3 | 0.0 | 0 | 0 | * |
| 新事業フェニックス | 0 | 0 | * | * | 0 | 0 | * | * | 5 | 274,309 | 90.0 | 0.1 | 0 | 0 | * |
| 事業再生資金 | 0 | 0 | * | * | 0 | 0 | * | * | 0 | 0 | * | * | 0 | 0 | * |
| 再起支援資金 | 0 | 0 | * | * | 0 | 0 | * | * | 0 | 0 | * | * | 1 | 2,502 | * |
| 事業承継資金 | 2 | 83,000 | * | 2.0 | 2 | 83,000 | 415.0 | 1.0 | 35 | 392,833 | 104.4 | 0.2 | 0 | 0 | * |
| 県アスベスト | 0 | 0 | * | * | 0 | 0 | * | * | 1 | 310 | 15.4 | 0.0 | 0 | 0 | * |
| 県小口 | 5 | 8,740 | 208.1 | 0.2 | 8 | 12,840 | 101.9 | 0.2 | 103 | 234,474 | 107.0 | 0.1 | 0 | 0 | * |
| 県アグリ | 0 | 0 | * | * | 1 | 4,000 | * | 0.0 | 51 | 219,019 | 83.1 | 0.1 | 0 | 0 | * |
| エネルギー設備 | 0 | 0 | * | * | 0 | 0 | * | * | 38 | 3,546,031 | 161.1 | 1.6 | 0 | 0 | * |
| エネルギー支援 | 0 | 0 | * | * | 0 | 0 | * | * | 16 | 970,776 | 158.2 | 0.4 | 0 | 0 | * |
| その他 | 0 | 0 | * | * | 0 | 0 | * | * | 0 | 0 | * | * | 0 | 0 | * |
| 県制度計 | 129 | 1,584,532 | 89.8 | 37.3 | 253 | 2,887,092 | 90.7 | 34.0 | 14,769 | 138,461,553 | 85.1 | 61.7 | 29 | 339,013 | 112.1 |
| 市町村制度計 | 221 | 1,387,200 | 94.1 | 32.6 | 428 | 2,894,758 | 108.7 | 34.1 | 9,297 | 44,564,664 | 107.5 | 19.8 | 8 | 61,447 | 165.4 |
| 商工貯蓄共済 | 0 | 0 | * | * | 0 | 0 | * | * | 0 | 0 | * | * | 0 | 0 | * |
| 合計 | 474 | 4,251,832 | 100.7 | 100.0 | 915 | 8,480,586 | 109.3 | 100.0 | 28,991 | 224,538,856 | 95.5 | 100.0 | 42 | 432,822 | 121.2 |

市町村制度別保証状況

(単位:千円,%)

| | 保証承諾 | | | | | | | | 5月末保証債務残高 | | | | 代位弁済 (28年度累計) | | |
|------------|------|-----------|---------|-------|--------|-----------|-------|-------|-----------|------------|-------|-------|------------------|--------|---------|
| | 5月中 | | | | 28年度累計 | | | | 件数 | 金額 | 前年比 | 構成比 | 件数 | 金額 | 前年比 |
| | 件数 | 金額 | 前年比 | 構成比 | 件数 | 金額 | 前年比 | 構成比 | | | | | | | |
| 秋田市 | 23 | 237,840 | 70.1 | 17.1 | 52 | 605,790 | 112.5 | 20.9 | 1,043 | 7,613,481 | 117.3 | 17.1 | 0 | 0 | * |
| 秋田市(設備) | 0 | 0 | * | * | 0 | 0 | * | * | 13 | 150,358 | 117.2 | 0.3 | 0 | 0 | * |
| 秋田市(空き店舗) | 0 | 0 | * | * | 0 | 0 | * | * | 1 | 4,500 | 88.2 | 0.0 | 0 | 0 | * |
| 秋田市(商業施設) | 0 | 0 | * | * | 0 | 0 | * | * | 4 | 165,720 | 70.0 | 0.4 | 0 | 0 | * |
| 秋田市(創業) | 1 | 6,000 | 260.9 | 0.4 | 3 | 28,000 | 301.1 | 1.0 | 105 | 429,033 | 111.5 | 1.0 | 0 | 0 | * |
| 秋田市(新分野) | 0 | 0 | * | * | 0 | 0 | * | * | 1 | 8,506 | 89.5 | 0.0 | 0 | 0 | * |
| 秋田市小口 | 18 | 48,200 | 78.4 | 3.5 | 31 | 96,860 | 78.4 | 3.3 | 699 | 1,634,154 | 124.3 | 3.7 | 1 | 2,845 | 149.2 |
| 秋田市中心空き店舗 | 0 | 0 | * | * | 0 | 0 | * | * | 5 | 32,497 | 263.7 | 0.1 | 0 | 0 | * |
| 秋田市中心市街地設備 | 0 | 0 | * | * | 0 | 0 | * | * | 9 | 141,786 | 84.9 | 0.3 | 0 | 0 | * |
| 男鹿市 | 2 | 17,500 | 84.5 | 1.3 | 3 | 19,900 | 32.7 | 0.7 | 127 | 733,668 | 100.4 | 1.6 | 0 | 0 | * |
| 男小口 | 0 | 0 | * | * | 1 | 5,000 | 84.0 | 0.2 | 61 | 148,499 | 132.2 | 0.3 | 0 | 0 | * |
| 潟上市 | 0 | 0 | * | * | 0 | 0 | * | * | 68 | 317,389 | 103.2 | 0.7 | 0 | 0 | * |
| 潟上市小口 | 3 | 10,830 | 45.7 | 0.8 | 5 | 25,830 | 81.5 | 0.9 | 63 | 175,448 | 116.7 | 0.4 | 0 | 0 | * |
| 五城目町 | 0 | 0 | * | * | 1 | 1,300 | 8.7 | 0.0 | 47 | 139,157 | 92.5 | 0.3 | 0 | 0 | * |
| マル五小口 | 1 | 1,200 | 12.6 | 0.1 | 2 | 5,200 | 32.7 | 0.2 | 34 | 64,912 | 107.0 | 0.1 | 0 | 0 | * |
| 八郎潟町 | 0 | 0 | * | * | 1 | 2,700 | 38.6 | 0.1 | 32 | 113,591 | 108.6 | 0.3 | 0 | 0 | * |
| マル八小口 | 0 | 0 | * | * | 1 | 4,500 | * | 0.2 | 8 | 18,827 | 101.3 | 0.0 | 0 | 0 | * |
| 井川町 | 0 | 0 | * | * | 0 | 0 | * | * | 6 | 27,928 | 89.1 | 0.1 | 0 | 0 | * |
| マル井小口 | 0 | 0 | * | * | 0 | 0 | * | * | 8 | 18,800 | 93.8 | 0.0 | 0 | 0 | * |
| 大潟村 | 0 | 0 | * | * | 0 | 0 | * | * | 1 | 100 | 17.2 | 0.0 | 0 | 0 | * |
| 潟小口 | 0 | 0 | * | * | 1 | 10,000 | * | 0.3 | 1 | 10,000 | * | 0.0 | 0 | 0 | * |
| 秋田事業部管内計 | 48 | 321,570 | 66.9 | 23.2 | 101 | 805,080 | 94.9 | 27.8 | 2,336 | 11,948,351 | 114.5 | 26.8 | 1 | 2,845 | 27.7 |
| 大館市 | 15 | 124,090 | 38.3 | 8.9 | 31 | 299,940 | 60.3 | 10.4 | 399 | 2,627,073 | 194.5 | 5.9 | 0 | 0 | * |
| 大館市小口 | 7 | 13,200 | 53.1 | 1.0 | 11 | 24,000 | 58.6 | 0.8 | 210 | 465,453 | 120.7 | 1.0 | 0 | 0 | * |
| 大館市(機械) | 2 | 9,000 | 94.7 | 0.6 | 2 | 9,000 | 66.9 | 0.3 | 129 | 221,351 | 95.5 | 0.5 | 0 | 0 | * |
| 鹿角市 | 3 | 37,200 | 153.7 | 2.7 | 5 | 62,200 | 122.5 | 2.1 | 177 | 1,000,112 | 101.5 | 2.2 | 1 | 12,436 | * |
| 鹿小口 | 3 | 16,900 | 1,300.0 | 1.2 | 6 | 31,400 | 360.9 | 1.1 | 108 | 253,084 | 106.6 | 0.6 | 0 | 0 | * |
| 北秋田市 | 10 | 61,500 | 236.5 | 4.4 | 20 | 131,500 | 274.8 | 4.5 | 177 | 707,222 | 123.4 | 1.6 | 1 | 5,754 | 117.2 |
| 小坂町 | 1 | 3,000 | 35.3 | 0.2 | 1 | 3,000 | 35.3 | 0.1 | 22 | 82,226 | 84.7 | 0.2 | 0 | 0 | * |
| 上小阿仁村 | 1 | 7,000 | * | 0.5 | 1 | 7,000 | * | 0.2 | 15 | 47,133 | 109.1 | 0.1 | 0 | 0 | * |
| 大館支所管内計 | 42 | 271,890 | 65.0 | 19.6 | 77 | 568,040 | 85.1 | 19.6 | 1,237 | 5,403,653 | 138.4 | 12.1 | 2 | 18,190 | 370.5 |
| 能代市※ | 0 | 0 | * | * | 0 | 0 | * | * | 0 | 0 | * | * | 0 | 0 | * |
| 能代市 | 7 | 64,650 | 126.3 | 4.7 | 13 | 117,250 | 169.4 | 4.1 | 284 | 1,608,615 | 102.7 | 3.6 | 1 | 4,069 | 105.5 |
| 能小口 | 6 | 14,700 | 55.5 | 1.1 | 14 | 31,700 | 91.9 | 1.1 | 334 | 673,402 | 106.7 | 1.5 | 0 | 0 | * |
| 二ツ井町※ | 0 | 0 | * | * | 0 | 0 | * | * | 0 | 0 | * | * | 0 | 0 | * |
| 藤里町 | 0 | 0 | * | * | 1 | 7,000 | * | 0.2 | 12 | 56,608 | 132.4 | 0.1 | 0 | 0 | * |
| 藤小口 | 0 | 0 | * | * | 1 | 1,700 | * | 0.1 | 22 | 33,338 | 82.7 | 0.1 | 0 | 0 | * |
| 三種町 | 3 | 35,000 | 175.0 | 2.5 | 5 | 60,000 | 222.2 | 2.1 | 116 | 865,614 | 102.0 | 1.9 | 0 | 0 | * |
| 三小口 | 2 | 6,950 | * | 0.5 | 2 | 6,950 | 20.9 | 0.2 | 95 | 201,116 | 98.2 | 0.5 | 0 | 0 | * |
| 八峰町 | 2 | 14,000 | * | 1.0 | 2 | 14,000 | * | 0.5 | 28 | 134,006 | 106.5 | 0.3 | 0 | 0 | * |
| ぶな小口 | 1 | 10,000 | 500.0 | 0.7 | 1 | 10,000 | 500.0 | 0.3 | 52 | 109,804 | 79.5 | 0.2 | 0 | 0 | * |
| 能代支所管内計 | 21 | 145,300 | 145.7 | 10.5 | 39 | 248,600 | 149.8 | 8.6 | 943 | 3,682,503 | 102.3 | 8.3 | 1 | 4,069 | 53.0 |
| 由利本荘市 | 5 | 34,500 | 113.2 | 2.5 | 12 | 61,350 | 167.0 | 2.1 | 224 | 915,143 | 105.1 | 2.1 | 0 | 0 | * |
| 由利本荘小口 | 3 | 10,750 | 48.9 | 0.8 | 9 | 24,750 | 69.1 | 0.9 | 272 | 473,222 | 101.7 | 1.1 | 1 | 4,495 | * |
| 由利本荘特例 | 2 | 11,200 | 282.1 | 0.8 | 4 | 18,680 | 238.3 | 0.6 | 123 | 423,196 | 110.6 | 0.9 | 0 | 0 | * |
| にかほ市 | 6 | 38,840 | 46.8 | 2.8 | 9 | 67,390 | 64.3 | 2.3 | 258 | 1,632,545 | 101.7 | 3.7 | 0 | 0 | * |
| 仁小口 | 7 | 31,200 | 243.8 | 2.2 | 10 | 39,300 | 94.8 | 1.4 | 221 | 470,353 | 102.6 | 1.1 | 0 | 0 | * |
| 本荘支所管内計 | 23 | 126,490 | 83.1 | 9.1 | 44 | 211,470 | 93.3 | 7.3 | 1,098 | 3,914,459 | 103.5 | 8.8 | 1 | 4,495 | 261.3 |
| 大仙市 | 10 | 94,250 | 357.0 | 6.8 | 22 | 187,850 | 188.2 | 6.5 | 677 | 5,472,393 | 99.7 | 12.3 | 0 | 0 | * |
| 仙小口 | 10 | 29,260 | 121.5 | 2.1 | 18 | 66,190 | 166.4 | 2.3 | 437 | 957,525 | 97.7 | 2.1 | 0 | 0 | * |
| 仙北市 | 7 | 50,500 | 247.2 | 3.6 | 14 | 115,000 | 334.0 | 4.0 | 172 | 885,280 | 131.1 | 2.0 | 0 | 0 | * |
| セ小口 | 5 | 20,400 | 345.8 | 1.5 | 9 | 35,600 | 139.1 | 1.2 | 145 | 336,398 | 119.7 | 0.8 | 0 | 0 | * |
| 美郷町 | 0 | 0 | * | * | 7 | 51,200 | 243.8 | 1.8 | 86 | 677,549 | 113.2 | 1.5 | 0 | 0 | * |
| 美小口 | 5 | 15,820 | 179.8 | 1.1 | 7 | 19,320 | 144.2 | 0.7 | 133 | 280,387 | 92.3 | 0.6 | 0 | 0 | * |
| 大曲支所管内計 | 37 | 210,230 | 245.6 | 15.2 | 77 | 475,160 | 203.0 | 16.4 | 1,650 | 8,609,532 | 103.4 | 19.3 | 0 | 0 | * |
| 横手市 | 20 | 176,550 | 190.5 | 12.7 | 35 | 315,750 | 121.9 | 10.9 | 800 | 6,525,082 | 97.0 | 14.6 | 2 | 29,335 | 4,312.4 |
| 横小口 | 16 | 68,770 | 125.0 | 5.0 | 23 | 92,270 | 99.3 | 3.2 | 657 | 1,787,085 | 97.5 | 4.0 | 0 | 0 | * |
| 湯沢市 | 9 | 59,100 | 93.1 | 4.3 | 17 | 152,456 | 121.5 | 5.3 | 286 | 1,962,790 | 90.6 | 4.4 | 1 | 2,512 | * |
| 炒小口 | 5 | 7,300 | 26.7 | 0.5 | 13 | 21,432 | 49.8 | 0.7 | 251 | 586,648 | 106.7 | 1.3 | 0 | 0 | * |
| 羽後町 | 0 | 0 | * | * | 0 | 0 | * | * | 16 | 36,833 | 76.8 | 0.1 | 0 | 0 | * |
| 東成瀬村 | 0 | 0 | * | * | 1 | 2,000 | * | 0.1 | 12 | 68,510 | 115.0 | 0.2 | 0 | 0 | * |
| 東小口 | 0 | 0 | * | * | 1 | 2,500 | 250.0 | 0.1 | 11 | 39,217 | 195.0 | 0.1 | 0 | 0 | * |
| 横手湯沢支所管内計 | 50 | 311,720 | 130.7 | 22.5 | 90 | 586,408 | 112.4 | 20.3 | 2,033 | 11,006,166 | 96.5 | 24.7 | 3 | 31,847 | 830.9 |
| 合計 | 221 | 1,387,200 | 94.1 | 100.0 | 428 | 2,894,758 | 108.7 | 100.0 | 9,297 | 44,564,664 | 107.5 | 100.0 | 8 | 61,447 | 165.4 |

セーフティネット保証状況

①金融機関別

(単位:千円, %)

| | 保 証 承 諾 | | | | | | 保 証 承 諾 累 計 | | | | | |
|-----------|---------|-----------|-------|--------------|---------|------|-------------|-----------|-------|--------------|---------|------|
| | 5月保証承諾 | | | 内セーフティネット保証分 | | | 28年度保証承諾累計 | | | 内セーフティネット保証分 | | |
| | 件数 | 金額 | 構成比 | 件数 | 金額 | 構成比 | 件数 | 金額 | 構成比 | 件数 | 金額 | 構成比 |
| みずほ銀行 | 1 | 30,000 | 0.7 | 0 | 0 | * | 2 | 70,000 | 0.8 | 0 | 0 | * |
| 三菱東京UFJ銀行 | 0 | 0 | * | 0 | 0 | * | 0 | 0 | * | 0 | 0 | * |
| (都市銀行計) | 1 | 30,000 | 0.7 | 0 | 0 | * | 2 | 70,000 | 0.8 | 0 | 0 | * |
| 秋田銀行 | 202 | 1,856,248 | 43.7 | 4 | 74,000 | 4.0 | 363 | 3,430,084 | 40.4 | 8 | 121,600 | 3.5 |
| 北都銀行 | 150 | 1,612,840 | 37.9 | 2 | 32,000 | 2.0 | 306 | 3,567,152 | 42.1 | 4 | 132,000 | 3.7 |
| 荘内銀行 | 1 | 20,000 | 0.5 | 0 | 0 | * | 1 | 20,000 | 0.2 | 0 | 0 | * |
| 青森銀行 | 0 | 0 | * | 0 | 0 | * | 1 | 940 | 0.0 | 0 | 0 | * |
| 山形銀行 | 1 | 10,000 | 0.2 | 0 | 0 | * | 2 | 25,000 | 0.3 | 1 | 15,000 | 60.0 |
| 東北銀行 | 0 | 0 | * | 0 | 0 | * | 4 | 30,000 | 0.4 | 1 | 7,000 | 23.3 |
| 七十七銀行 | 0 | 0 | * | 0 | 0 | * | 0 | 0 | * | 0 | 0 | * |
| 岩手銀行 | 0 | 0 | * | 0 | 0 | * | 0 | 0 | * | 0 | 0 | * |
| みちのく銀行 | 4 | 32,500 | 0.8 | 0 | 0 | * | 4 | 32,500 | 0.4 | 0 | 0 | * |
| (地方銀行計) | 358 | 3,531,588 | 83.1 | 6 | 106,000 | 3.0 | 681 | 7,105,676 | 83.8 | 14 | 275,600 | 3.9 |
| 北日本銀行 | 2 | 5,780 | 0.1 | 0 | 0 | * | 5 | 14,780 | 0.2 | 0 | 0 | * |
| きらやか銀行 | 4 | 17,544 | 0.4 | 0 | 0 | * | 10 | 32,780 | 0.4 | 0 | 0 | * |
| (第二地方銀行計) | 6 | 23,324 | 0.5 | 0 | 0 | * | 15 | 47,560 | 0.6 | 0 | 0 | * |
| 秋田信用金庫 | 23 | 144,040 | 3.4 | 0 | 0 | * | 50 | 298,880 | 3.5 | 2 | 20,000 | 6.7 |
| 羽後信用金庫 | 46 | 241,080 | 5.7 | 0 | 0 | * | 95 | 471,180 | 5.6 | 3 | 32,600 | 6.9 |
| (信用金庫計) | 69 | 385,120 | 9.1 | 0 | 0 | * | 145 | 770,060 | 9.1 | 5 | 52,600 | 6.8 |
| 秋田県信用組合 | 40 | 281,800 | 6.6 | 2 | 30,000 | 10.6 | 72 | 487,290 | 5.7 | 2 | 30,000 | 6.2 |
| (信用組合計) | 40 | 281,800 | 6.6 | 2 | 30,000 | 10.6 | 72 | 487,290 | 5.7 | 2 | 30,000 | 6.2 |
| 商工組合中央金庫 | 0 | 0 | * | 0 | 0 | * | 0 | 0 | * | 0 | 0 | * |
| かづの農協 | 0 | 0 | * | 0 | 0 | * | 0 | 0 | * | 0 | 0 | * |
| (その他計) | 0 | 0 | * | 0 | 0 | * | 0 | 0 | * | 0 | 0 | * |
| 合 計 | 474 | 4,251,832 | 100.0 | 8 | 136,000 | 3.2 | 915 | 8,480,586 | 100.0 | 21 | 358,200 | 4.2 |

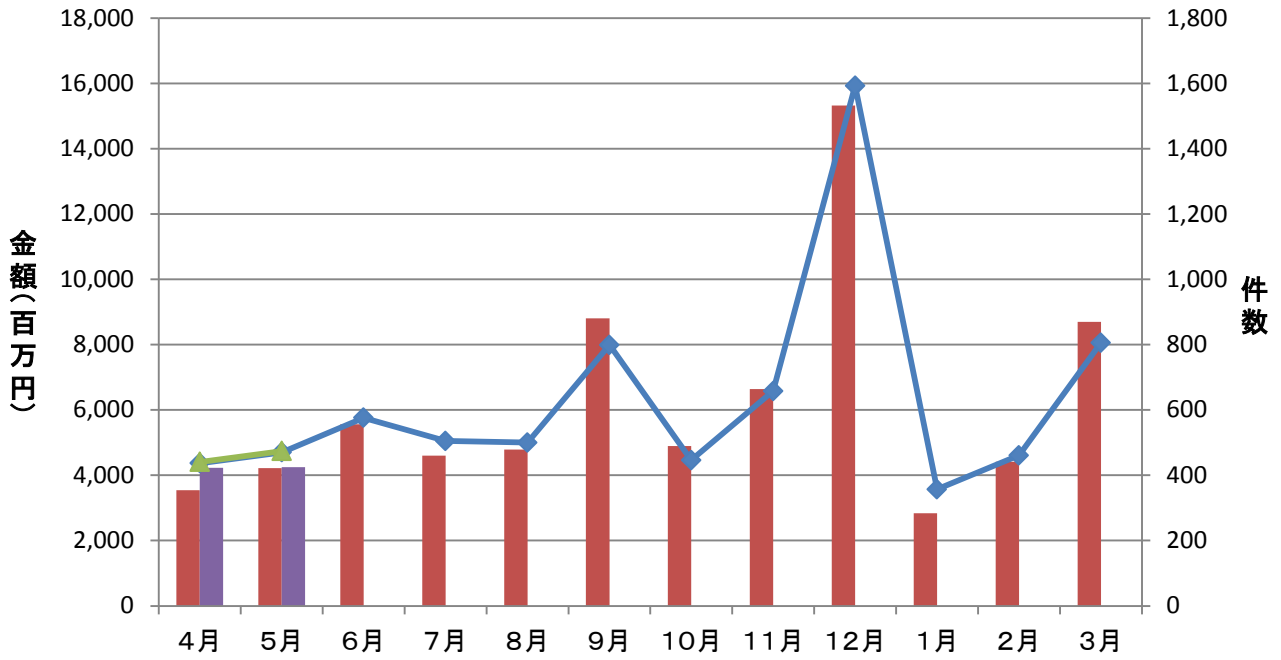
②市町村別

(単位:千円, %)

| | 保 証 承 諾 | | | | | | 保 証 承 諾 累 計 | | | | | |
|-------|---------|-----------|-------|--------------|---------|------|-------------|-----------|-------|--------------|---------|------|
| | 5月保証承諾 | | | 内セーフティネット保証分 | | | 28年度保証承諾累計 | | | 内セーフティネット保証分 | | |
| | 件数 | 金額 | 構成比 | 件数 | 金額 | 構成比 | 件数 | 金額 | 構成比 | 件数 | 金額 | 構成比 |
| 秋田市 | 139 | 1,176,828 | 27.7 | 1 | 30,000 | 2.5 | 268 | 2,742,778 | 32.3 | 6 | 167,600 | 6.1 |
| 能代市 | 26 | 295,950 | 7.0 | 0 | 0 | * | 53 | 622,050 | 7.3 | 0 | 0 | * |
| 横手市 | 48 | 338,940 | 8.0 | 0 | 0 | * | 93 | 681,840 | 8.0 | 0 | 0 | * |
| 大館市 | 38 | 386,090 | 9.1 | 1 | 20,000 | 5.2 | 66 | 635,740 | 7.5 | 1 | 20,000 | 3.1 |
| 北秋田市 | 17 | 150,000 | 3.5 | 1 | 5,000 | 3.3 | 35 | 302,500 | 3.6 | 2 | 10,000 | 3.3 |
| 由利本荘市 | 28 | 166,494 | 3.9 | 1 | 9,000 | 5.4 | 59 | 420,380 | 5.0 | 4 | 48,600 | 11.6 |
| にかほ市 | 19 | 170,040 | 4.0 | 0 | 0 | * | 33 | 267,390 | 3.2 | 0 | 0 | * |
| 男鹿市 | 15 | 163,000 | 3.8 | 1 | 30,000 | 18.4 | 24 | 202,600 | 2.4 | 2 | 40,000 | 19.7 |
| 潟上市 | 15 | 227,130 | 5.3 | 1 | 10,000 | 4.4 | 30 | 367,830 | 4.3 | 1 | 10,000 | 2.7 |
| 湯沢市 | 27 | 194,900 | 4.6 | 1 | 2,000 | 1.0 | 49 | 352,388 | 4.2 | 3 | 25,000 | 7.1 |
| 大仙市 | 37 | 372,710 | 8.8 | 0 | 0 | * | 73 | 699,240 | 8.2 | 0 | 0 | * |
| 仙北市 | 18 | 210,900 | 5.0 | 0 | 0 | * | 32 | 345,600 | 4.1 | 0 | 0 | * |
| 鹿角市 | 14 | 111,100 | 2.6 | 1 | 30,000 | 27.0 | 25 | 176,400 | 2.1 | 2 | 37,000 | 21.0 |
| 13市計 | 441 | 3,964,082 | 93.2 | 8 | 136,000 | 3.4 | 840 | 7,816,736 | 92.2 | 21 | 358,200 | 4.6 |
| 小坂町 | 1 | 3,000 | 0.1 | 0 | 0 | * | 1 | 3,000 | 0.0 | 0 | 0 | * |
| 鹿角郡計 | 1 | 3,000 | 0.1 | 0 | 0 | * | 1 | 3,000 | 0.0 | 0 | 0 | * |
| 上小阿仁村 | 2 | 17,000 | 0.4 | 0 | 0 | * | 3 | 20,000 | 0.2 | 0 | 0 | * |
| 北秋田郡計 | 2 | 17,000 | 0.4 | 0 | 0 | * | 3 | 20,000 | 0.2 | 0 | 0 | * |
| 藤里町 | 1 | 2,000 | 0.0 | 0 | 0 | * | 3 | 10,700 | 0.1 | 0 | 0 | * |
| 三種町 | 7 | 83,950 | 2.0 | 0 | 0 | * | 12 | 132,350 | 1.6 | 0 | 0 | * |
| 八峰町 | 3 | 24,000 | 0.6 | 0 | 0 | * | 5 | 33,000 | 0.4 | 0 | 0 | * |
| 山本郡計 | 11 | 109,950 | 2.6 | 0 | 0 | * | 20 | 176,050 | 2.1 | 0 | 0 | * |
| 五城目町 | 2 | 6,200 | 0.1 | 0 | 0 | * | 4 | 11,500 | 0.1 | 0 | 0 | * |
| 八郎潟町 | 0 | 0 | * | 0 | 0 | * | 4 | 48,600 | 0.6 | 0 | 0 | * |
| 井川町 | 1 | 20,000 | 0.5 | 0 | 0 | * | 2 | 22,000 | 0.3 | 0 | 0 | * |
| 大潟村 | 0 | 0 | * | 0 | 0 | * | 2 | 40,000 | 0.5 | 0 | 0 | * |
| 南秋田郡計 | 3 | 26,200 | 0.6 | 0 | 0 | * | 12 | 122,100 | 1.4 | 0 | 0 | * |
| 美郷町 | 7 | 40,600 | 1.0 | 0 | 0 | * | 20 | 116,300 | 1.4 | 0 | 0 | * |
| 仙北郡計 | 7 | 40,600 | 1.0 | 0 | 0 | * | 20 | 116,300 | 1.4 | 0 | 0 | * |
| 羽後町 | 5 | 35,000 | 0.8 | 0 | 0 | * | 9 | 49,900 | 0.6 | 0 | 0 | * |
| 東成瀬村 | 1 | 5,000 | 0.1 | 0 | 0 | * | 6 | 85,500 | 1.0 | 0 | 0 | * |
| 雄勝郡計 | 6 | 40,000 | 0.9 | 0 | 0 | * | 15 | 135,400 | 1.6 | 0 | 0 | * |
| 県外 | 3 | 51,000 | 1.2 | 0 | 0 | * | 4 | 91,000 | 1.1 | 0 | 0 | * |
| 合 計 | 474 | 4,251,832 | 100.0 | 8 | 136,000 | 3.2 | 915 | 8,480,586 | 100.0 | 21 | 358,200 | 4.2 |

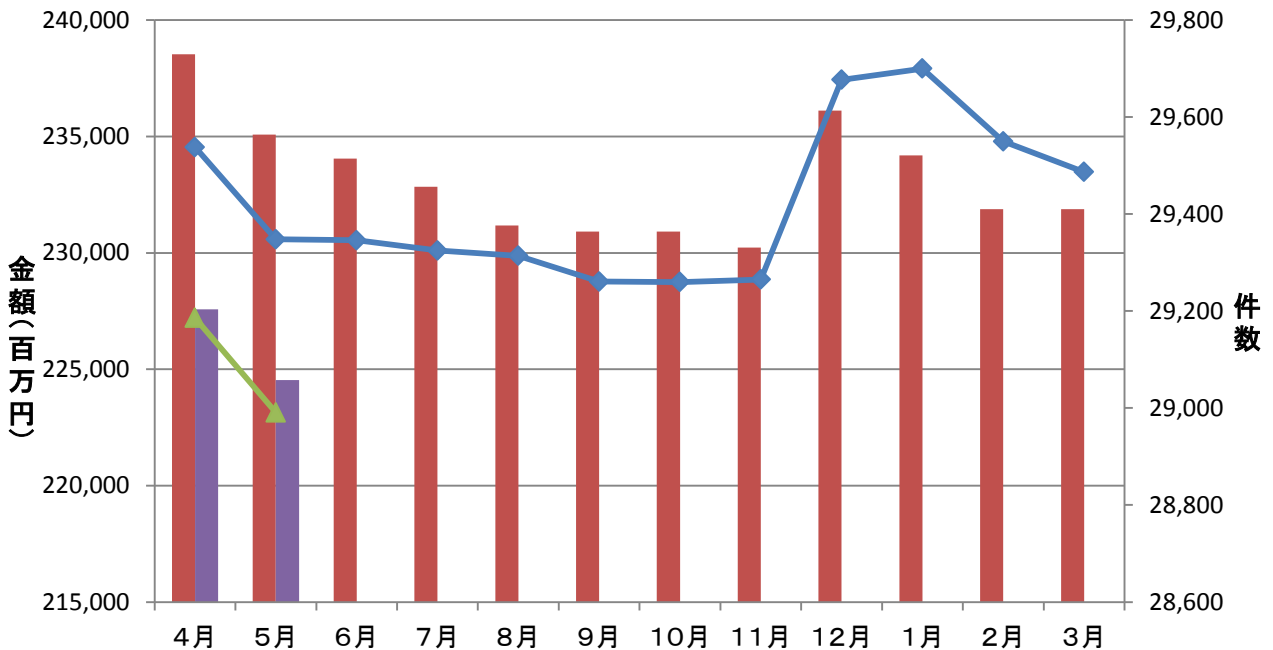
保証承諾実績

■ 平成27年度承諾金額 ■ 平成28年度承諾金額 ◆ 平成27年度承諾件数 ▲ 平成28年度承諾件数



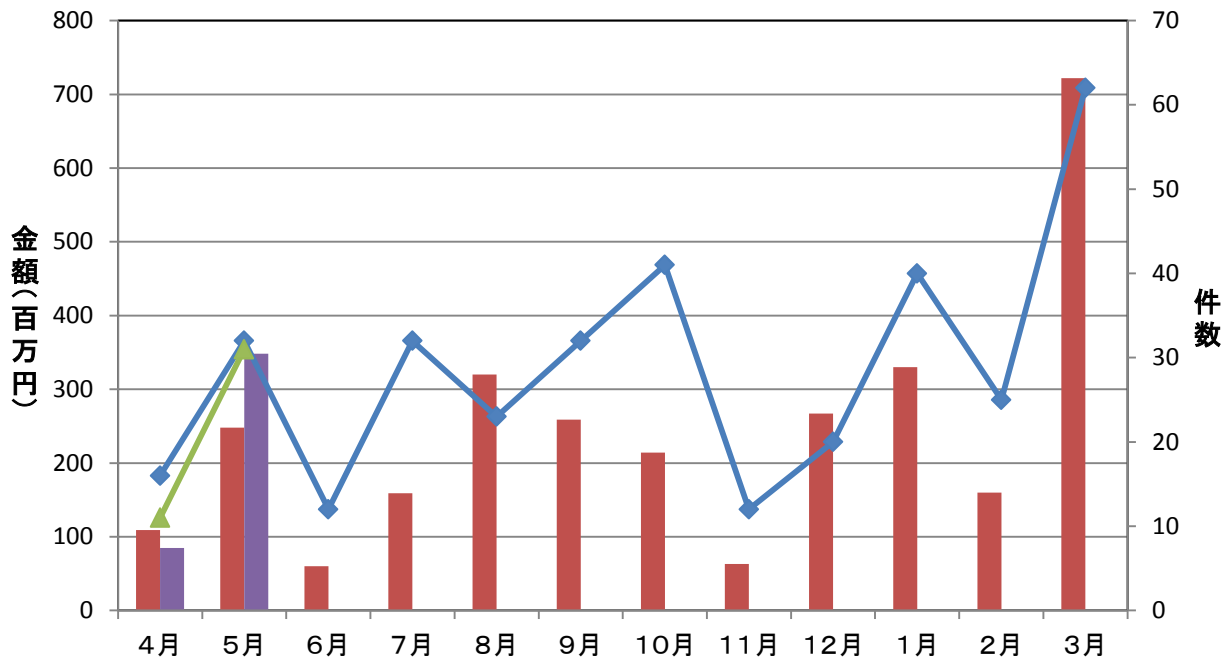
保証債務残高実績

■ 平成27年度残高 ■ 平成28年度残高 ◆ 平成27年度残高件数 ▲ 平成28年度残高件数



代位弁済実績

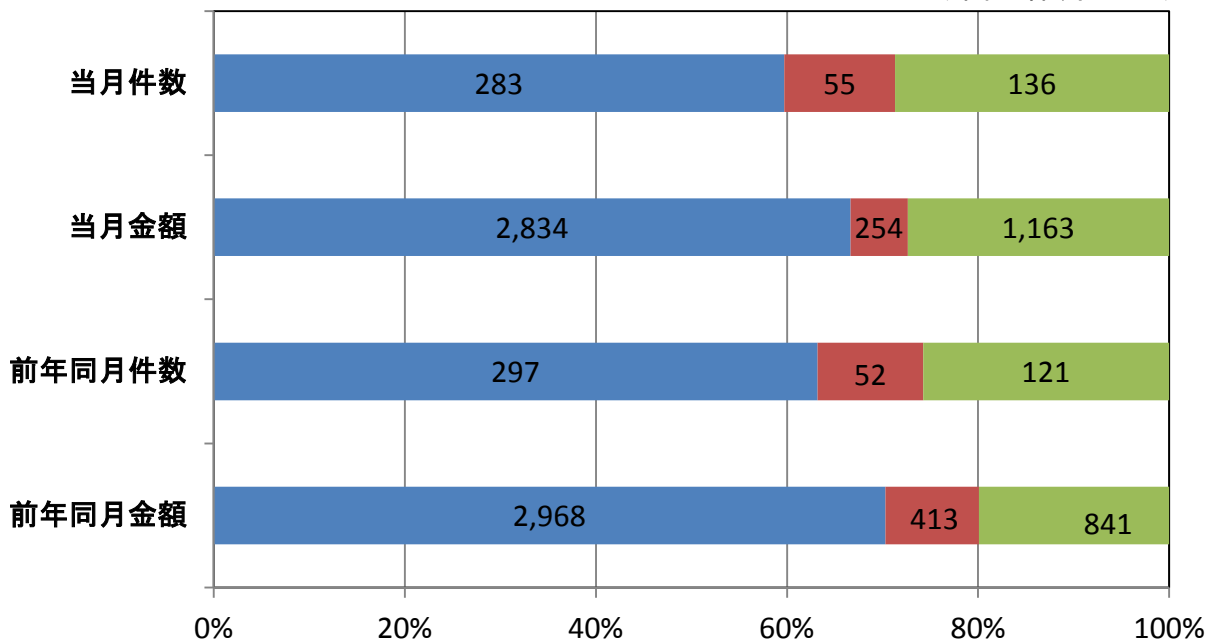
■ 平成27年度代弁金額 ■ 平成28年度代弁金額 ◆ 平成27年度代弁件数 ▲ 平成28年度代弁件数



資金使途別保証承諾実績

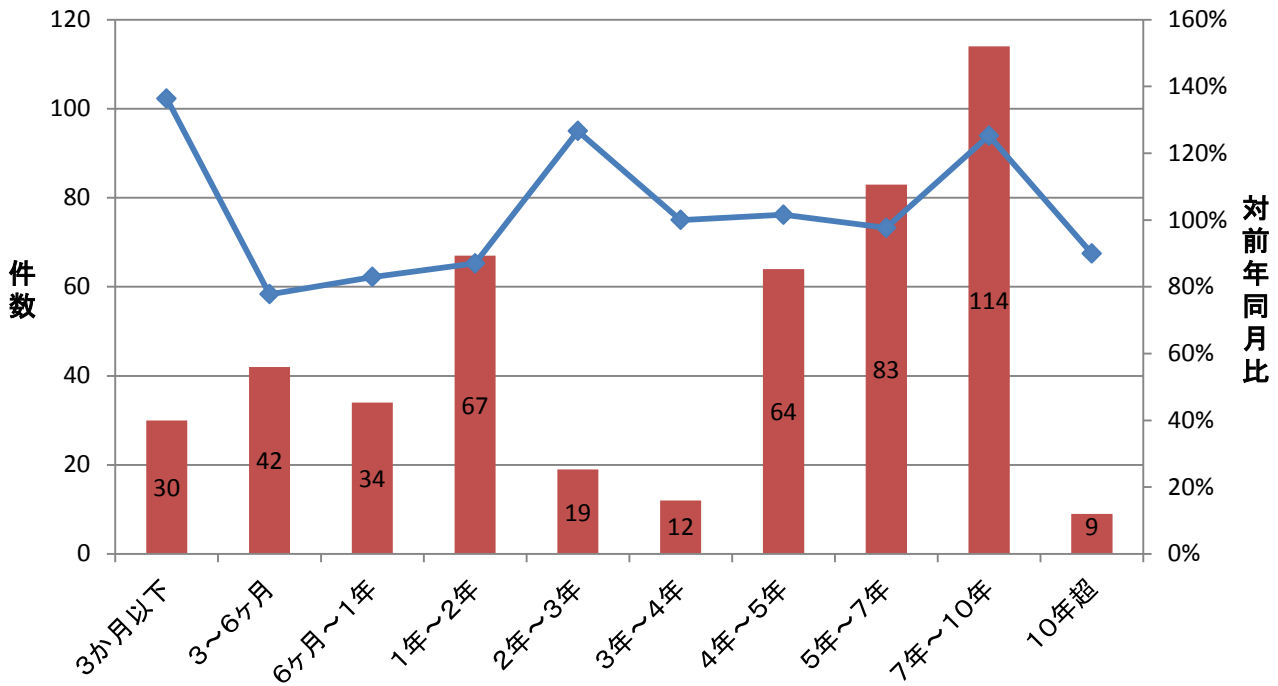
■ 運転資金 ■ 設備資金 ■ 運転設備資金

(単位: 件、百万円)



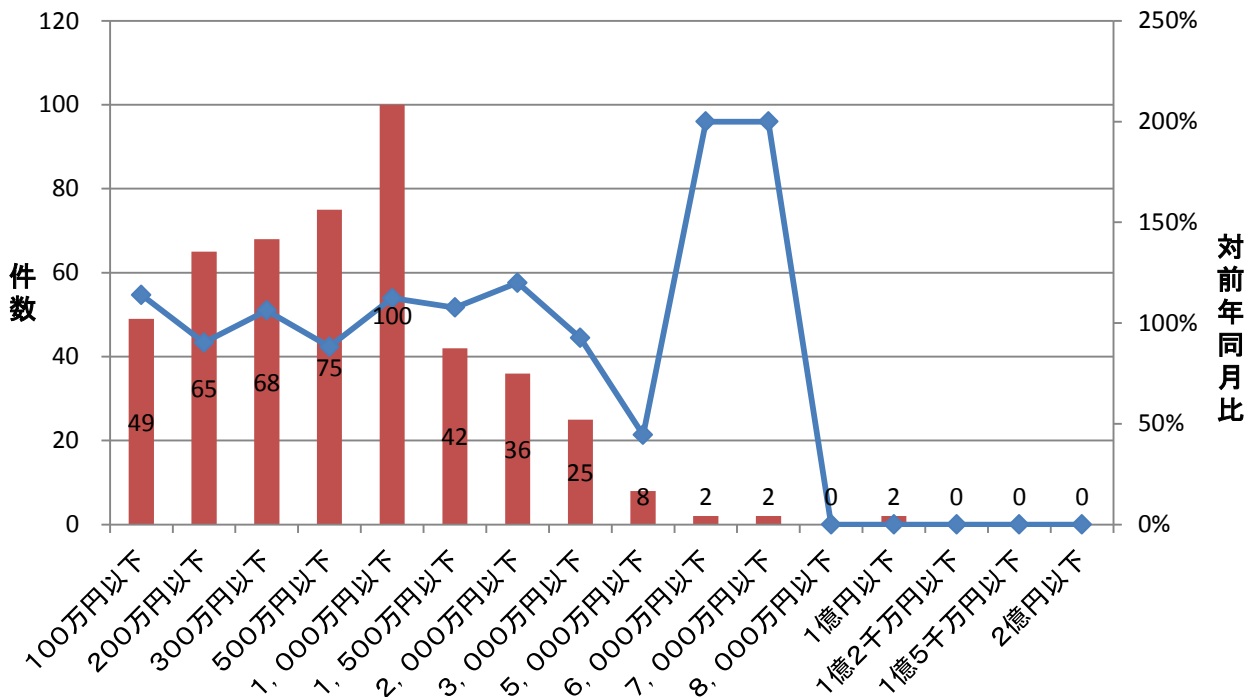
期間別保証承諾実績

■ 件数(当月) ◆ 対前年同月比



金額別保証承諾実績

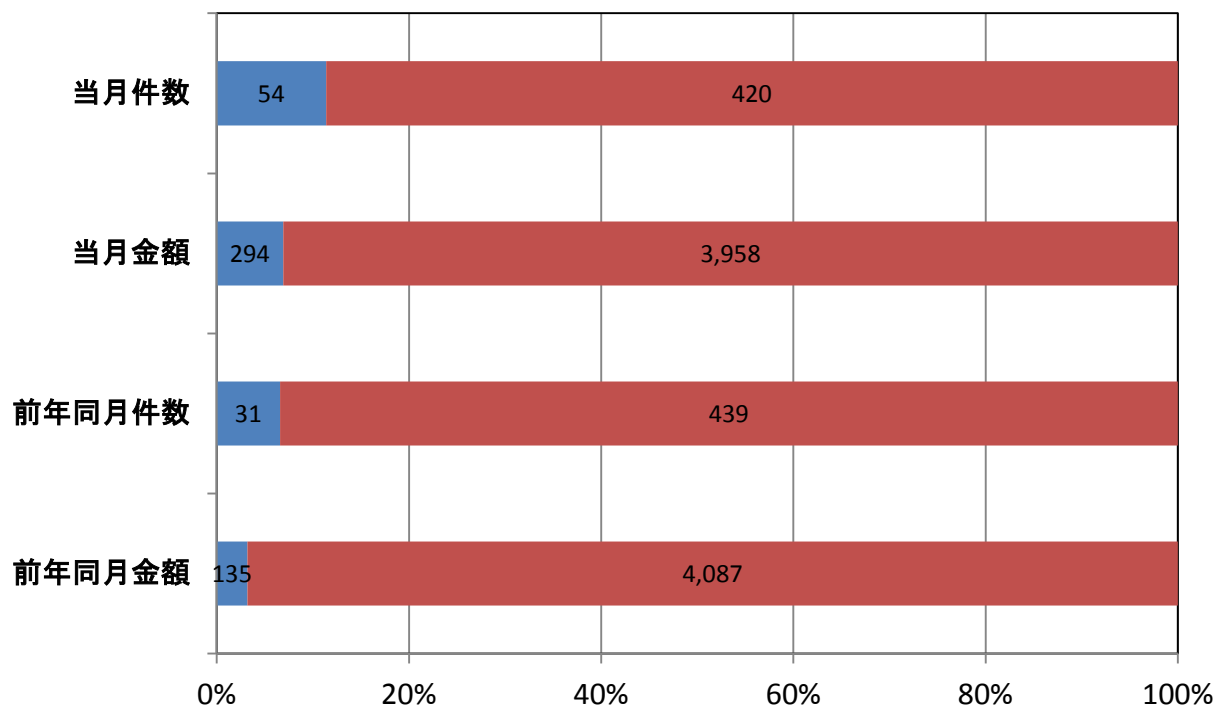
■ 件数(当月) ◆ 対前年同月比



新規・継続別保証承諾実績

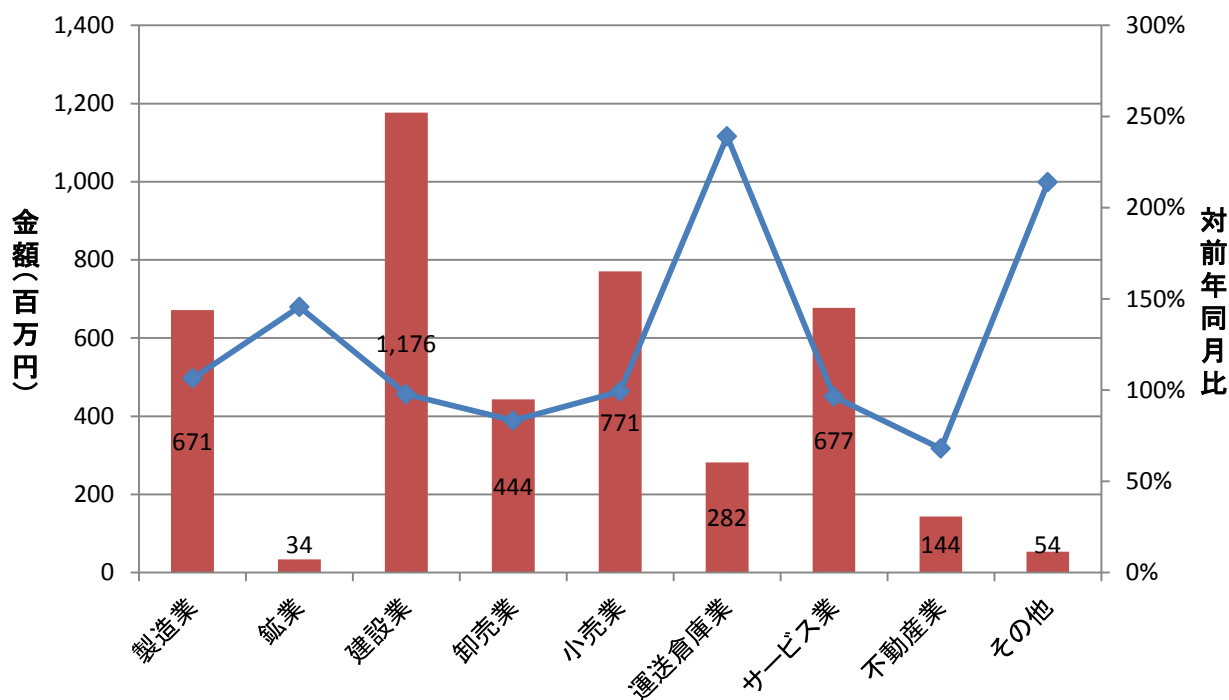
■ 新規 ■ 継続

(単位: 件、百万円)



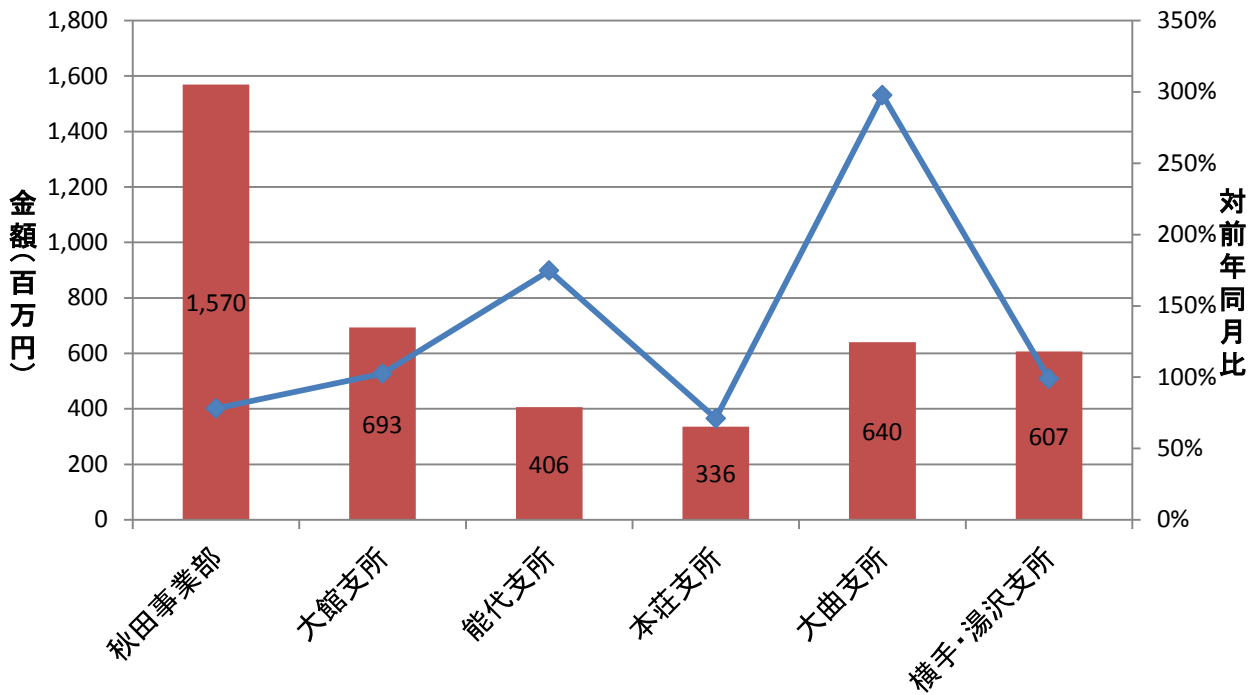
業種別保証承諾実績

■ 金額(当月) ◆ 対前年同月比

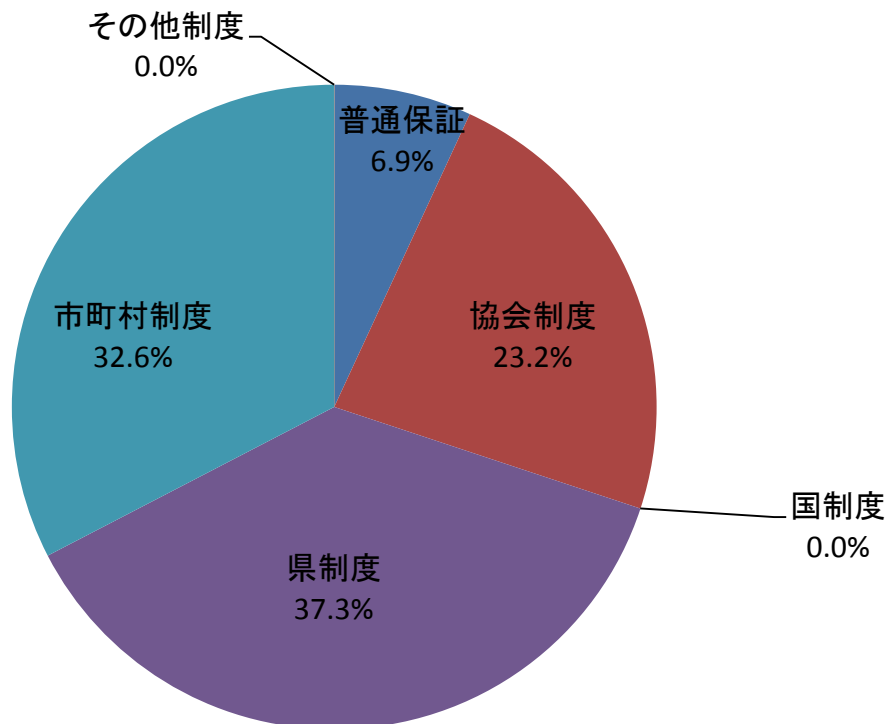


部支所別保証承諾実績

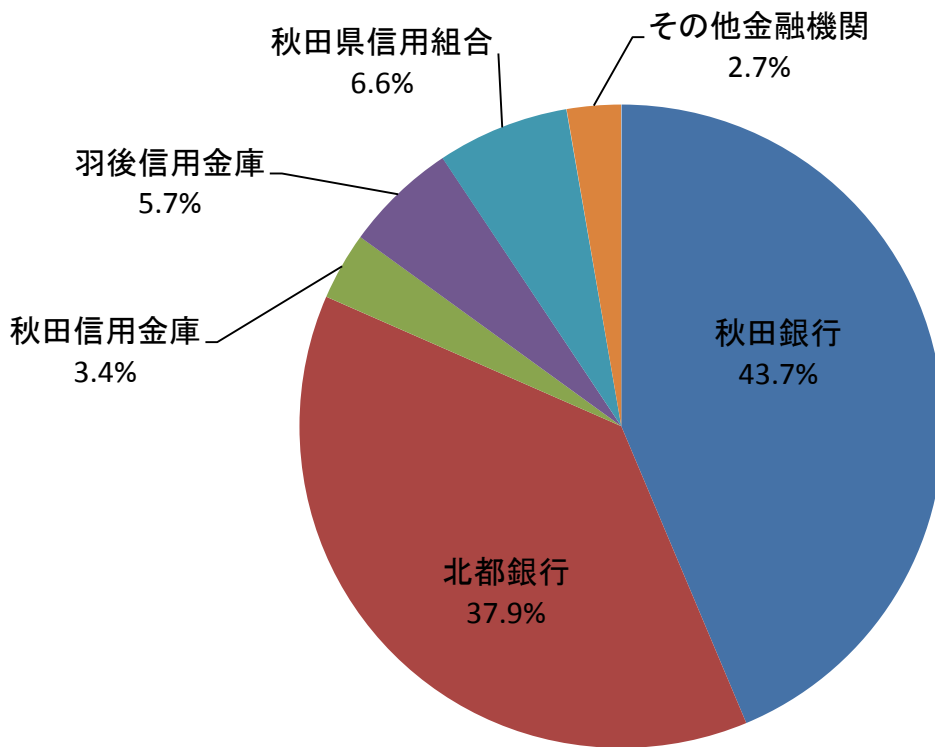
金額(当月) 対前年同月比



制度別保証金額割合(当月)



金融機関別保証承諾割合



金融機関別一般・セーフティネット保証承諾割合(金額、当月)

■ 一般 ■ セーフティ

