

## 9月事業概況

(単位:千円, %)

| 項目     | 件数     | 金額          | 対前年比  |
|--------|--------|-------------|-------|
| 保証利用企業 | 15,026 | -           | 99.0  |
| 保証申込   | 482    | 4,194,477   | 81.9  |
| 保証承諾   | 482    | 4,159,600   | 84.1  |
| 保証残高   | 31,677 | 345,078,784 | 103.0 |
| 代位弁済   | 14     | 160,356     | 109.5 |

## 資金使途別保証承諾状況

(単位:千円, %)

|        | 9 月 中 |           |       |       | 4 年 度 累 計 |            |      |       |
|--------|-------|-----------|-------|-------|-----------|------------|------|-------|
|        | 件数    | 金額        | 前年比   | 構成比   | 件数        | 金額         | 前年比  | 構成比   |
| 運転資金   | 223   | 2,780,408 | 75.2  | 66.8  | 1,189     | 15,227,608 | 89.2 | 69.6  |
| 設備資金   | 52    | 331,960   | 81.0  | 8.0   | 285       | 1,911,982  | 94.4 | 8.7   |
| 運転設備資金 | 207   | 1,047,232 | 124.6 | 25.2  | 737       | 4,727,985  | 94.2 | 21.6  |
| 合 計    | 482   | 4,159,600 | 84.1  | 100.0 | 2,211     | 21,867,575 | 90.7 | 100.0 |

## 期間別保証承諾状況

(単位:千円, %)

|        | 9 月 中 |           |       |       | 4 年 度 累 計 |            |       |       |
|--------|-------|-----------|-------|-------|-----------|------------|-------|-------|
|        | 件数    | 金額        | 前年比   | 構成比   | 件数        | 金額         | 前年比   | 構成比   |
| 3か月以下  | 19    | 217,350   | 247.0 | 5.2   | 54        | 408,930    | 99.7  | 1.9   |
| 6か月以下  | 27    | 353,500   | 95.4  | 8.5   | 96        | 1,270,200  | 99.3  | 5.8   |
| 1か年以下  | 56    | 847,200   | 78.5  | 20.4  | 257       | 4,256,150  | 87.9  | 19.5  |
| 2か年以下  | 150   | 477,000   | 102.4 | 11.5  | 458       | 1,873,926  | 74.1  | 8.6   |
| 3か年以下  | 10    | 42,920    | 65.8  | 1.0   | 88        | 416,921    | 155.5 | 1.9   |
| 4か年以下  | 3     | 7,500     | 3.6   | 0.2   | 36        | 217,207    | 58.7  | 1.0   |
| 5か年以下  | 57    | 399,129   | 187.6 | 9.6   | 234       | 1,170,567  | 112.5 | 5.4   |
| 7か年以下  | 37    | 442,372   | 127.0 | 10.6  | 214       | 1,611,513  | 110.3 | 7.4   |
| 10か年以下 | 121   | 1,353,629 | 67.6  | 32.5  | 760       | 10,211,661 | 93.8  | 46.7  |
| 10か年超  | 2     | 19,000    | 18.2  | 0.5   | 14        | 430,500    | 42.2  | 2.0   |
| 合 計    | 482   | 4,159,600 | 84.1  | 100.0 | 2,211     | 21,867,575 | 90.7  | 100.0 |

## 金額別保証承諾状況

(単位:千円, %)

|           | 9 月 中 |           |       |       | 4 年 度 累 計 |            |       |       |
|-----------|-------|-----------|-------|-------|-----------|------------|-------|-------|
|           | 件数    | 金額        | 前年比   | 構成比   | 件数        | 金額         | 前年比   | 構成比   |
| 100万円以下   | 86    | 70,370    | 114.5 | 1.7   | 302       | 249,944    | 89.1  | 1.1   |
| 200万円以下   | 77    | 138,109   | 135.7 | 3.3   | 305       | 538,249    | 94.6  | 2.5   |
| 300万円以下   | 82    | 238,960   | 121.6 | 5.7   | 334       | 959,581    | 92.9  | 4.4   |
| 500万円以下   | 59    | 269,940   | 88.9  | 6.5   | 336       | 1,533,828  | 104.9 | 7.0   |
| 1,000万円以下 | 74    | 608,940   | 86.7  | 14.6  | 396       | 3,291,980  | 102.0 | 15.1  |
| 1,500万円以下 | 27    | 360,890   | 119.5 | 8.7   | 138       | 1,858,848  | 108.2 | 8.5   |
| 2,000万円以下 | 35    | 686,732   | 127.1 | 16.5  | 153       | 2,971,986  | 91.1  | 13.6  |
| 3,000万円以下 | 17    | 476,000   | 53.0  | 11.4  | 105       | 2,931,506  | 83.8  | 13.4  |
| 5,000万円以下 | 16    | 642,659   | 66.4  | 15.5  | 97        | 4,095,821  | 85.4  | 18.7  |
| 6,000万円以下 | 2     | 117,000   | 195.0 | 2.8   | 8         | 477,000    | 33.4  | 2.2   |
| 7,000万円以下 | 1     | 70,000    | *     | 1.7   | 5         | 334,700    | 121.2 | 1.5   |
| 8,000万円以下 | 6     | 480,000   | 67.2  | 11.5  | 30        | 2,393,732  | 187.9 | 10.9  |
| 1億円以下     | 0     | 0         | *     | *     | 0         | 0          | *     | *     |
| 1億2千万円以下  | 0     | 0         | *     | *     | 2         | 230,400    | 192.0 | 1.1   |
| 1億5千万円以下  | 0     | 0         | *     | *     | 0         | 0          | *     | *     |
| 2億円以下     | 0     | 0         | *     | *     | 0         | 0          | *     | *     |
| 合 計       | 482   | 4,159,600 | 84.1  | 100.0 | 2,211     | 21,867,575 | 90.7  | 100.0 |

## 新規・継続別保証承諾状況

(単位:千円, %)

|     | 9 月 中 |           |      |       | 4 年 度 累 計 |            |      |       |
|-----|-------|-----------|------|-------|-----------|------------|------|-------|
|     | 件数    | 金額        | 前年比  | 構成比   | 件数        | 金額         | 前年比  | 構成比   |
| 新規  | 60    | 318,700   | 96.6 | 7.7   | 299       | 1,793,459  | 83.1 | 8.2   |
| 継続  | 422   | 3,840,900 | 83.2 | 92.3  | 1,912     | 20,074,116 | 91.5 | 91.8  |
| 合 計 | 482   | 4,159,600 | 84.1 | 100.0 | 2,211     | 21,867,575 | 90.7 | 100.0 |

金融機関別保証状況

(単位:千円, %)

|           | 保証承諾 |           |       |       |       |            |       |       | 9月末保債務残高 |             |       |       | 代位弁済<br>(4年度累計) |           |       |
|-----------|------|-----------|-------|-------|-------|------------|-------|-------|----------|-------------|-------|-------|-----------------|-----------|-------|
|           | 9月中  |           |       |       | 4年度累計 |            |       |       | 件数       | 金額          | 前年比   | 構成比   | 件数              | 金額        | 前年比   |
|           | 件数   | 金額        | 前年比   | 構成比   | 件数    | 金額         | 前年比   | 構成比   |          |             |       |       |                 |           |       |
| みずほ銀行     | 0    | 0         | *     | *     | 2     | 45,000     | 94.7  | 0.2   | 14       | 173,909     | 76.4  | 0.1   | 0               | 0         | *     |
| 三菱UFJ銀行   | 0    | 0         | *     | *     | 0     | 0          | *     | *     | 12       | 150,836     | 52.1  | 0.0   | 0               | 0         | *     |
| (都市銀行計)   | 0    | 0         | *     | *     | 2     | 45,000     | 28.6  | 0.2   | 26       | 324,745     | 62.8  | 0.1   | 0               | 0         | *     |
| 秋田銀行      | 163  | 1,254,801 | 77.5  | 30.2  | 810   | 7,839,910  | 88.6  | 35.9  | 13,778   | 159,384,544 | 101.4 | 46.2  | 39              | 382,030   | 175.4 |
| 北都銀行      | 158  | 2,114,219 | 83.4  | 50.8  | 732   | 9,617,490  | 93.8  | 44.0  | 10,234   | 126,087,302 | 104.8 | 36.5  | 31              | 380,637   | 198.6 |
| 荘内銀行      | 0    | 0         | *     | *     | 0     | 0          | *     | *     | 26       | 347,340     | 85.0  | 0.1   | 0               | 0         | *     |
| 青森銀行      | 1    | 15,000    | 75.0  | 0.4   | 7     | 77,000     | 56.6  | 0.4   | 134      | 1,693,023   | 112.6 | 0.5   | 0               | 0         | *     |
| 山形銀行      | 1    | 1,450     | 48.3  | 0.0   | 2     | 4,450      | 5.4   | 0.0   | 56       | 670,929     | 84.6  | 0.2   | 3               | 67,454    | *     |
| 東北銀行      | 0    | 0         | *     | *     | 6     | 58,900     | 66.6  | 0.3   | 81       | 949,673     | 100.0 | 0.3   | 0               | 0         | *     |
| 七十七銀行     | 0    | 0         | *     | *     | 3     | 53,750     | 199.1 | 0.2   | 20       | 225,188     | 121.5 | 0.1   | 0               | 0         | *     |
| 岩手銀行      | 1    | 500       | 2.8   | 0.0   | 2     | 30,500     | 34.5  | 0.1   | 61       | 770,292     | 100.0 | 0.2   | 0               | 0         | *     |
| みちのく銀行    | 2    | 5,500     | 9.1   | 0.1   | 16    | 136,200    | 78.1  | 0.6   | 168      | 1,447,973   | 106.5 | 0.4   | 1               | 20,199    | *     |
| (地方銀行計)   | 326  | 3,391,470 | 79.7  | 81.5  | 1,578 | 17,818,200 | 90.3  | 81.5  | 24,558   | 291,576,262 | 102.9 | 84.5  | 74              | 850,321   | 196.2 |
| 北日本銀行     | 2    | 17,000    | 170.0 | 0.4   | 7     | 48,500     | 57.1  | 0.2   | 217      | 2,562,322   | 101.5 | 0.7   | 1               | 1,002     | *     |
| きらやか銀行    | 6    | 61,000    | 196.8 | 1.5   | 11    | 103,000    | 87.1  | 0.5   | 150      | 1,689,764   | 99.9  | 0.5   | 0               | 0         | *     |
| (第二地方銀行計) | 8    | 78,000    | 190.2 | 1.9   | 18    | 151,500    | 74.6  | 0.7   | 367      | 4,252,086   | 100.8 | 1.2   | 1               | 1,002     | *     |
| 秋田信用金庫    | 42   | 204,340   | 75.6  | 4.9   | 178   | 1,229,444  | 88.1  | 5.6   | 2,302    | 17,892,891  | 110.0 | 5.2   | 5               | 53,150    | 167.0 |
| 羽後信用金庫    | 70   | 320,120   | 126.4 | 7.7   | 269   | 1,508,921  | 95.3  | 6.9   | 2,449    | 15,699,027  | 101.8 | 4.5   | 17              | 103,243   | 381.5 |
| (信用金庫計)   | 112  | 524,460   | 100.2 | 12.6  | 447   | 2,738,365  | 91.9  | 12.5  | 4,751    | 33,591,918  | 106.0 | 9.7   | 22              | 156,393   | 265.6 |
| 秋田県信用組合   | 36   | 165,670   | 131.2 | 4.0   | 164   | 1,102,510  | 110.7 | 5.0   | 1,918    | 14,561,855  | 101.9 | 4.2   | 16              | 78,020    | 132.2 |
| あすか信用組合   | 0    | 0         | *     | *     | 0     | 0          | *     | *     | 1        | 40,000      | 88.9  | 0.0   | 0               | 0         | *     |
| (信用組合計)   | 36   | 165,670   | 131.2 | 4.0   | 164   | 1,102,510  | 110.1 | 5.0   | 1,919    | 14,601,855  | 101.8 | 4.2   | 16              | 78,020    | 132.2 |
| 商工組合中央金庫  | 0    | 0         | *     | *     | 2     | 12,000     | 30.0  | 0.1   | 55       | 611,930     | 83.2  | 0.2   | 0               | 0         | *     |
| かづの農協     | 0    | 0         | *     | *     | 0     | 0          | *     | *     | 1        | 119,988     | 90.0  | 0.0   | 0               | 0         | *     |
| (その他計)    | 0    | 0         | *     | *     | 2     | 12,000     | 30.0  | 0.1   | 56       | 731,918     | 84.3  | 0.2   | 0               | 0         | *     |
| 合計        | 482  | 4,159,600 | 84.1  | 100.0 | 2,211 | 21,867,575 | 90.7  | 100.0 | 31,677   | 345,078,784 | 103.0 | 100.0 | 113             | 1,085,736 | 197.0 |

業種別保証状況

(単位:千円, %)

|             | 保証承諾 |           |         |       |       |            |       |       | 9月末保証債務残高 |             |       |       | 代位弁済<br>(4年度累計) |           |          |
|-------------|------|-----------|---------|-------|-------|------------|-------|-------|-----------|-------------|-------|-------|-----------------|-----------|----------|
|             | 9月中  |           |         |       | 4年度累計 |            |       |       | 件数        | 金額          | 前年比   | 構成比   | 件数              | 金額        | 前年比      |
|             | 件数   | 金額        | 前年比     | 構成比   | 件数    | 金額         | 前年比   | 構成比   |           |             |       |       |                 |           |          |
| 食料品工業       | 17   | 204,350   | 305.0   | 4.9   | 63    | 808,919    | 133.3 | 3.7   | 796       | 10,723,508  | 105.1 | 3.1   | 10              | 71,321    | 16,518.5 |
| 繊維品工業       | 5    | 11,500    | 575.0   | 0.3   | 35    | 328,570    | 144.5 | 1.5   | 412       | 4,090,578   | 103.8 | 1.2   | 3               | 67,454    | 138.9    |
| 木材・木製品工業    | 4    | 28,600    | 39.6    | 0.7   | 20    | 287,082    | 106.0 | 1.3   | 280       | 4,489,560   | 103.8 | 1.3   | 0               | 0         | *        |
| 家具・建具工業     | 4    | 21,500    | 2,150.0 | 0.5   | 12    | 115,000    | 177.2 | 0.5   | 199       | 1,867,527   | 105.4 | 0.5   | 0               | 0         | *        |
| 紙工業         | 0    | 0         | *       | *     | 2     | 18,000     | 100.0 | 0.1   | 26        | 297,874     | 103.1 | 0.1   | 0               | 0         | *        |
| 製版・製本業      | 0    | 0         | *       | *     | 0     | 0          | *     | *     | 5         | 50,090      | 107.3 | 0.0   | 0               | 0         | *        |
| 化学工業        | 0    | 0         | *       | *     | 0     | 0          | *     | *     | 9         | 175,810     | 109.0 | 0.1   | 0               | 0         | *        |
| 石油石炭工業      | 0    | 0         | *       | *     | 0     | 0          | *     | *     | 7         | 162,146     | 111.1 | 0.0   | 0               | 0         | *        |
| ゴム・プラスチック工業 | 1    | 13,000    | 43.3    | 0.3   | 3     | 26,000     | 27.7  | 0.1   | 73        | 1,088,293   | 98.8  | 0.3   | 0               | 0         | *        |
| ゴム製品工業      | 0    | 0         | *       | *     | 0     | 0          | *     | *     | 6         | 183,434     | 153.8 | 0.1   | 0               | 0         | *        |
| 皮革工業        | 1    | 1,000     | 16.1    | 0.0   | 5     | 21,000     | 94.6  | 0.1   | 57        | 458,440     | 113.8 | 0.1   | 0               | 0         | *        |
| 窯業          | 1    | 30,000    | 130.4   | 0.7   | 6     | 113,558    | 104.7 | 0.5   | 123       | 1,824,664   | 99.4  | 0.5   | 0               | 0         | *        |
| 機械工業        | 11   | 204,200   | 377.1   | 4.9   | 33    | 431,930    | 73.4  | 2.0   | 569       | 7,779,612   | 97.1  | 2.3   | 0               | 0         | *        |
| 電気機器工業      | 1    | 2,000     | 6.7     | 0.0   | 8     | 123,960    | 35.5  | 0.6   | 223       | 4,518,730   | 109.5 | 1.3   | 3               | 11,562    | *        |
| 車輛工業        | 0    | 0         | *       | *     | 2     | 160,000    | 533.3 | 0.7   | 39        | 1,052,671   | 100.4 | 0.3   | 0               | 0         | *        |
| 船舶工業        | 0    | 0         | *       | *     | 0     | 0          | *     | *     | 6         | 10,681      | 99.0  | 0.0   | 0               | 0         | *        |
| 金属工業        | 3    | 33,500    | 41.6    | 0.8   | 10    | 287,400    | 42.7  | 1.3   | 307       | 6,158,692   | 98.9  | 1.8   | 0               | 0         | *        |
| ソフトウェア業     | 2    | 1,320     | *       | 0.0   | 6     | 8,320      | 332.8 | 0.0   | 89        | 1,017,946   | 107.3 | 0.3   | 0               | 0         | *        |
| 情報処理サービス業   | 0    | 0         | *       | *     | 0     | 0          | *     | *     | 7         | 29,083      | 89.1  | 0.0   | 0               | 0         | *        |
| 農林漁業        | 0    | 0         | *       | *     | 2     | 11,300     | 53.3  | 0.1   | 36        | 337,831     | 90.2  | 0.1   | 0               | 0         | *        |
| その他の工業      | 16   | 43,870    | 98.6    | 1.1   | 75    | 372,724    | 131.1 | 1.7   | 905       | 5,699,021   | 97.8  | 1.7   | 0               | 0         | *        |
| 製造業計        | 66   | 594,840   | 144.9   | 14.3  | 282   | 3,113,763  | 92.6  | 14.2  | 4,174     | 52,016,191  | 102.1 | 15.1  | 16              | 150,337   | 82.6     |
| 鉱業          | 0    | 0         | *       | *     | 4     | 101,500    | 42.3  | 0.5   | 79        | 1,598,331   | 114.0 | 0.5   | 0               | 0         | *        |
| 建設業         | 139  | 1,113,200 | 99.6    | 26.8  | 627   | 5,764,474  | 93.3  | 26.4  | 8,030     | 83,005,326  | 102.6 | 24.1  | 18              | 174,434   | 767.6    |
| 卸売業         | 42   | 796,300   | 77.7    | 19.1  | 144   | 2,413,710  | 81.4  | 11.0  | 2,196     | 33,283,631  | 104.4 | 9.6   | 16              | 186,297   | 146.2    |
| 小売業         | 107  | 652,038   | 70.8    | 15.7  | 535   | 4,310,062  | 102.3 | 19.7  | 7,909     | 68,080,810  | 104.9 | 19.7  | 39              | 259,491   | 170.0    |
| 運送倉庫業       | 7    | 126,000   | 221.1   | 3.0   | 55    | 867,424    | 84.2  | 4.0   | 970       | 15,759,916  | 102.5 | 4.6   | 13              | 216,190   | *        |
| サービス業       | 86   | 544,832   | 53.1    | 13.1  | 402   | 3,580,640  | 84.3  | 16.4  | 6,072     | 65,633,660  | 103.3 | 19.0  | 11              | 98,988    | 6,016.9  |
| 不動産業        | 27   | 291,690   | 113.5   | 7.0   | 123   | 1,353,245  | 90.8  | 6.2   | 1,510     | 16,102,969  | 100.0 | 4.7   | 0               | 0         | *        |
| その他         | 8    | 40,700    | 75.6    | 1.0   | 39    | 362,757    | 97.0  | 1.7   | 737       | 9,597,950   | 95.6  | 2.8   | 0               | 0         | *        |
| 非製造業計       | 416  | 3,564,760 | 78.6    | 85.7  | 1,929 | 18,753,812 | 90.4  | 85.8  | 27,503    | 293,062,593 | 103.1 | 84.9  | 97              | 935,399   | 253.4    |
| 合計          | 482  | 4,159,600 | 84.1    | 100.0 | 2,211 | 21,867,575 | 90.7  | 100.0 | 31,677    | 345,078,784 | 103.0 | 100.0 | 113             | 1,085,736 | 197.0    |

## 市町村別保証状況

(単位:千円, %)

|       | 保証承諾 |           |         |       |       |            |       |       | 9月末保証債務残高 |             |       |       | 代位弁済    |           |         |
|-------|------|-----------|---------|-------|-------|------------|-------|-------|-----------|-------------|-------|-------|---------|-----------|---------|
|       | 9月中  |           |         |       | 4年度累計 |            |       |       |           |             |       |       | (4年度累計) |           |         |
|       | 件数   | 金額        | 前年比     | 構成比   | 件数    | 金額         | 前年比   | 構成比   | 件数        | 金額          | 前年比   | 件数    | 金額      | 前年比       |         |
| 秋田市   | 136  | 1,163,502 | 84.8    | 28.0  | 675   | 7,362,218  | 109.7 | 33.7  | 10,730    | 123,431,877 | 104.4 | 35.8  | 32      | 238,160   | 118.2   |
| 能代市   | 19   | 80,350    | 37.4    | 1.9   | 91    | 781,028    | 61.3  | 3.6   | 1,611     | 18,625,811  | 101.1 | 5.4   | 10      | 212,556   | 213.5   |
| 横手市   | 58   | 585,150   | 176.1   | 14.1  | 259   | 2,434,808  | 85.4  | 11.1  | 3,252     | 38,579,098  | 105.4 | 11.2  | 20      | 314,313   | 283.4   |
| 大館市   | 28   | 290,750   | 36.8    | 7.0   | 145   | 1,696,002  | 72.3  | 7.8   | 2,344     | 26,808,720  | 102.6 | 7.8   | 5       | 18,270    | 369.0   |
| 北秋田市  | 18   | 95,530    | 133.4   | 2.3   | 73    | 571,084    | 113.3 | 2.6   | 854       | 8,382,374   | 106.6 | 2.4   | 3       | 9,298     | *       |
| 由利本荘市 | 57   | 413,329   | 118.9   | 9.9   | 194   | 1,587,949  | 105.9 | 7.3   | 2,205     | 17,493,593  | 101.6 | 5.1   | 14      | 103,602   | 129.1   |
| にかほ市  | 20   | 151,400   | 201.7   | 3.6   | 67    | 542,400    | 65.2  | 2.5   | 926       | 9,259,601   | 93.2  | 2.7   | 5       | 20,527    | 208.3   |
| 男鹿市   | 9    | 86,300    | 63.1    | 2.1   | 47    | 559,290    | 115.7 | 2.6   | 793       | 9,112,670   | 100.2 | 2.6   | 1       | 2,197     | 8.6     |
| 湯上市   | 13   | 160,629   | 60.8    | 3.9   | 72    | 639,027    | 94.9  | 2.9   | 963       | 9,574,669   | 103.0 | 2.8   | 0       | 0         | *       |
| 湯沢市   | 22   | 148,500   | 49.2    | 3.6   | 115   | 1,203,052  | 79.3  | 5.5   | 1,367     | 15,673,306  | 100.4 | 4.5   | 8       | 51,219    | 987.7   |
| 大仙市   | 41   | 408,120   | 142.2   | 9.8   | 177   | 1,872,218  | 93.2  | 8.6   | 2,497     | 24,291,593  | 105.1 | 7.0   | 3       | 11,562    | 2,677.9 |
| 仙北市   | 16   | 143,650   | 252.2   | 3.5   | 63    | 467,510    | 71.0  | 2.1   | 924       | 8,635,019   | 91.4  | 2.5   | 4       | 39,195    | 391.5   |
| 鹿角市   | 8    | 55,500    | 90.0    | 1.3   | 61    | 524,257    | 112.0 | 2.4   | 898       | 9,867,860   | 103.0 | 2.9   | 0       | 0         | *       |
| 13市計  | 445  | 3,782,710 | 87.7    | 90.9  | 2,039 | 20,240,843 | 92.7  | 92.6  | 29,364    | 319,736,190 | 103.0 | 92.7  | 105     | 1,020,900 | 185.4   |
| 小坂町   | 1    | 20,000    | 17.5    | 0.5   | 4     | 50,948     | 29.4  | 0.2   | 98        | 1,404,093   | 120.6 | 0.4   | 0       | 0         | *       |
| 鹿角郡計  | 1    | 20,000    | 17.5    | 0.5   | 4     | 50,948     | 29.4  | 0.2   | 98        | 1,404,093   | 120.6 | 0.4   | 0       | 0         | *       |
| 上小阿仁村 | 2    | 25,000    | 2,083.3 | 0.6   | 10    | 83,400     | 571.2 | 0.4   | 67        | 667,446     | 98.6  | 0.2   | 1       | 14,332    | *       |
| 北秋田郡計 | 2    | 25,000    | 2,083.3 | 0.6   | 10    | 83,400     | 571.2 | 0.4   | 67        | 667,446     | 98.6  | 0.2   | 1       | 14,332    | *       |
| 藤里町   | 1    | 3,000     | *       | 0.1   | 5     | 18,125     | 453.1 | 0.1   | 69        | 455,560     | 87.7  | 0.1   | 0       | 0         | *       |
| 三種町   | 5    | 37,000    | 112.5   | 0.9   | 19    | 119,080    | 59.6  | 0.5   | 386       | 4,084,757   | 99.8  | 1.2   | 2       | 11,701    | *       |
| 八峰町   | 1    | 2,000     | 10.0    | 0.0   | 13    | 65,480     | 167.0 | 0.3   | 142       | 1,420,612   | 102.6 | 0.4   | 0       | 0         | *       |
| 山本郡計  | 7    | 42,000    | 79.4    | 1.0   | 37    | 202,685    | 83.4  | 0.9   | 597       | 5,960,929   | 99.4  | 1.7   | 2       | 11,701    | *       |
| 五城目町  | 6    | 29,500    | 140.5   | 0.7   | 16    | 89,000     | 63.7  | 0.4   | 246       | 2,126,424   | 100.0 | 0.6   | 0       | 0         | *       |
| 八郎潟町  | 2    | 13,000    | *       | 0.3   | 6     | 30,560     | 43.2  | 0.1   | 146       | 1,283,014   | 109.3 | 0.4   | 0       | 0         | *       |
| 井川町   | 2    | 15,700    | *       | 0.4   | 14    | 83,370     | 335.2 | 0.4   | 103       | 850,962     | 106.8 | 0.2   | 2       | 20,102    | *       |
| 大湯村   | 4    | 49,700    | 125.8   | 1.2   | 7     | 179,200    | 58.2  | 0.8   | 41        | 800,753     | 83.0  | 0.2   | 0       | 0         | *       |
| 南秋田郡計 | 14   | 107,900   | 178.3   | 2.6   | 43    | 382,130    | 70.3  | 1.7   | 536       | 5,061,152   | 100.0 | 1.5   | 2       | 20,102    | 3,517.0 |
| 美郷町   | 5    | 43,000    | 34.1    | 1.0   | 29    | 162,410    | 34.7  | 0.7   | 446       | 4,071,629   | 95.3  | 1.2   | 3       | 18,702    | *       |
| 仙北郡計  | 5    | 43,000    | 34.1    | 1.0   | 29    | 162,410    | 34.7  | 0.7   | 446       | 4,071,629   | 95.3  | 1.2   | 3       | 18,702    | *       |
| 羽後町   | 2    | 9,000     | 45.0    | 0.2   | 35    | 479,900    | 258.8 | 2.2   | 305       | 3,275,926   | 115.7 | 0.9   | 0       | 0         | *       |
| 東成瀬村  | 1    | 10,000    | 2,000.0 | 0.2   | 3     | 12,500     | 61.9  | 0.1   | 79        | 795,669     | 116.1 | 0.2   | 0       | 0         | *       |
| 雄勝郡計  | 3    | 19,000    | 92.7    | 0.5   | 38    | 492,400    | 239.4 | 2.3   | 384       | 4,071,595   | 115.7 | 1.2   | 0       | 0         | *       |
| 県外    | 5    | 119,990   | 45.8    | 2.9   | 11    | 252,759    | 40.2  | 1.2   | 185       | 4,105,749   | 105.4 | 1.2   | 0       | 0         | *       |
| 合計    | 482  | 4,159,600 | 84.1    | 100.0 | 2,211 | 21,867,575 | 90.7  | 100.0 | 31,677    | 345,078,784 | 103.0 | 100.0 | 113     | 1,085,736 | 197.0   |

## 営業室・支所別状況

(単位:千円, %)

|        | 保証承諾 |           |       |       |       |            |       |       | 9月末保証債務残高 |             |       |       | 代位弁済    |           |       |
|--------|------|-----------|-------|-------|-------|------------|-------|-------|-----------|-------------|-------|-------|---------|-----------|-------|
|        | 9月中  |           |       |       | 4年度累計 |            |       |       |           |             |       |       | (4年度累計) |           |       |
|        | 件数   | 金額        | 前年比   | 構成比   | 件数    | 金額         | 前年比   | 構成比   | 件数        | 金額          | 前年比   | 件数    | 金額      | 前年比       |       |
| 秋田東営業室 | 87   | 627,590   | 94.9  | 15.1  | 424   | 4,304,578  | 121.5 | 19.7  | 6,841     | 75,862,619  | 104.5 | 22.0  | 28      | 202,154   | 123.7 |
| 秋田西営業室 | 87   | 894,231   | 69.9  | 21.5  | 415   | 4,598,377  | 91.4  | 21.0  | 6,227     | 71,814,300  | 103.3 | 20.8  | 8       | 59,431    | 89.1  |
| 大館支所   | 58   | 492,780   | 44.0  | 11.8  | 301   | 3,127,260  | 83.5  | 14.3  | 4,319     | 48,300,197  | 103.3 | 14.0  | 9       | 41,900    | 846.2 |
| 能代支所   | 28   | 222,350   | 64.4  | 5.3   | 130   | 1,080,113  | 64.7  | 4.9   | 2,235     | 25,731,407  | 101.4 | 7.5   | 12      | 224,257   | 225.3 |
| 本荘支所   | 76   | 563,229   | 134.9 | 13.5  | 259   | 2,137,849  | 91.4  | 9.8   | 3,123     | 26,770,505  | 98.5  | 7.8   | 16      | 119,156   | 132.3 |
| 大曲支所   | 61   | 589,770   | 125.0 | 14.2  | 270   | 2,500,138  | 79.0  | 11.4  | 3,873     | 37,632,159  | 100.8 | 10.9  | 9       | 68,333    | 654.3 |
| 横手湯沢支所 | 85   | 769,650   | 117.9 | 18.5  | 412   | 4,119,260  | 89.3  | 18.8  | 5,059     | 58,967,597  | 104.8 | 17.1  | 31      | 370,505   | 319.1 |
| 合計     | 482  | 4,159,600 | 84.1  | 100.0 | 2,211 | 21,867,575 | 90.7  | 100.0 | 31,677    | 345,078,784 | 103.0 | 100.0 | 113     | 1,085,736 | 197.0 |

制度別保証状況

(単位:千円,%)

|              | 保証承諾 |           |       |       |       |            |         |       | 9月末保証債務残高 |             |         |       | 代位弁済<br>(4年度累計) |           |         |
|--------------|------|-----------|-------|-------|-------|------------|---------|-------|-----------|-------------|---------|-------|-----------------|-----------|---------|
|              | 9月中  |           |       |       | 4年度累計 |            |         |       | 件数        | 金額          | 前年比     | 構成比   | 件数              | 金額        | 前年比     |
|              | 件数   | 金額        | 前年比   | 構成比   | 件数    | 金額         | 前年比     | 構成比   |           |             |         |       |                 |           |         |
| 普通保証         | 2    | 81,800    | 96.3  | 2.0   | 19    | 398,450    | 48.7    | 1.8   | 496       | 10,403,114  | 87.7    | 3.0   | 1               | 1,161     | *       |
| 繰上短期         | 8    | 179,000   | 57.6  | 4.3   | 85    | 1,585,000  | 77.6    | 7.2   | 118       | 2,103,575   | 74.1    | 0.6   | 1               | 40,145    | *       |
| 長期安定         | 0    | 0         | *     | *     | 0     | 0          | *       | *     | 3         | 19,822      | 48.2    | 0.0   | 0               | 0         | *       |
| 長期資金         | 0    | 0         | *     | *     | 0     | 0          | *       | *     | 3         | 46,788      | 61.5    | 0.0   | 0               | 0         | *       |
| 当座貸越         | 6    | 135,000   | 61.4  | 3.2   | 33    | 800,000    | 70.2    | 3.7   | 156       | 3,977,597   | 88.8    | 1.2   | 2               | 49,601    | *       |
| カードローン       | 30   | 136,000   | 76.6  | 3.3   | 142   | 845,500    | 89.0    | 3.9   | 555       | 3,427,796   | 88.9    | 1.0   | 1               | 15,166    | 153.7   |
| カードmini      | 121  | 212,400   | 237.8 | 5.1   | 312   | 551,840    | 107.4   | 2.5   | 1,479     | 2,320,749   | 89.3    | 0.7   | 6               | 11,880    | 149.6   |
| 流動資産(根保証)    | 0    | 0         | *     | *     | 4     | 286,400    | 94.2    | 1.3   | 5         | 486,400     | 156.1   | 0.1   | 1               | 7,689     | *       |
| 特定社債         | 0    | 0         | *     | *     | 0     | 0          | *       | *     | 10        | 429,600     | 94.9    | 0.1   | 0               | 0         | *       |
| 秋田銀行提携保証     | 0    | 0         | *     | *     | 2     | 8,700      | 197.7   | 0.0   | 90        | 507,085     | 60.5    | 0.1   | 1               | 19,372    | *       |
| Bizこまち       | 0    | 0         | *     | *     | 0     | 0          | *       | *     | 25        | 59,643      | 77.7    | 0.0   | 0               | 0         | *       |
| 北都銀行提携保証     | 4    | 95,000    | 218.4 | 2.3   | 7     | 160,000    | 98.2    | 0.7   | 314       | 2,108,076   | 63.6    | 0.6   | 1               | 12,123    | *       |
| ほくと創業        | 0    | 0         | *     | *     | 0     | 0          | *       | *     | 31        | 63,714      | 75.2    | 0.0   | 1               | 3,444     | *       |
| 秋田信託提携保証     | 0    | 0         | *     | *     | 0     | 0          | *       | *     | 3         | 1,449       | 55.7    | 0.0   | 0               | 0         | *       |
| あましん創業       | 1    | 6,000     | *     | 0.1   | 7     | 36,000     | 102.9   | 0.2   | 38        | 133,286     | 137.2   | 0.0   | 0               | 0         | *       |
| 羽後信託提携保証     | 1    | 3,000     | 100.0 | 0.1   | 4     | 12,000     | 66.7    | 0.1   | 2         | 5,650       | 73.6    | 0.0   | 0               | 0         | *       |
| 県信組提携保証      | 0    | 0         | *     | *     | 0     | 0          | *       | *     | 2         | 3,121       | 52.9    | 0.0   | 0               | 0         | *       |
| 財務型無保証人      | 0    | 0         | *     | *     | 0     | 0          | *       | *     | 2         | 92,096      | 41.2    | 0.0   | 0               | 0         | *       |
| 事業承継サポート     | 0    | 0         | *     | *     | 0     | 0          | *       | *     | 2         | 134,000     | *       | 0.0   | 0               | 0         | *       |
| 順風満帆         | 0    | 0         | *     | *     | 1     | 60,000     | 18.2    | 0.3   | 115       | 5,107,026   | 96.5    | 1.5   | 2               | 81,977    | *       |
| 創業不動産取得支援    | 3    | 16,600    | *     | 0.4   | 4     | 26,600     | *       | 0.1   | 2         | 13,432      | *       | 0.0   | 0               | 0         | *       |
| その他          | 0    | 0         | *     | *     | 0     | 0          | *       | *     | 0         | 0           | *       | 0.0   | 0               | 0         | *       |
| 協会制度計        | 174  | 783,000   | 76.1  | 18.8  | 601   | 4,372,040  | 76.5    | 20.0  | 2,955     | 21,040,904  | 85.5    | 6.1   | 16              | 241,398   | 1,161.2 |
| 国経営安定        | 0    | 0         | *     | *     | 0     | 0          | *       | *     | 25        | 817,105     | 87.5    | 0.2   | 0               | 0         | *       |
| 経営革新関連       | 0    | 0         | *     | *     | 0     | 0          | *       | *     | 2         | 22,716      | 85.2    | 0.0   | 0               | 0         | *       |
| 安定化(借換)      | 0    | 0         | *     | *     | 0     | 0          | *       | *     | 1         | 709         | 66.3    | 0.0   | 0               | 0         | *       |
| 全国緊急         | 0    | 0         | *     | *     | 0     | 0          | *       | *     | 3         | 48,485      | 98.9    | 0.0   | 0               | 0         | *       |
| 経営力強化        | 0    | 0         | *     | *     | 2     | 70,600     | 50.2    | 0.3   | 33        | 612,015     | 71.8    | 0.2   | 0               | 0         | *       |
| 経営サポート       | 0    | 0         | *     | *     | 0     | 0          | *       | *     | 16        | 351,746     | 95.1    | 0.1   | 0               | 0         | *       |
| 危機関連         | 0    | 0         | *     | *     | 0     | 0          | *       | *     | 16        | 625,497     | 104.1   | 0.2   | 0               | 0         | *       |
| 併走特別         | 0    | 0         | *     | *     | 6     | 101,000    | *       | 0.5   | 12        | 185,256     | *       | 0.1   | 0               | 0         | *       |
| 改善サポート       | 0    | 0         | *     | *     | 0     | 0          | *       | *     | 2         | 66,167      | 99.9    | 0.0   | 0               | 0         | *       |
| その他          | 0    | 0         | *     | *     | 0     | 0          | *       | *     | 0         | 0           | *       | 0.0   | 0               | 0         | *       |
| 国制度計         | 0    | 0         | *     | *     | 8     | 171,600    | 30.3    | 0.8   | 110       | 2,729,695   | 93.4    | 0.8   | 0               | 0         | *       |
| 振興資金(固定)     | 4    | 95,000    | 231.7 | 2.3   | 21    | 425,120    | 191.8   | 1.9   | 81        | 690,886     | 101.8   | 0.2   | 0               | 0         | *       |
| 振興資金(変動)     | 21   | 276,679   | 65.6  | 6.7   | 91    | 1,787,236  | 112.6   | 8.2   | 1,261     | 13,945,059  | 89.2    | 4.0   | 13              | 67,452    | 81.7    |
| 振興資金(小規模)    | 0    | 0         | *     | *     | 2     | 4,118      | *       | 0.0   | 26        | 81,200      | 106.1   | 0.0   | 0               | 0         | *       |
| 振興資金(23年地震)  | 0    | 0         | *     | *     | 0     | 0          | *       | *     | 40        | 339,553     | 87.6    | 0.1   | 0               | 0         | *       |
| 災害復旧         | 0    | 0         | *     | *     | 0     | 0          | *       | *     | 2         | 1,616       | 42.1    | 0.0   | 0               | 0         | *       |
| 県ABL(根保証)    | 1    | 5,600     | 100.0 | 0.1   | 5     | 44,800     | 68.3    | 0.2   | 21        | 304,800     | 91.6    | 0.1   | 0               | 0         | *       |
| 経営安定受注減      | 2    | 7,800     | 130.0 | 0.2   | 16    | 224,594    | 71.4    | 1.0   | 274       | 2,834,881   | 71.5    | 0.8   | 1               | 2,363     | 3.2     |
| 経営安定原油対策     | 0    | 0         | *     | *     | 0     | 0          | *       | *     | 1         | 5,755       | 100.0   | 0.0   | 0               | 0         | *       |
| 原油価格対策       | 0    | 0         | *     | *     | 0     | 0          | *       | *     | 6         | 94,354      | 98.3    | 0.0   | 0               | 0         | *       |
| 県緊急対策        | 0    | 0         | *     | *     | 0     | 0          | *       | *     | 297       | 1,739,111   | 55.1    | 0.5   | 0               | 0         | *       |
| 受注減小口        | 4    | 14,600    | 88.4  | 0.4   | 25    | 112,540    | 262.3   | 0.5   | 221       | 759,337     | 79.1    | 0.2   | 3               | 13,808    | 49.5    |
| 経営安定連倒       | 0    | 0         | *     | *     | 0     | 0          | *       | *     | 4         | 36,251      | 84.4    | 0.0   | 0               | 0         | *       |
| 連倒小口         | 0    | 0         | *     | *     | 0     | 0          | *       | *     | 1         | 920         | 71.9    | 0.0   | 0               | 0         | *       |
| 経営安定再生       | 0    | 0         | *     | *     | 0     | 0          | *       | *     | 14        | 223,038     | 94.1    | 0.1   | 0               | 0         | *       |
| 経営安定電気       | 0    | 0         | *     | *     | 0     | 0          | *       | *     | 1         | 1,451       | 21.5    | 0.0   | 0               | 0         | *       |
| 経営安定消費税      | 0    | 0         | *     | *     | 0     | 0          | *       | *     | 15        | 176,303     | 86.3    | 0.1   | 0               | 0         | *       |
| 経営安定消費税      | 0    | 0         | *     | *     | 0     | 0          | *       | *     | 2         | 10,507      | 87.6    | 0.0   | 0               | 0         | *       |
| 経営安定借換       | 0    | 0         | *     | *     | 0     | 0          | *       | *     | 108       | 991,832     | 60.8    | 0.3   | 0               | 0         | *       |
| 経営安定借換       | 0    | 0         | *     | *     | 0     | 0          | *       | *     | 17        | 142,400     | 73.4    | 0.0   | 0               | 0         | *       |
| 経営安定コロナ      | 47   | 805,572   | 637.2 | 19.4  | 454   | 7,363,793  | 1,829.8 | 33.7  | 2,609     | 52,082,450  | 1,296.1 | 15.1  | 2               | 58,294    | *       |
| 県創業支援        | 7    | 37,100    | 145.5 | 0.9   | 49    | 293,330    | 182.2   | 1.3   | 283       | 1,059,445   | 143.6   | 0.3   | 1               | 615       | 32.5    |
| 新事業事業革新      | 0    | 0         | *     | *     | 2     | 6,550      | *       | 0.0   | 31        | 386,188     | 87.0    | 0.1   | 0               | 0         | *       |
| 県支援創業関連      | 0    | 0         | *     | *     | 0     | 0          | *       | *     | 1         | 2,347       | 81.8    | 0.0   | 0               | 0         | *       |
| 新事業フェニックス    | 0    | 0         | *     | *     | 0     | 0          | *       | *     | 1         | 71,034      | 100.0   | 0.0   | 0               | 0         | *       |
| 事業承継資金       | 2    | 71,570    | 715.7 | 1.7   | 7     | 87,320     | 105.8   | 0.4   | 34        | 286,093     | 109.7   | 0.1   | 0               | 0         | *       |
| 県小口          | 0    | 0         | *     | *     | 5     | 28,800     | 194.1   | 0.1   | 57        | 135,183     | 89.8    | 0.0   | 1               | 1,126     | *       |
| 県アグリ         | 0    | 0         | *     | *     | 0     | 0          | *       | *     | 11        | 43,492      | 85.6    | 0.0   | 0               | 0         | *       |
| エネルギー設備      | 0    | 0         | *     | *     | 0     | 0          | *       | *     | 61        | 1,831,579   | 77.5    | 0.5   | 0               | 0         | *       |
| エネルギー支援      | 0    | 0         | *     | *     | 0     | 0          | *       | *     | 17        | 469,972     | 83.8    | 0.1   | 0               | 0         | *       |
| 29大雨         | 0    | 0         | *     | *     | 0     | 0          | *       | *     | 12        | 69,239      | 79.4    | 0.0   | 0               | 0         | *       |
| 県危機関連コロナ     | 0    | 0         | *     | *     | 0     | 0          | *       | *     | 1,287     | 22,762,933  | 87.7    | 6.6   | 11              | 154,337   | 571.9   |
| 国無利子         | 0    | 0         | *     | *     | 0     | 0          | *       | *     | 12,089    | 151,996,965 | 88.1    | 44.0  | 36              | 359,059   | 192.4   |
| 県無利子         | 0    | 0         | *     | *     | 0     | 0          | *       | *     | 1,092     | 19,953,860  | 88.8    | 5.8   | 5               | 73,115    | *       |
| パトタッチ        | 0    | 0         | *     | *     | 7     | 138,476    | 28.8    | 0.6   | 37        | 1,341,569   | 146.9   | 0.4   | 0               | 0         | *       |
| 県併走特別        | 7    | 136,939   | 171.2 | 3.3   | 15    | 214,826    | 241.6   | 1.0   | 26        | 356,168     | 400.6   | 0.1   | 0               | 0         | *       |
| 県改善サポート      | 0    | 0         | *     | *     | 2     | 46,767     | *       | 0.2   | 4         | 130,030     | *       | 0.0   | 0               | 0         | *       |
| 資金水準向上(特定社債) | 6    | 352,000   | *     | 8.5   | 10    | 504,000    | *       | 2.3   | 6         | 264,000     | *       | 0.1   | 0               | 0         | *       |
| 経営安定価格高騰控    | 3    | 110,000   | *     | 2.6   | 6     | 195,000    | *       | 0.9   | 5         | 154,332     | *       | 0.0   | 0               | 0         | *       |
| その他          | 0    | 0         | *     | *     | 0     | 0          | *       | *     | 0         | 0           | *       | 0.0   | 0               | 0         | *       |
| 県制度計         | 104  | 1,912,860 | 68.4  | 46.0  | 717   | 11,477,269 | 90.4    | 52.5  | 20,055    | 275,776,134 | 106.7   | 79.9  | 73              | 730,168   | 166.6   |
| 市町村制度計       | 202  | 1,381,940 | 138.1 | 33.2  | 866   | 5,448,216  | 126.5   | 24.9  | 8,061     | 35,128,937  | 94.1    | 10.2  | 23              | 113,009   | 122.6   |
| 商工貯蓄共済       | 0    | 0         | *     | *     | 0     | 0          | *       | *     | 0         | 0           | *       | 0.0   | 0               | 0         | *       |
| 合計           | 482  | 4,159,600 | 84.1  | 100.0 | 2,211 | 21,867,575 | 90.7    | 100.0 | 31,677    | 345,078,784 | 103.0   | 100.0 | 113             | 1,085,736 | 197.0   |

市町村制度別保証状況

(単位:千円,%)

|            | 保 証 承 諾 |           |         |       |           |           |         |       | 9月末保証債務残高 |            |       |       | 代 位 弁 済<br>(4年度累計) |         |         |
|------------|---------|-----------|---------|-------|-----------|-----------|---------|-------|-----------|------------|-------|-------|--------------------|---------|---------|
|            | 9 月 中   |           |         |       | 4 年 度 累 計 |           |         |       | 件数        | 金額         | 前年比   | 構成比   | 件数                 | 金額      | 前年比     |
|            | 件数      | 金額        | 前年比     | 構成比   | 件数        | 金額        | 前年比     | 構成比   |           |            |       |       |                    |         |         |
| 秋田市        | 25      | 258,150   | 118.7   | 18.7  | 101       | 1,117,267 | 137.2   | 20.5  | 843       | 6,173,165  | 92.5  | 17.6  | 1                  | 11,088  | 29.9    |
| 秋田市(設備)    | 3       | 34,210    | *       | 2.5   | 5         | 55,710    | 807.4   | 1.0   | 18        | 109,111    | 251.3 | 0.3   | 0                  | 0       | *       |
| 秋田市(空き店舗)  | 0       | 0         | *       | *     | 0         | 0         | *       | *     | 1         | 700        | 53.8  | 0.0   | 0                  | 0       | *       |
| 秋田市(創業)    | 4       | 20,300    | 43.0    | 1.5   | 27        | 130,458   | 97.6    | 2.4   | 144       | 680,278    | 126.7 | 1.9   | 0                  | 0       | *       |
| 秋田市(新分野)   | 0       | 0         | *       | *     | 0         | 0         | *       | *     | 2         | 6,518      | 204.1 | 0.0   | 0                  | 0       | *       |
| 秋田市(緊急)    | 0       | 0         | *       | *     | 0         | 0         | *       | *     | 25        | 384,314    | 84.4  | 1.1   | 0                  | 0       | *       |
| 秋田市小口      | 26      | 90,860    | 92.8    | 6.6   | 94        | 311,942   | 108.9   | 5.7   | 808       | 1,862,428  | 95.0  | 5.3   | 4                  | 6,377   | 476.3   |
| 秋田市中心空き店舗  | 0       | 0         | *       | *     | 1         | 40,000    | *       | 0.7   | 12        | 111,920    | 352.9 | 0.3   | 0                  | 0       | *       |
| 秋田市中心市街地設備 | 0       | 0         | *       | *     | 0         | 0         | *       | *     | 4         | 24,337     | 42.1  | 0.1   | 0                  | 0       | *       |
| 男鹿市        | 1       | 1,900     | 12.7    | 0.1   | 3         | 18,400    | 79.7    | 0.3   | 87        | 433,682    | 84.2  | 1.2   | 0                  | 0       | *       |
| 男小口        | 2       | 2,900     | 58.0    | 0.2   | 5         | 16,100    | 134.3   | 0.3   | 64        | 119,005    | 74.5  | 0.3   | 0                  | 0       | *       |
| 男創業        | 0       | 0         | *       | *     | 0         | 0         | *       | *     | 5         | 16,731     | 125.2 | 0.0   | 0                  | 0       | *       |
| 潟上市        | 0       | 0         | *       | *     | 5         | 49,700    | 108.0   | 0.9   | 69        | 382,449    | 92.9  | 1.1   | 0                  | 0       | *       |
| 潟上市小口      | 2       | 2,700     | 90.0    | 0.2   | 15        | 64,460    | 474.0   | 1.2   | 78        | 169,748    | 104.5 | 0.5   | 0                  | 0       | *       |
| 五城目町       | 3       | 20,000    | 666.7   | 1.4   | 4         | 26,000    | 224.6   | 0.5   | 22        | 58,667     | 128.0 | 0.2   | 0                  | 0       | *       |
| マル五小口      | 2       | 8,500     | 566.7   | 0.6   | 5         | 28,500    | 1,900.0 | 0.5   | 12        | 32,623     | 167.5 | 0.1   | 0                  | 0       | *       |
| 五創業        | 0       | 0         | *       | *     | 0         | 0         | *       | *     | 4         | 5,492      | 64.8  | 0.0   | 0                  | 0       | *       |
| 八郎潟町       | 1       | 10,000    | *       | 0.7   | 1         | 10,000    | 94.3    | 0.2   | 14        | 49,932     | 101.5 | 0.1   | 0                  | 0       | *       |
| マル八小口      | 0       | 0         | *       | *     | 1         | 5,000     | *       | 0.1   | 7         | 14,454     | 92.3  | 0.0   | 0                  | 0       | *       |
| 八創業        | 0       | 0         | *       | *     | 0         | 0         | *       | *     | 1         | 446        | 68.9  | 0.0   | 0                  | 0       | *       |
| 井川町        | 0       | 0         | *       | *     | 2         | 15,530    | *       | 0.3   | 4         | 22,054     | 169.1 | 0.1   | 0                  | 0       | *       |
| マル井小口      | 1       | 0         | *       | *     | 0         | 0         | *       | *     | 8         | 10,263     | 71.7  | 0.0   | 0                  | 0       | *       |
| 大潟村        | 1       | 5,000     | *       | 0.4   | 1         | 5,000     | *       | 0.1   | 4         | 16,734     | 118.3 | 0.0   | 0                  | 0       | *       |
| 潟小口        | 0       | 0         | *       | *     | 0         | 0         | *       | *     | 5         | 17,398     | 139.7 | 0.0   | 0                  | 0       | *       |
| 東西営業室管内計   | 70      | 454,520   | 111.4   | 32.9  | 270       | 1,894,067 | 138.0   | 34.8  | 2,241     | 10,702,447 | 95.4  | 30.5  | 5                  | 17,466  | 36.1    |
| 大館市        | 4       | 35,450    | 196.9   | 2.6   | 18        | 153,860   | 114.8   | 2.8   | 445       | 3,462,551  | 86.0  | 9.9   | 2                  | 5,399   | 109.1   |
| 大館市小口      | 3       | 9,000     | 2,368.4 | 0.7   | 19        | 69,100    | 202.3   | 1.3   | 200       | 285,715    | 90.4  | 0.8   | 0                  | 0       | *       |
| 大館市(機械)    | 0       | 0         | *       | *     | 2         | 4,100     | 306.0   | 0.1   | 27        | 27,152     | 70.3  | 0.1   | 0                  | 0       | *       |
| 大館市特別      | 0       | 0         | *       | *     | 0         | 0         | *       | *     | 294       | 2,038,308  | 88.0  | 5.8   | 0                  | 0       | *       |
| 大館市小口特別    | 0       | 0         | *       | *     | 0         | 0         | *       | *     | 15        | 42,510     | 87.1  | 0.1   | 0                  | 0       | *       |
| 大創業        | 2       | 7,500     | *       | 0.5   | 6         | 15,500    | 124.0   | 0.3   | 11        | 53,627     | 203.7 | 0.2   | 0                  | 0       | *       |
| 北秋田市       | 11      | 62,600    | 204.6   | 4.5   | 37        | 240,880   | 94.7    | 4.4   | 279       | 1,064,246  | 101.1 | 3.0   | 1                  | 5,774   | *       |
| 北秋田市特別     | 0       | 0         | *       | *     | 1         | 700       | 11.7    | 0.0   | 19        | 52,960     | 85.9  | 0.2   | 0                  | 0       | *       |
| 鹿角市        | 1       | 20,000    | 200.0   | 1.4   | 8         | 94,200    | 110.3   | 1.7   | 134       | 799,279    | 88.8  | 2.3   | 0                  | 0       | *       |
| 鹿小口        | 2       | 5,600     | 361.3   | 0.4   | 11        | 35,957    | 88.2    | 0.7   | 94        | 235,362    | 90.9  | 0.7   | 0                  | 0       | *       |
| 鹿創業        | 0       | 0         | *       | *     | 0         | 0         | *       | *     | 20        | 44,438     | 77.4  | 0.1   | 0                  | 0       | *       |
| 小坂町        | 0       | 0         | *       | *     | 1         | 10,000    | 1,000.0 | 0.2   | 19        | 55,555     | 89.6  | 0.2   | 0                  | 0       | *       |
| 小小阿仁村      | 0       | 0         | *       | *     | 3         | 9,400     | 783.3   | 0.2   | 13        | 39,777     | 90.8  | 0.1   | 0                  | 0       | *       |
| 大館支所管内計    | 23      | 140,150   | 221.7   | 10.1  | 106       | 633,697   | 108.8   | 11.6  | 1,570     | 8,201,480  | 89.1  | 23.3  | 3                  | 11,174  | 225.7   |
| 能代市        | 4       | 39,050    | 55.4    | 2.8   | 18        | 121,183   | 80.2    | 2.2   | 142       | 781,904    | 95.5  | 2.2   | 0                  | 0       | *       |
| 能小口        | 7       | 17,200    | 143.3   | 1.2   | 20        | 74,244    | 116.0   | 1.4   | 189       | 375,855    | 95.8  | 1.1   | 0                  | 0       | *       |
| 能創業        | 0       | 0         | *       | *     | 1         | 1,500     | 6.0     | 0.0   | 14        | 38,565     | 96.2  | 0.1   | 0                  | 0       | *       |
| 藤里町        | 0       | 0         | *       | *     | 0         | 0         | *       | *     | 5         | 15,707     | 53.4  | 0.0   | 0                  | 0       | *       |
| 藤小口        | 0       | 0         | *       | *     | 2         | 4,000     | *       | 0.1   | 16        | 27,865     | 87.3  | 0.1   | 0                  | 0       | *       |
| 藤創業        | 0       | 0         | *       | *     | 0         | 0         | *       | *     | 1         | 1,936      | 80.9  | 0.0   | 0                  | 0       | *       |
| 三種町        | 2       | 25,000    | 91.3    | 1.8   | 5         | 59,000    | 157.8   | 1.1   | 42        | 289,565    | 102.3 | 0.8   | 0                  | 0       | *       |
| 三小口        | 2       | 2,000     | 40.0    | 0.1   | 11        | 37,080    | 157.9   | 0.7   | 40        | 80,752     | 84.6  | 0.2   | 0                  | 0       | *       |
| 八峰町        | 0       | 0         | *       | *     | 2         | 19,820    | *       | 0.4   | 20        | 90,142     | 88.0  | 0.3   | 0                  | 0       | *       |
| ぶな小口       | 0       | 0         | *       | *     | 6         | 27,920    | 1,034.1 | 0.5   | 33        | 87,016     | 102.5 | 0.2   | 0                  | 0       | *       |
| マルぶな創業     | 0       | 0         | *       | *     | 0         | 0         | *       | *     | 2         | 4,303      | 89.6  | 0.0   | 0                  | 0       | *       |
| 能代支所管内計    | 15      | 83,250    | 72.5    | 6.0   | 65        | 344,747   | 112.8   | 6.3   | 504       | 1,793,609  | 95.1  | 5.1   | 0                  | 0       | *       |
| 由利本荘市      | 3       | 22,600    | 132.9   | 1.6   | 20        | 160,400   | 288.0   | 2.9   | 122       | 402,234    | 96.2  | 1.1   | 0                  | 0       | *       |
| 由利本荘小口     | 4       | 15,230    | 507.7   | 1.1   | 20        | 56,800    | 101.1   | 1.0   | 191       | 277,615    | 80.0  | 0.8   | 0                  | 0       | *       |
| 由利本荘特別     | 2       | 12,500    | 79.8    | 0.9   | 5         | 23,950    | 59.5    | 0.4   | 94        | 207,461    | 87.4  | 0.6   | 0                  | 0       | *       |
| 由利本荘市特別    | 1       | 20,000    | *       | 1.4   | 4         | 27,500    | 171.9   | 0.5   | 5         | 17,710     | 116.2 | 0.1   | 0                  | 0       | *       |
| 由利本荘市小口特別  | 3       | 11,370    | 43.1    | 0.8   | 30        | 100,670   | 78.2    | 1.8   | 328       | 800,501    | 113.0 | 2.3   | 3                  | 4,223   | *       |
| にかほ市       | 4       | 44,100    | 187.7   | 3.2   | 24        | 148,170   | 265.3   | 2.7   | 163       | 1,083,350  | 97.8  | 3.1   | 0                  | 0       | *       |
| に小口        | 2       | 5,500     | 37.0    | 0.4   | 10        | 46,130    | 91.6    | 0.8   | 119       | 306,797    | 104.7 | 0.9   | 0                  | 0       | *       |
| に創業        | 0       | 0         | *       | *     | 1         | 1,000     | *       | 0.0   | 13        | 31,780     | 118.9 | 0.1   | 0                  | 0       | *       |
| にかほ市特別     | 0       | 0         | *       | *     | 0         | 0         | *       | *     | 22        | 118,895    | 85.9  | 0.3   | 0                  | 0       | *       |
| 本荘支所管内計    | 19      | 131,300   | 130.7   | 9.5   | 114       | 564,420   | 136.7   | 10.4  | 1,057     | 3,246,342  | 98.6  | 9.2   | 3                  | 4,223   | 3,041.4 |
| 大仙市        | 10      | 87,000    | 140.7   | 6.3   | 30        | 324,680   | 118.8   | 6.0   | 336       | 2,248,367  | 92.0  | 6.4   | 1                  | 6,967   | 1,613.7 |
| 仙小口        | 5       | 16,820    | 130.8   | 1.2   | 28        | 94,380    | 152.7   | 1.7   | 248       | 462,883    | 87.9  | 1.3   | 0                  | 0       | *       |
| 仙創業        | 2       | 3,500     | 175.0   | 0.3   | 6         | 24,900    | 158.6   | 0.5   | 37        | 116,054    | 121.6 | 0.3   | 0                  | 0       | *       |
| 大仙市緊急      | 0       | 0         | *       | *     | 0         | 0         | *       | *     | 45        | 388,186    | 83.4  | 1.1   | 0                  | 0       | *       |
| 大仙市再興      | 0       | 0         | *       | *     | 0         | 0         | *       | *     | 433       | 875,276    | 97.7  | 2.5   | 0                  | 0       | *       |
| 仙北市        | 4       | 40,000    | 179.4   | 2.9   | 14        | 131,340   | 125.1   | 2.4   | 145       | 850,285    | 91.1  | 2.4   | 0                  | 0       | *       |
| 七小口        | 2       | 1,650     | 39.8    | 0.1   | 16        | 44,370    | 125.7   | 0.8   | 133       | 244,408    | 101.9 | 0.7   | 0                  | 0       | *       |
| 七創業        | 1       | 5,000     | 250.0   | 0.4   | 3         | 12,300    | 286.0   | 0.2   | 19        | 53,295     | 117.7 | 0.2   | 0                  | 0       | *       |
| 仙北市特別      | 0       | 0         | *       | *     | 0         | 0         | *       | *     | 31        | 258,243    | 93.1  | 0.7   | 0                  | 0       | *       |
| 美郷町        | 1       | 6,000     | 40.1    | 0.4   | 9         | 53,560    | 41.0    | 1.0   | 84        | 610,009    | 97.9  | 1.7   | 1                  | 9,835   | *       |
| 美小口        | 1       | 3,000     | 20.7    | 0.2   | 9         | 29,400    | 54.2    | 0.5   | 99        | 234,480    | 94.9  | 0.7   | 0                  | 0       | *       |
| 美創業        | 1       | 7,500     | *       | 0.5   | 2         | 9,500     | 413.0   | 0.2   | 10        | 30,584     | 102.7 | 0.1   | 0                  | 0       | *       |
| 美郷町特別      | 0       | 0         | *       | *     | 0         | 0         | *       | *     | 3         | 23,183     | 78.9  | 0.1   | 0                  | 0       | *       |
| 大曲支所管内計    | 27      | 170,470   | 116.6   | 12.3  | 117       | 724,430   | 84.9    | 13.3  | 1,623     | 6,395,250  | 93.3  | 18.2  | 2                  | 16,803  | 160.9   |
| 横手市        | 26      | 312,150   | 380.7   | 22.6  | 85        | 841,290   | 201.2   | 15.4  | 389       | 2,886,207  | 98.2  | 8.2   | 4                  | 31,092  | 305.0   |
| 横小口        | 10      | 27,600    | 201.5   | 2.0   | 59        | 188,850   | 157.7   | 3.5   | 340       | 610,067    | 101.6 | 1.7   | 0                  | 0       | *       |
| 横創業        | 4       | 10,500    | 59.0    | 0.8   | 6         | 14,000    | 55.3    | 0.3   | 40        | 127,375    | 120.0 | 0.4   | 0                  | 0       | *       |
| 湯沢市        | 2       | 12,000    | 28.6    | 0.9   | 17        | 108,715   | 71.1    | 2.0   | 119       | 757,062    | 85.4  | 2.2   | 6                  | 32,252  | *       |
| ゆ小口        | 4       | 27,000    | 215.5   | 2.0   | 19        | 65,900    | 116.0   | 1.2   | 151       | 317,476    | 105.0 | 0.9   | 0                  | 0       | *       |
| 羽後町        | 1       | 3,000     | *       | 0.2   | 6         | 57,100    | 1,903.3 | 1.0   | 14        | 67,762     | 378.9 | 0.2   | 0                  | 0       | *       |
| 東成瀬村       | 0       | 0         | *       | *     | 0         | 0         | *       | *     | 2         | 1,408      | 49.4  | 0.0   | 0                  | 0       | *       |
| 東小口        | 1       | 10,000    | *       | 0.7   | 2         | 11,000    | 183.3   | 0.2   | 11        | 22,453     | 137.8 | 0.1   | 0                  | 0       | *       |
| 横手湯沢支所管内計  | 48      | 402,250   | 239.4   | 29.1  | 194       | 1,286,855 | 164.6   | 23.6  | 1,066     | 4,789,809  | 98.3  | 13.6  | 10                 | 63,344  | 272.0   |
| 合 計        | 202     | 1,381,940 | 138.1   | 100.0 | 866       | 5,448,216 | 126.5   | 100.0 | 8,061     | 35,128,937 | 94.1  | 100.0 | 23                 | 113,009 | 122.6   |

セーフティネット保証状況

①金融機関別

(単位:千円, %)

|           | 保証承諾   |           |       |              |           |       | 保証承諾累計    |            |       |              |           |      |
|-----------|--------|-----------|-------|--------------|-----------|-------|-----------|------------|-------|--------------|-----------|------|
|           | 9月保証承諾 |           |       | 内セーフティネット保証分 |           |       | 4年度保証承諾累計 |            |       | 内セーフティネット保証分 |           |      |
|           | 件数     | 金額        | 構成比   | 件数           | 金額        | 構成比   | 件数        | 金額         | 構成比   | 件数           | 金額        | 構成比  |
| みずほ銀行     | 0      | 0         | *     | 0            | 0         | *     | 2         | 45,000     | 0.2   | 0            | 0         | *    |
| 三菱UFJ銀行   | 0      | 0         | *     | 0            | 0         | *     | 0         | 0          | *     | 0            | 0         | *    |
| (都市銀行計)   | 0      | 0         | *     | 0            | 0         | *     | 2         | 45,000     | 0.2   | 0            | 0         | *    |
| 秋田銀行      | 163    | 1,254,801 | 30.2  | 15           | 218,891   | 17.4  | 810       | 7,839,910  | 35.9  | 151          | 2,208,611 | 28.2 |
| 北都銀行      | 158    | 2,114,219 | 50.8  | 38           | 748,170   | 35.4  | 732       | 9,617,490  | 44.0  | 253          | 4,614,866 | 48.0 |
| 荘内銀行      | 0      | 0         | *     | 0            | 0         | *     | 0         | 0          | *     | 0            | 0         | *    |
| 青森銀行      | 1      | 15,000    | 0.4   | 1            | 15,000    | 100.0 | 7         | 77,000     | 0.4   | 1            | 15,000    | 19.5 |
| 山形銀行      | 1      | 1,450     | 0.0   | 1            | 1,450     | 100.0 | 2         | 4,450      | 0.0   | 1            | 1,450     | 32.6 |
| 東北銀行      | 0      | 0         | *     | 0            | 0         | *     | 6         | 58,900     | 0.3   | 2            | 16,000    | 27.2 |
| 七十七銀行     | 0      | 0         | *     | 0            | 0         | *     | 3         | 53,750     | 0.2   | 0            | 0         | *    |
| 岩手銀行      | 1      | 500       | 0.0   | 0            | 0         | *     | 2         | 30,500     | 0.1   | 0            | 0         | *    |
| みちのく銀行    | 2      | 5,500     | 0.1   | 0            | 0         | *     | 16        | 136,200    | 0.6   | 4            | 51,000    | 37.4 |
| (地方銀行計)   | 326    | 3,391,470 | 81.5  | 55           | 983,511   | 29.0  | 1,578     | 17,818,200 | 81.5  | 412          | 6,906,927 | 38.8 |
| 北日本銀行     | 2      | 17,000    | 0.4   | 0            | 0         | *     | 7         | 48,500     | 0.2   | 2            | 13,600    | 28.0 |
| きらやか銀行    | 6      | 61,000    | 1.5   | 0            | 0         | *     | 11        | 103,000    | 0.5   | 0            | 0         | *    |
| (第二地方銀行計) | 8      | 78,000    | 1.9   | 0            | 0         | *     | 18        | 151,500    | 0.7   | 2            | 13,600    | 9.0  |
| 秋田信用金庫    | 42     | 204,340   | 4.9   | 3            | 33,700    | 16.5  | 178       | 1,229,444  | 5.6   | 62           | 534,440   | 43.5 |
| 羽後信用金庫    | 70     | 320,120   | 7.7   | 2            | 31,370    | 9.8   | 269       | 1,508,921  | 6.9   | 23           | 266,170   | 17.6 |
| (信用金庫計)   | 112    | 524,460   | 12.6  | 5            | 65,070    | 12.4  | 447       | 2,738,365  | 12.5  | 85           | 800,610   | 29.2 |
| 秋田県信用組合   | 36     | 165,670   | 4.0   | 7            | 22,030    | 13.3  | 164       | 1,102,510  | 5.0   | 29           | 357,240   | 32.4 |
| あすか信用組合   | 0      | 0         | *     | 0            | 0         | *     | 0         | 0          | *     | 0            | 0         | *    |
| (信用組合計)   | 36     | 165,670   | 4.0   | 7            | 22,030    | 13.3  | 164       | 1,102,510  | 5.0   | 29           | 357,240   | 32.4 |
| 商工組合中央金庫  | 0      | 0         | *     | 0            | 0         | *     | 2         | 12,000     | 0.1   | 0            | 0         | *    |
| (その他計)    | 0      | 0         | *     | 0            | 0         | *     | 2         | 12,000     | 0.1   | 0            | 0         | *    |
| 合計        | 482    | 4,159,600 | 100.0 | 67           | 1,070,611 | 25.7  | 2,211     | 21,867,575 | 100.0 | 528          | 8,078,377 | 36.9 |

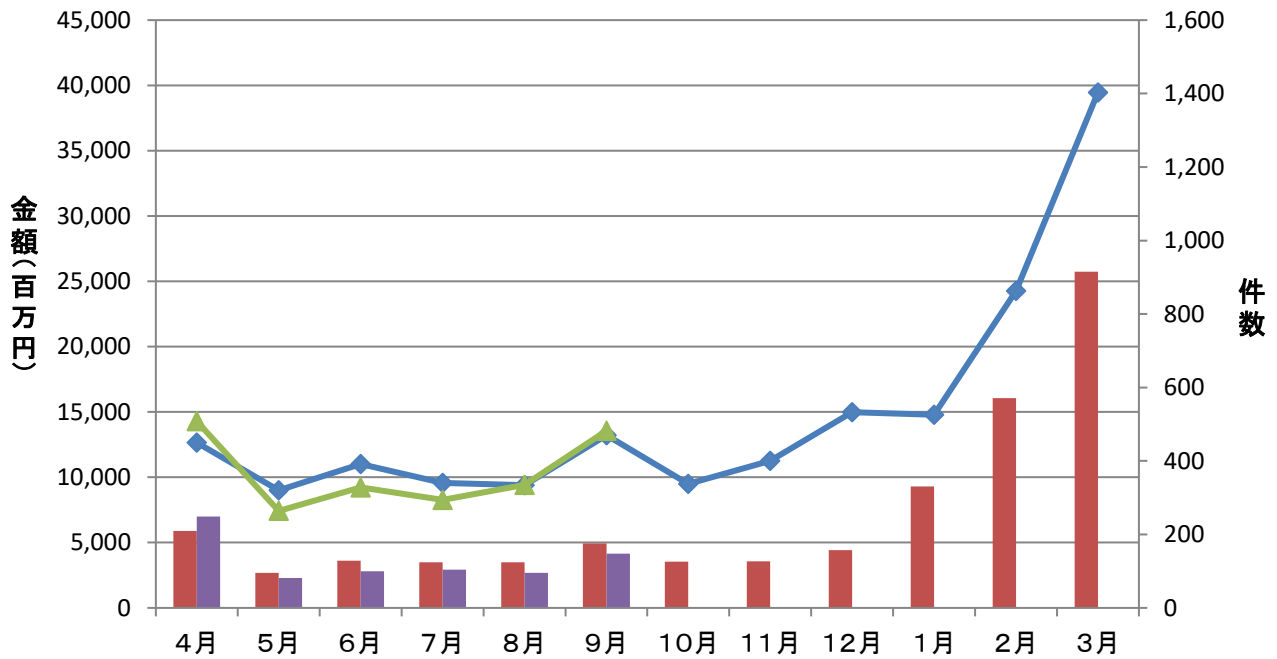
②市町村別

(単位:千円, %)

|       | 保証承諾   |           |       |              |           |      | 保証承諾累計    |            |       |              |           |      |
|-------|--------|-----------|-------|--------------|-----------|------|-----------|------------|-------|--------------|-----------|------|
|       | 9月保証承諾 |           |       | 内セーフティネット保証分 |           |      | 4年度保証承諾累計 |            |       | 内セーフティネット保証分 |           |      |
|       | 件数     | 金額        | 構成比   | 件数           | 金額        | 構成比  | 件数        | 金額         | 構成比   | 件数           | 金額        | 構成比  |
| 秋田市   | 136    | 1,163,502 | 28.0  | 22           | 308,612   | 26.5 | 675       | 7,362,218  | 33.7  | 186          | 2,829,595 | 38.4 |
| 能代市   | 19     | 80,350    | 1.9   | 0            | 0         | *    | 91        | 781,028    | 3.6   | 12           | 258,226   | 33.1 |
| 横手市   | 58     | 585,150   | 14.1  | 4            | 37,500    | 6.4  | 259       | 2,434,808  | 11.1  | 48           | 810,868   | 33.3 |
| 大館市   | 28     | 290,750   | 7.0   | 8            | 185,250   | 63.7 | 145       | 1,696,002  | 7.8   | 43           | 880,852   | 51.9 |
| 北秋田市  | 18     | 95,530    | 2.3   | 4            | 42,800    | 44.8 | 73        | 571,084    | 2.6   | 15           | 237,500   | 41.6 |
| 由利本荘市 | 57     | 413,329   | 9.9   | 8            | 112,820   | 27.3 | 194       | 1,587,949  | 7.3   | 51           | 437,620   | 27.6 |
| にかほ市  | 20     | 151,400   | 3.6   | 1            | 2,000     | 1.3  | 67        | 542,400    | 2.5   | 3            | 7,500     | 1.4  |
| 男鹿市   | 9      | 86,300    | 2.1   | 2            | 45,000    | 52.1 | 47        | 559,290    | 2.6   | 15           | 378,690   | 67.7 |
| 潟上市   | 13     | 160,629   | 3.9   | 5            | 65,929    | 41.0 | 72        | 639,027    | 2.9   | 18           | 185,729   | 29.1 |
| 湯沢市   | 22     | 148,500   | 3.6   | 1            | 20,000    | 13.5 | 115       | 1,203,052  | 5.5   | 22           | 315,970   | 26.3 |
| 大仙市   | 41     | 408,120   | 9.8   | 2            | 45,000    | 11.0 | 177       | 1,872,218  | 8.6   | 38           | 672,350   | 35.9 |
| 仙北市   | 16     | 143,650   | 3.5   | 4            | 55,000    | 38.3 | 63        | 467,510    | 2.1   | 15           | 175,500   | 37.5 |
| 鹿角市   | 8      | 55,500    | 1.3   | 2            | 22,000    | 39.6 | 61        | 524,257    | 2.4   | 17           | 241,700   | 46.1 |
| 13市計  | 445    | 3,782,710 | 90.9  | 63           | 941,911   | 24.9 | 2,039     | 20,240,843 | 92.6  | 483          | 7,432,100 | 36.7 |
| 小坂町   | 1      | 20,000    | 0.5   | 0            | 0         | *    | 4         | 50,948     | 0.2   | 2            | 20,948    | 41.1 |
| 鹿角郡計  | 1      | 20,000    | 0.5   | 0            | 0         | *    | 4         | 50,948     | 0.2   | 2            | 20,948    | 41.1 |
| 上小阿仁村 | 2      | 25,000    | 0.6   | 0            | 0         | *    | 10        | 83,400     | 0.4   | 2            | 34,000    | 40.8 |
| 北秋田郡計 | 2      | 25,000    | 0.6   | 0            | 0         | *    | 10        | 83,400     | 0.4   | 2            | 34,000    | 40.8 |
| 藤里町   | 1      | 3,000     | 0.1   | 0            | 0         | *    | 5         | 18,125     | 0.1   | 0            | 0         | *    |
| 三種町   | 5      | 37,000    | 0.9   | 0            | 0         | *    | 19        | 119,080    | 0.5   | 1            | 8,000     | 6.7  |
| 八峰町   | 1      | 2,000     | 0.0   | 0            | 0         | *    | 13        | 65,480     | 0.3   | 1            | 1,500     | 2.3  |
| 山本郡計  | 7      | 42,000    | 1.0   | 0            | 0         | *    | 37        | 202,685    | 0.9   | 2            | 9,500     | 4.7  |
| 五城目町  | 6      | 29,500    | 0.7   | 0            | 0         | *    | 16        | 89,000     | 0.4   | 5            | 28,500    | 32.0 |
| 八郎潟町  | 2      | 13,000    | 0.3   | 0            | 0         | *    | 6         | 30,560     | 0.1   | 2            | 11,060    | 36.2 |
| 井川町   | 2      | 15,700    | 0.4   | 1            | 12,700    | 80.9 | 14        | 83,370     | 0.4   | 5            | 23,700    | 28.4 |
| 大湯村   | 4      | 49,700    | 1.2   | 0            | 0         | *    | 7         | 179,200    | 0.8   | 0            | 0         | *    |
| 南秋田郡計 | 14     | 107,900   | 2.6   | 1            | 12,700    | 11.8 | 43        | 382,130    | 1.7   | 12           | 63,260    | 16.6 |
| 美郷町   | 5      | 43,000    | 1.0   | 1            | 30,000    | 69.8 | 29        | 162,410    | 0.7   | 3            | 39,500    | 24.3 |
| 仙北郡計  | 5      | 43,000    | 1.0   | 1            | 30,000    | 69.8 | 29        | 162,410    | 0.7   | 3            | 39,500    | 24.3 |
| 羽後町   | 2      | 9,000     | 0.2   | 1            | 6,000     | 66.7 | 35        | 479,900    | 2.2   | 20           | 289,300   | 60.3 |
| 東成瀬村  | 1      | 10,000    | 0.2   | 0            | 0         | *    | 3         | 12,500     | 0.1   | 0            | 0         | *    |
| 雄勝郡計  | 3      | 19,000    | 0.5   | 1            | 6,000     | 31.6 | 38        | 492,400    | 2.3   | 20           | 289,300   | 58.8 |
| 県外    | 5      | 119,990   | 2.9   | 1            | 80,000    | 66.7 | 11        | 252,759    | 1.2   | 4            | 189,769   | 75.1 |
| 合計    | 482    | 4,159,600 | 100.0 | 67           | 1,070,611 | 25.7 | 2,211     | 21,867,575 | 100.0 | 528          | 8,078,377 | 36.9 |

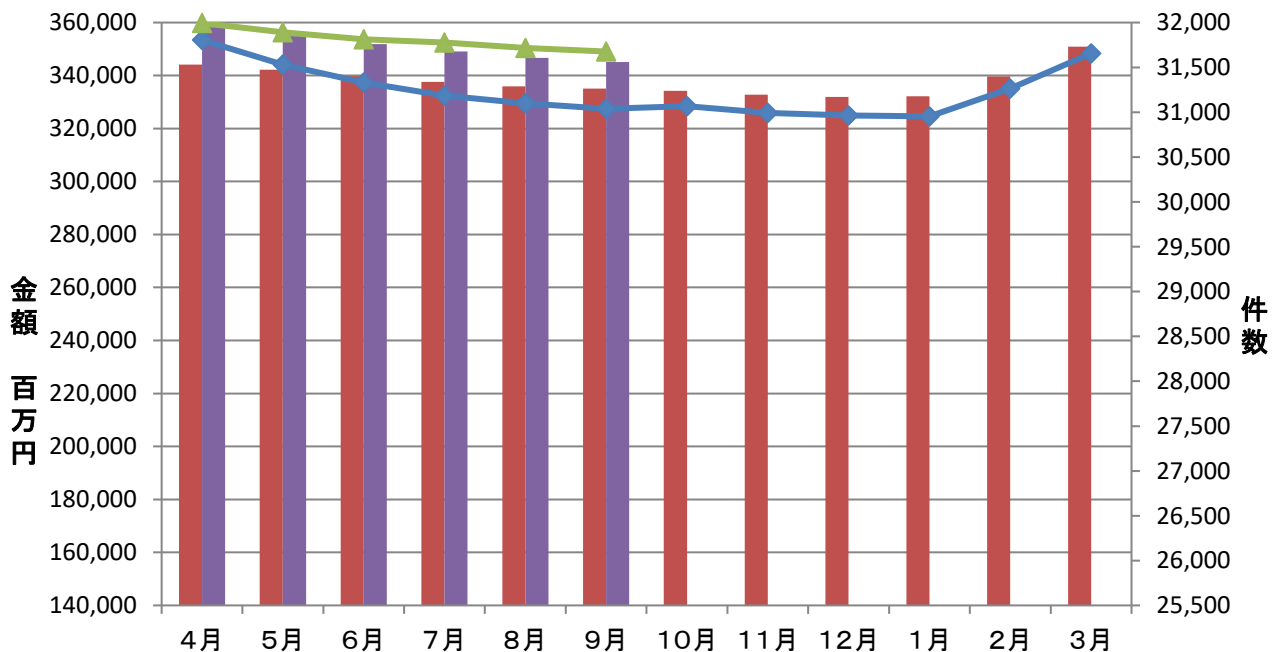
## 保証承諾実績

■ 令和3年度承諾金額 ■ 令和4年度承諾金額 ◆ 令和3年度承諾件数 ▲ 令和4年度承諾件数



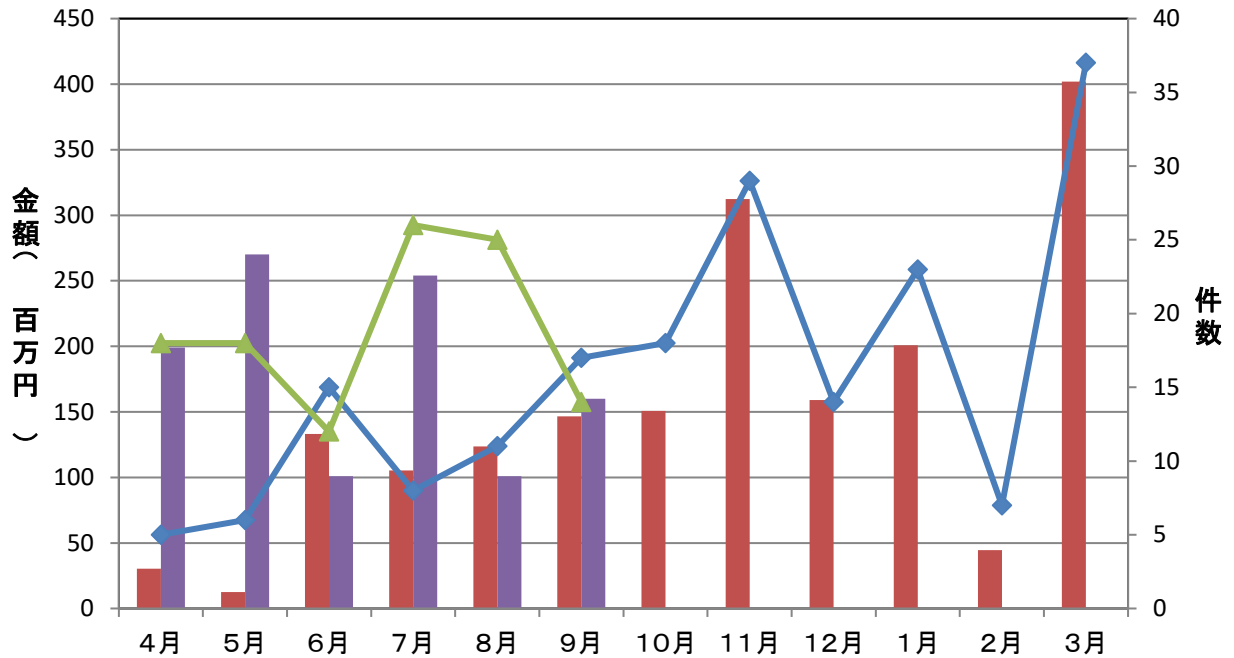
## 保証債務残高実績

■ 令和3年度残高金額 ■ 令和4年度残高金額 ◆ 令和3年度残高件数 ▲ 令和4年度残高件数



## 代位弁済実績

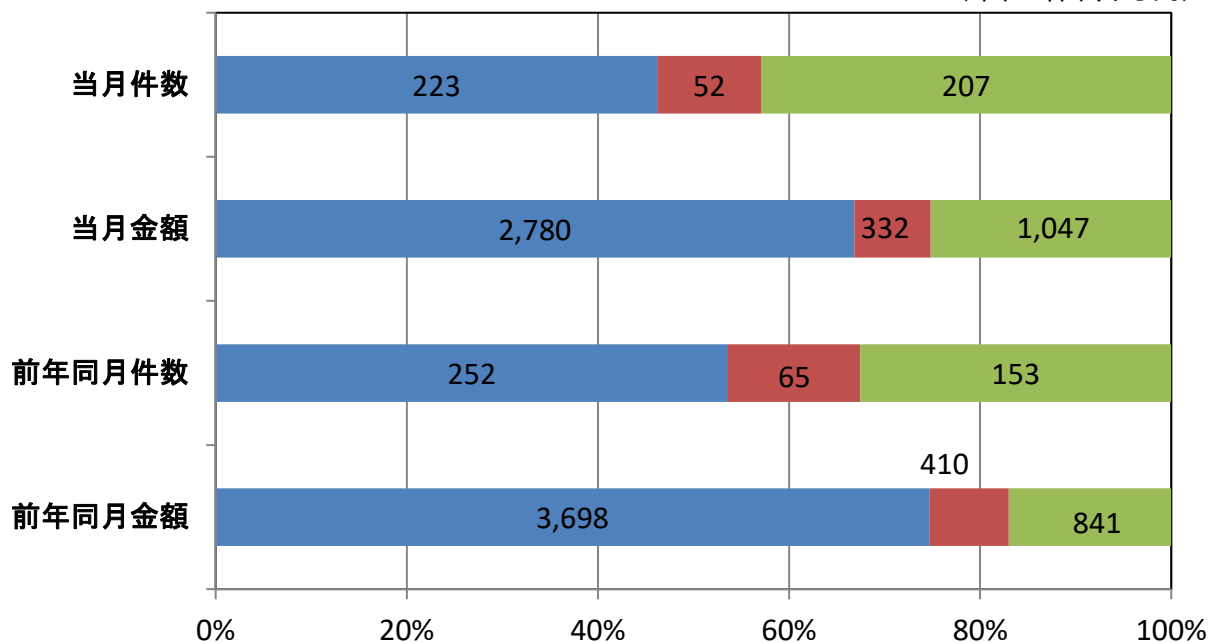
令和3年度代弁金額 令和4年度代弁金額 令和3年度代弁件数 令和4年度代弁件数



## 資金使途別保証承諾実績(当月)

運転資金 設備資金 運転設備資金

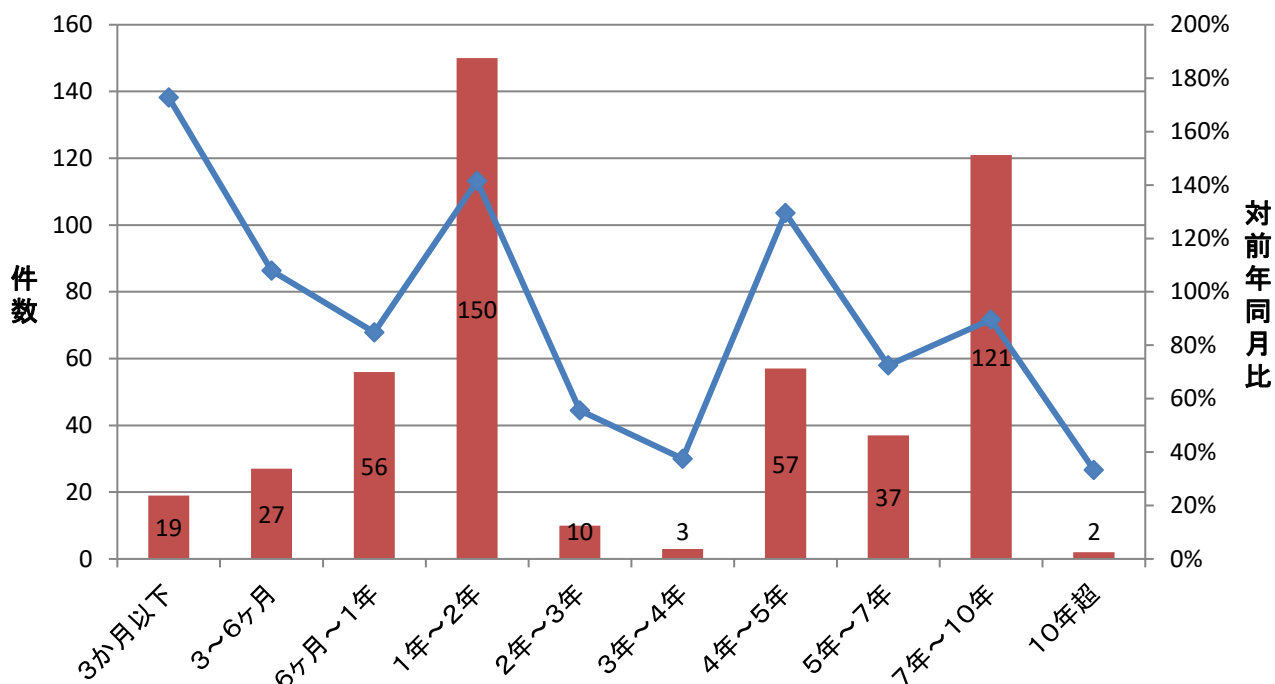
(単位:件、百万円)





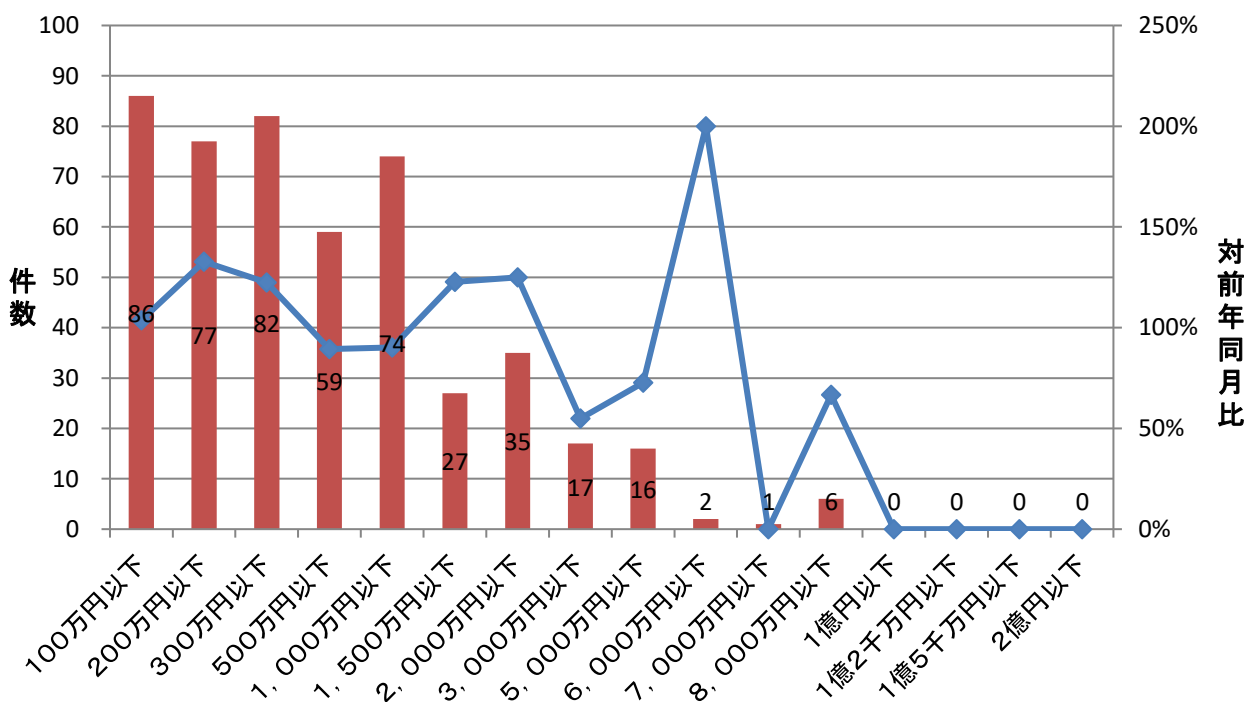
## 期間別保証承諾実績

■ 件数(当月) ◆ 対前年同月比



## 金額別保証承諾実績

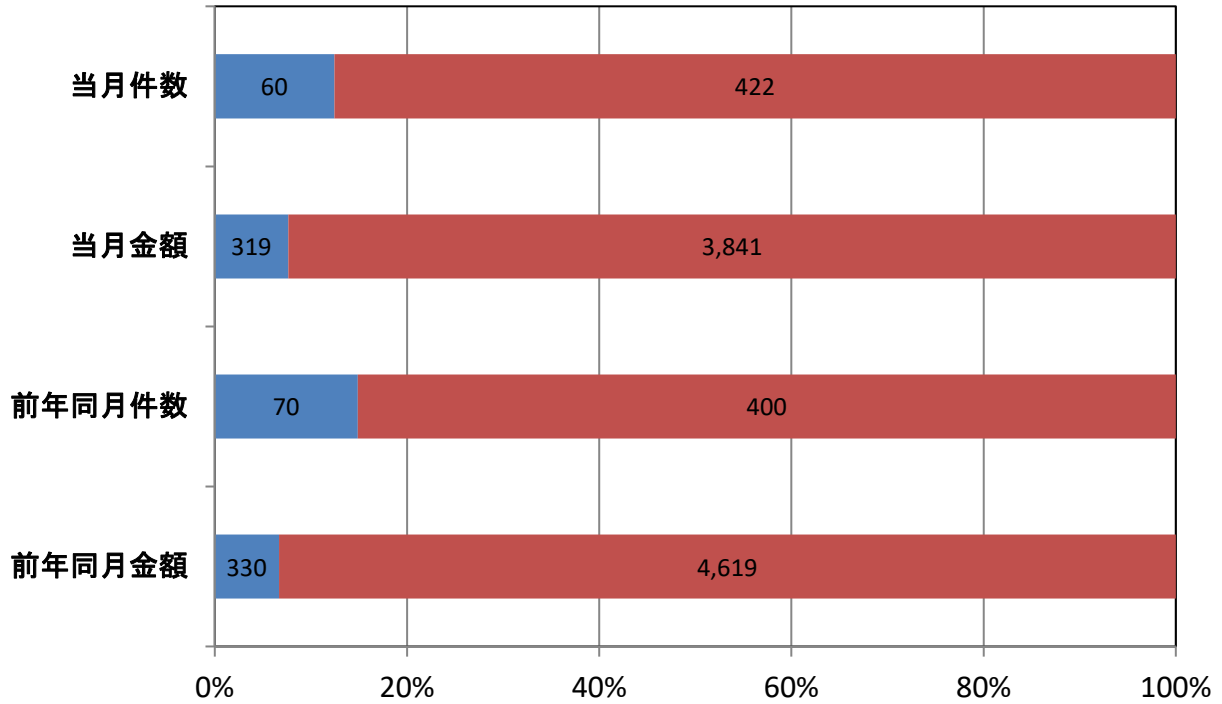
■ 件数(当月) ◆ 対前年同月比



## 新規・継続別保証承諾実績(当月)

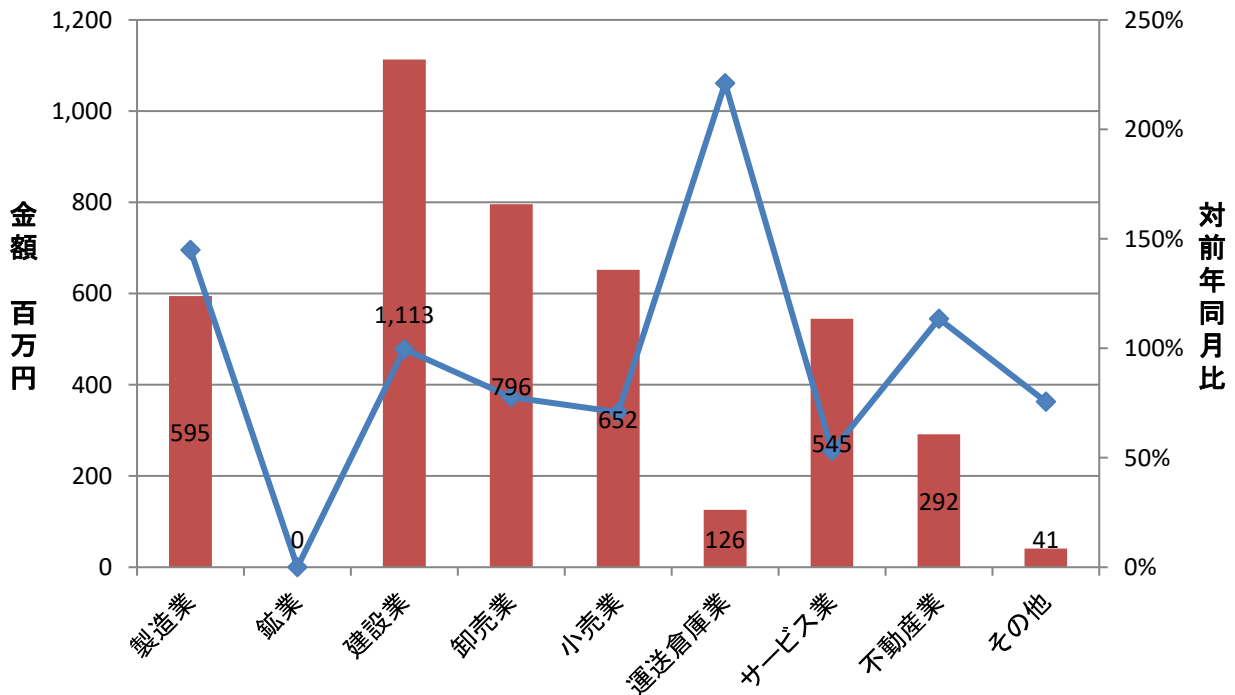
■ 新規 ■ 継続

(単位: 件、百万円)



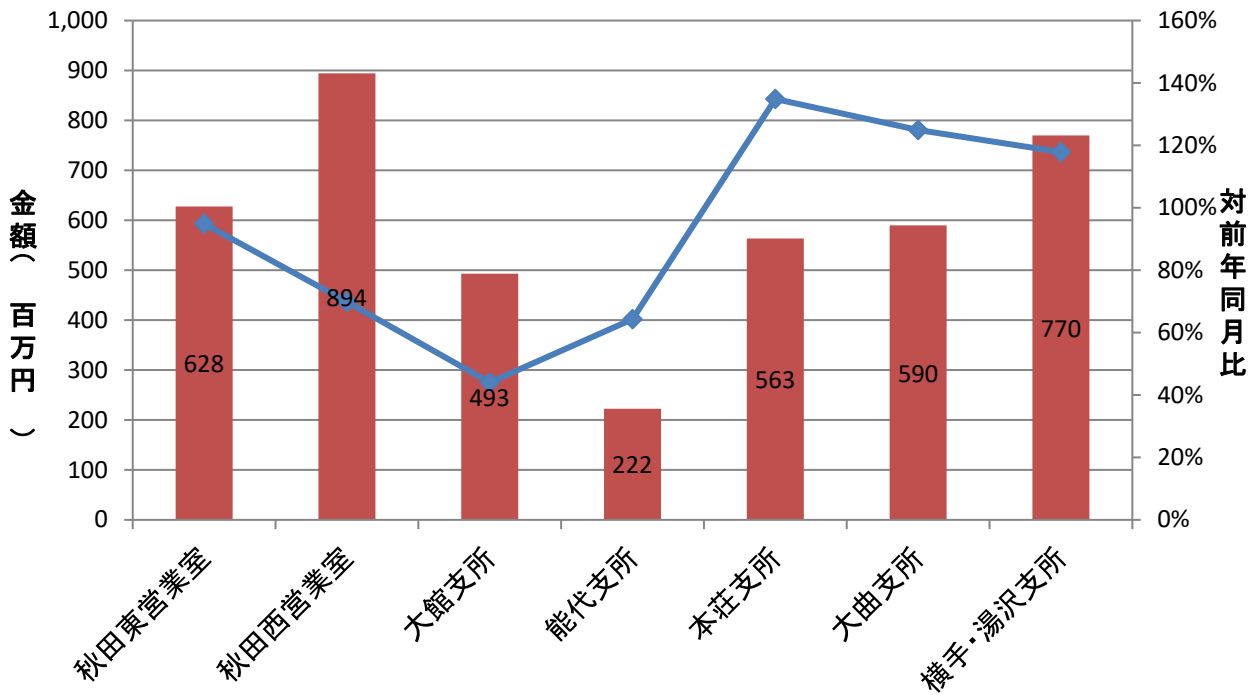
## 業種別保証承諾実績

■ 金額(当月) ◆ 対前年同月比

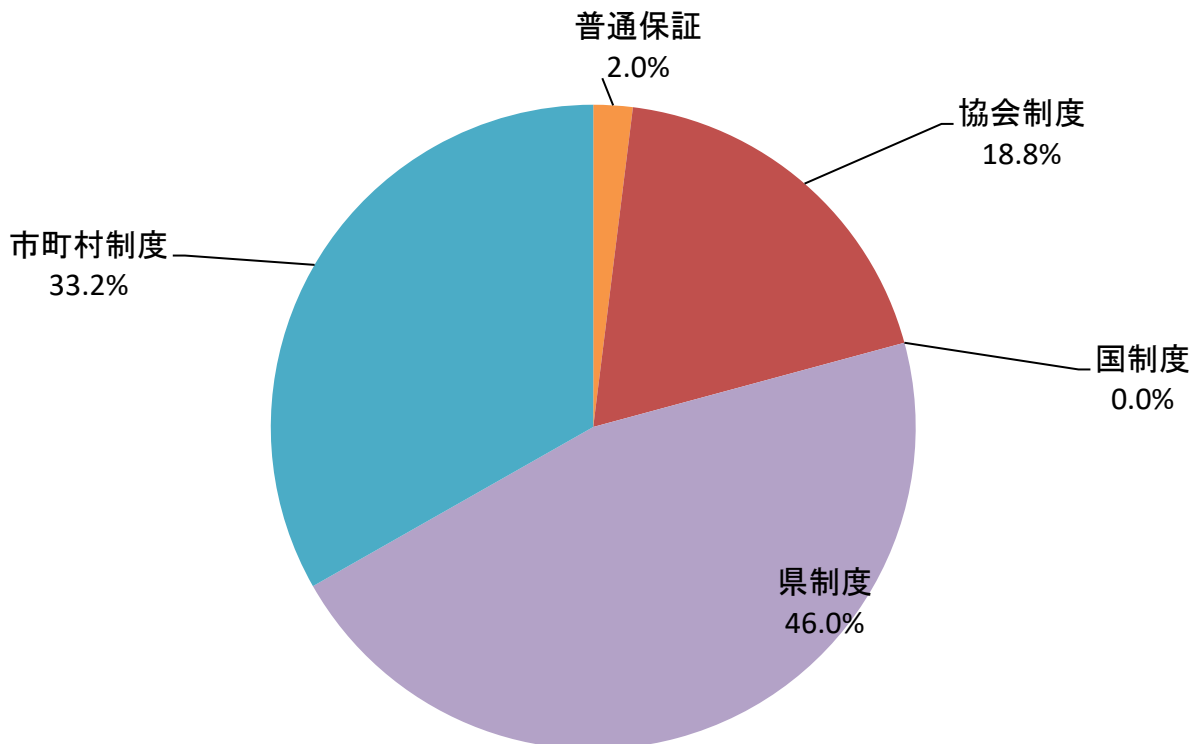


## 室・支所別保証承諾実績

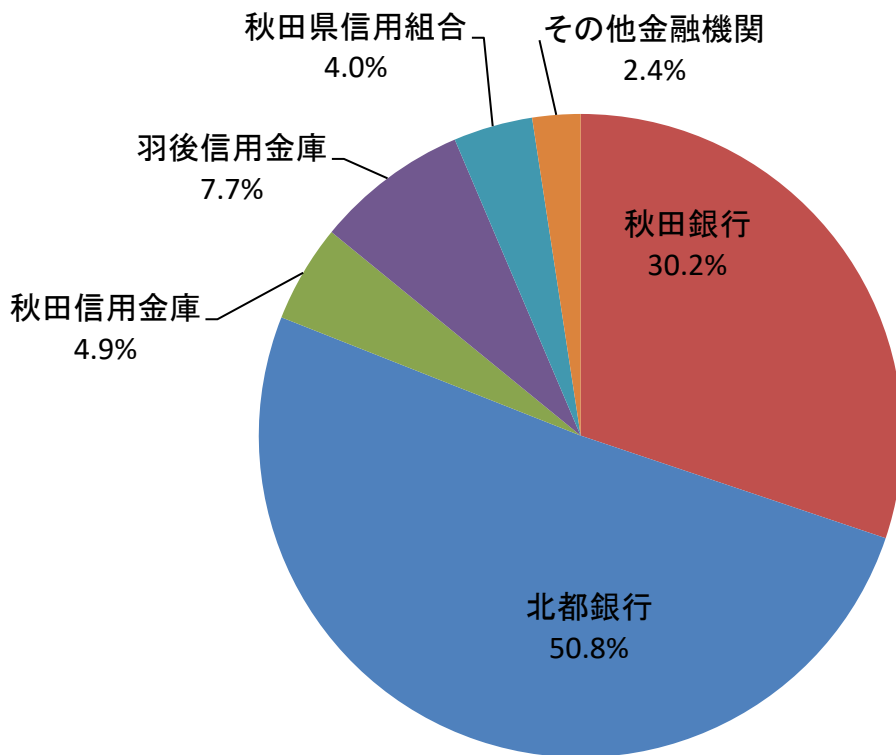
金額(当月)    対前年同月比



## 制度別保証金額割合(当月)



## 金融機関別保証承諾割合(当月)



## 創業者向け保証制度承諾実績

■ 令和3年度承諾金額 ■ 令和4年度承諾金額 ◆ 令和3年度承諾件数 ▲ 令和4年度承諾件数

